

Product datasheet

Anti-SCAP antibody ab125186

★★★★☆ 3 Abreviews
 [2 References](#)
 [2 Images](#)

Overview

Product name	Anti-SCAP antibody
Description	Rabbit polyclonal to SCAP
Host species	Rabbit
Tested applications	Suitable for: WB, IP
Species reactivity	Reacts with: Human Predicted to work with: Chimpanzee, Rhesus monkey, Orangutan
Immunogen	Synthetic peptide, corresponding to a region within amino acids 450-500 of Human SCAP (NP_036367.2).
Positive control	HeLa, Jurkat and 293T whole cell lysates
General notes	<p>Reproducibility is key to advancing scientific discovery and accelerating scientists' next breakthrough.</p> <p>Abcam is leading the way with our range of recombinant antibodies, knockout-validated antibodies and knockout cell lines, all of which support improved reproducibility.</p> <p>We are also planning to innovate the way in which we present recommended applications and species on our product datasheets, so that only applications & species that have been tested in our own labs, our suppliers or by selected trusted collaborators are covered by our Abpromise™ guarantee.</p> <p>In preparation for this, we have started to update the applications & species that this product is Abpromise guaranteed for.</p> <p>We are also updating the applications & species that this product has been “predicted to work with,” however this information is not covered by our Abpromise guarantee.</p> <p>Applications & species from publications and Abreviews that have not been tested in our own labs or in those of our suppliers are not covered by the Abpromise guarantee.</p> <p>Please check that this product meets your needs before purchasing. If you have any questions, special requirements or concerns, please send us an inquiry and/or contact our Support team ahead of purchase. Recommended alternatives for this product can be found below, as well as customer reviews and Q&As.</p>

Properties

Form	Liquid
-------------	--------

Storage instructions	Shipped at 4°C. Store at -20°C. The product can be stored for up to 12 months.
Storage buffer	pH: 7 Preservative: 0.09% Sodium azide Constituent: 99% Tris citrate/phosphate
	pH 7 to 8
Purity	Immunogen affinity purified
Clonality	Polyclonal
Isotype	IgG

Applications

Our [Abpromise guarantee](#) covers the use of **ab125186** in the following tested applications.

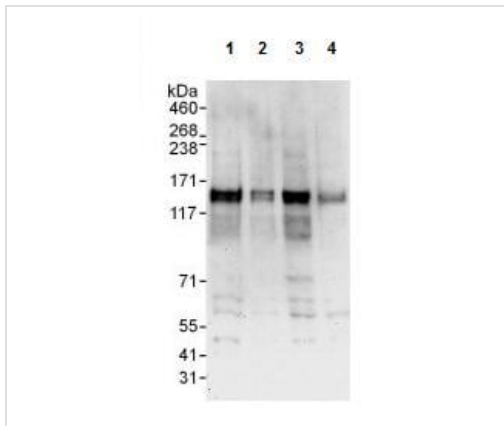
The application notes include recommended starting dilutions; optimal dilutions/concentrations should be determined by the end user.

Application	Abreviews	Notes
WB	★★★★☆	1/2000 - 1/10000. Predicted molecular weight: 140 kDa.
IP	★★★★☆	Use at 2-10 µg/mg of lysate.

Target

Function	Escort protein required for cholesterol as well as lipid homeostasis. Regulates export of the SCAP/SREBF complex from the ER upon low cholesterol. Formation of a ternary complex with INSIG at high sterol concentrations leads to masking of an ER-export signal in SCAP and retention of the complex in the ER. Low sterol concentrations trigger release of INSIG, a conformational change in the SSC domain of SCAP, unmasking of the ER export signal, recruitment into COPII-coated vesicles, transport to the Golgi complex, proteolytic cleavage of SREBF in the Golgi, release of the transcription factor fragment of SREBF from the membrane, its import into the nucleus and up-regulation of LDLR, INSIG1 and the mevalonate pathway.
Sequence similarities	Belongs to the WD repeat SCAP family. Contains 1 SSD (sterol-sensing) domain. Contains 7 WD repeats.
Domain	Cholesterol bound to SSC domain of SCAP or oxysterol bound to INSIG1/2 leads to masking of an ER export signal on SCAP possibly by moving the signal further away from the ER membrane.
Cellular localization	Endoplasmic reticulum membrane. Golgi apparatus membrane. Cytoplasmic vesicle > COPII-coated vesicle membrane. Moves from the endoplasmic reticulum to the Golgi in the absence of sterols.

Images



Western blot - Anti-SCAP antibody (ab125186)

All lanes : Anti-SCAP antibody (ab125186) at 0.1 µg/ml

Lane 1 : HeLa whole cell lysate at 50 µg

Lane 2 : HeLa whole cell lysate at 15 µg

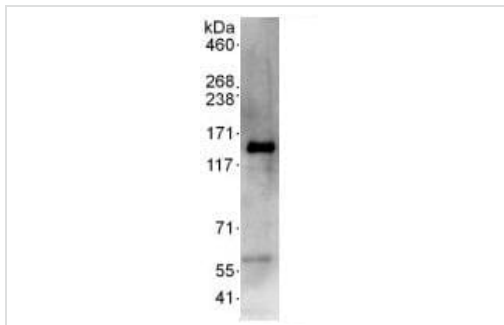
Lane 3 : 293T whole cell lysate at 50 µg

Lane 4 : Jurkat whole cell lysate at 50 µg

Developed using the ECL technique.

Predicted band size: 140 kDa

Exposure time: 30 seconds



Immunoprecipitation - Anti-SCAP antibody (ab125186)

ab125186, at 6 µg/mg lysate, detecting SCAP in HeLa cell lysate (1 mg of immunoprecipitate, 20% loaded in the lane) by Immunoprecipitation.

For the subsequent Western blot, ab125186 was used at 1 µg/ml.

The blot was developed using the ECL technique, with an exposure time of 30 seconds.

Please note: All products are "FOR RESEARCH USE ONLY. NOT FOR USE IN DIAGNOSTIC PROCEDURES"

Our Abpromise to you: Quality guaranteed and expert technical support

- Replacement or refund for products not performing as stated on the datasheet
- Valid for 12 months from date of delivery
- Response to your inquiry within 24 hours
- We provide support in Chinese, English, French, German, Japanese and Spanish
- Extensive multi-media technical resources to help you
- We investigate all quality concerns to ensure our products perform to the highest standards

If the product does not perform as described on this datasheet, we will offer a refund or replacement. For full details of the Abpromise, please visit <https://www.abcam.com/abpromise> or contact our technical team.

Terms and conditions

- Guarantee only valid for products bought direct from Abcam or one of our authorized distributors