


Product datasheet

Anti-SCD1 antibody ab111301

★★★★★ 1 Abreviews 1 References 2 Images

Overview

Product name	Anti-SCD1 antibody
Description	Goat polyclonal to SCD1
Host species	Goat
Tested applications	Suitable for: ELISA, IHC-P
Species reactivity	Reacts with: Human Predicted to work with: Mouse, Rat, Pig 
Immunogen	Synthetic peptide: RIKRTGDGNYKSG , corresponding to C terminal amino acids 347-359 of Human SCD (O00767). Run BLAST with Run BLAST with
Positive control	Human Colon and Liver tissue.

Properties

Form	Liquid
Storage instructions	Shipped at 4°C. Store at +4°C short term (1-2 weeks). Upon delivery aliquot. Store at -20°C long term.
Storage buffer	pH: 7.30 Preservative: 0.02% Sodium azide Constituents: Tris buffered saline, 0.5% BSA
Purity	Immunogen affinity purified
Clonality	Polyclonal
Isotype	IgG

Applications

Our [Abpromise guarantee](#) covers the use of **ab111301** in the following tested applications.

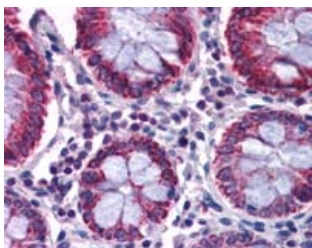
The application notes include recommended starting dilutions; optimal dilutions/concentrations should be determined by the end user.

Application	Abreviews	Notes
ELISA		1/64000.
IHC-P	★★★★☆	Use a concentration of 5 µg/ml.

Target

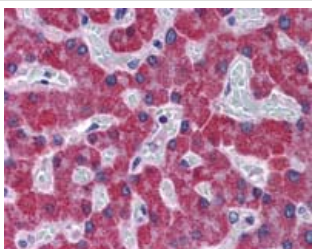
Function	Terminal component of the liver microsomal stearyl-CoA desaturase system, that utilizes O ₂ and electrons from reduced cytochrome b5 to catalyze the insertion of a double bond into a spectrum of fatty acyl-CoA substrates including palmitoyl-CoA and stearyl-CoA.
Sequence similarities	Belongs to the fatty acid desaturase family.
Domain	The histidine box domains may contain the active site and/or be involved in metal ion binding.
Cellular localization	Endoplasmic reticulum membrane.

Images



Immunohistochemistry Image of Human Colon tissue: Formalin Fixed, Paraffin Embedded (FFPE) and stained with ab111301 at 5µg/ml.

Immunohistochemistry (Formalin/PFA-fixed paraffin-embedded sections) - Anti-SCD1 antibody (ab111301)



Immunohistochemistry Image of Human Liver tissue: Formalin Fixed, Paraffin Embedded (FFPE) and stained with ab111301 at 5µg/ml.

Immunohistochemistry (Formalin/PFA-fixed paraffin-embedded sections) - Anti-SCD1 antibody (ab111301)

Please note: All products are "FOR RESEARCH USE ONLY. NOT FOR USE IN DIAGNOSTIC PROCEDURES"

Our Abpromise to you: Quality guaranteed and expert technical support

- Replacement or refund for products not performing as stated on the datasheet
- Valid for 12 months from date of delivery
- Response to your inquiry within 24 hours

- We provide support in Chinese, English, French, German, Japanese and Spanish
- Extensive multi-media technical resources to help you
- We investigate all quality concerns to ensure our products perform to the highest standards

If the product does not perform as described on this datasheet, we will offer a refund or replacement. For full details of the Abpromise, please visit <https://www.abcam.com/abpromise> or contact our technical team.

Terms and conditions

- Guarantee only valid for products bought direct from Abcam or one of our authorized distributors