

Product datasheet

Anti-SCGN/Secretagogin antibody [EPR7476] ab138493

Recombinant RabMAb

5 Images

Overview

<b>Product name</b>	Anti-SCGN/Secretagogin antibody [EPR7476]
<b>Description</b>	Rabbit monoclonal [EPR7476] to SCGN/Secretagogin
<b>Host species</b>	Rabbit
<b>Tested applications</b>	<b>Suitable for:</b> WB, IHC-P <b>Unsuitable for:</b> Flow Cyt, ICC/IF or IP
<b>Species reactivity</b>	<b>Reacts with:</b> Rat, Human
<b>Immunogen</b>	Synthetic peptide within Human SCGN/Secretagogin (N terminal). The exact sequence is proprietary.
<b>Positive control</b>	Fetal brain, fetal midbrain and C6 lysates; Human gastric neuroendocrine carcinoma and pancreas carcinoma tissues
<b>General notes</b>	Mouse: We have preliminary internal testing data to indicate this antibody may not react with this species. Please contact us for more information.

This product was previously labelled as SCGN

This product is a recombinant monoclonal antibody, which offers several advantages including:

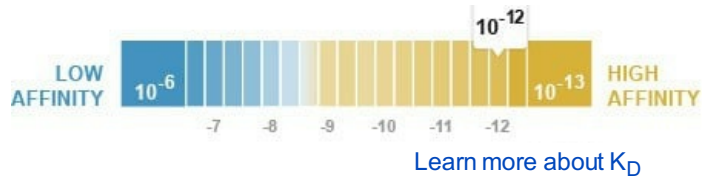
- High batch-to-batch consistency and reproducibility
- Improved sensitivity and specificity
- Long-term security of supply
- Animal-free production

For more information [see here](#).

Our RabMAb<sup>®</sup> technology is a patented hybridoma-based technology for making rabbit monoclonal antibodies. For details on our patents, please refer to [RabMAb<sup>®</sup> patents](#).

Properties

<b>Form</b>	Liquid
<b>Storage instructions</b>	Shipped at 4°C. Store at -20°C.
<b>Dissociation constant (K<sub>D</sub>)</b>	K <sub>D</sub> = 8.10 x 10 <sup>-12</sup> M



<b>Storage buffer</b>	pH: 7.2 Preservative: 0.01% Sodium azide Constituents: 9% PBS, 40% Glycerol (glycerin, glycerine), 0.05% BSA, 50% Tissue culture supernatant
<b>Purity</b>	Tissue culture supernatant
<b>Clonality</b>	Monoclonal
<b>Clone number</b>	EPR7476
<b>Isotype</b>	IgG

### Applications

**The Abpromise guarantee** Our [Abpromise guarantee](#) covers the use of ab138493 in the following tested applications. The application notes include recommended starting dilutions; optimal dilutions/concentrations should be determined by the end user.

Application	Abreviews	Notes
WB		1/1000 - 1/10000. Predicted molecular weight: 32 kDa.
IHC-P		1/250 - 1/500. Perform heat mediated antigen retrieval with citrate buffer pH 6 before commencing with IHC staining protocol.

**Application notes** Is unsuitable for Flow Cyt, ICC/IF or IP.

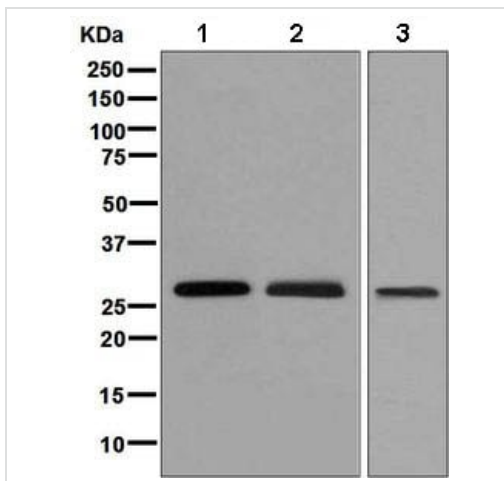
### Target

**Tissue specificity** Expressed at high levels in the pancreatic islets of Langerhans and to a much lesser extent in the gastrointestinal tract (stomach, small intestine and colon), the adrenal medulla and cortex and the thyroid C-cells. In the brain, the expression is restricted to distinct subtypes of neurons with highest expression in the molecular layer of the cerebellum (stellate and basket cells), in the anterior part of the pituitary gland, in the thalamus, in the hypothalamus and in a subgroup of neocortical neurons.

**Sequence similarities** Contains 6 EF-hand domains.

**Cellular localization** Cytoplasm. Secreted. Cytoplasmic vesicle > secretory vesicle membrane. Predominantly cytoplasmic. A small proportion is associated with secretory granules and membrane fractions (By similarity). Detectable in human serum after ischemic neuronal damage.

### Images



Western blot - Anti-SCGN/Secretagogen antibody [EPR7476] (ab138493)

**All lanes** : Anti-SCGN/Secretagogen antibody [EPR7476] (ab138493) at 1/1000 dilution

**Lane 1** : Fetal brain lysate

**Lane 2** : Fetal midbrain lysate

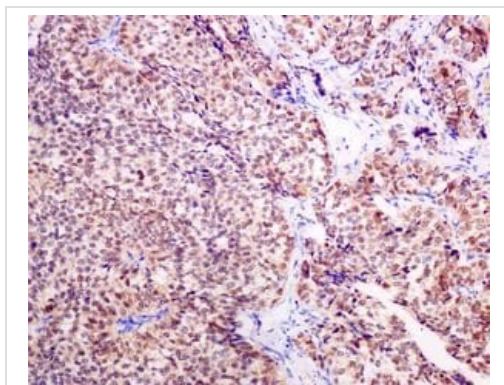
**Lane 3** : C6 lysate

Lysates/proteins at 10 µg per lane.

**Secondary**

**All lanes** : HRP labelled goat anti-rabbit at 1/2000 dilution

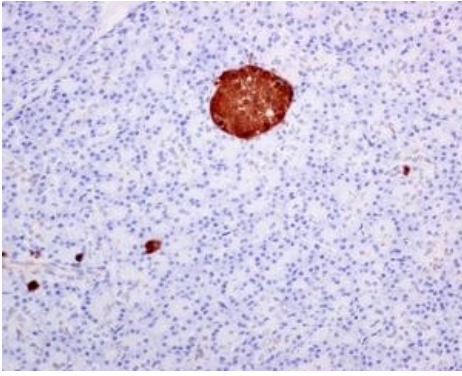
**Predicted band size:** 32 kDa



Immunohistochemistry (Formalin/PFA-fixed paraffin-embedded sections) - Anti-SCGN/Secretagogen antibody [EPR7476] (ab138493)

Immunohistochemical analysis of paraffin-embedded Human gastric neuroendocrine carcinoma tissue labelling SCGN/Secretagogen with ab138493 at 1/250 dilution.

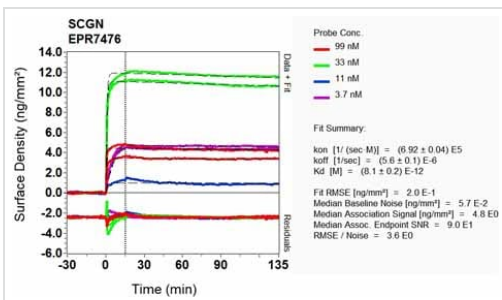
Perform heat mediated antigen retrieval with citrate buffer pH 6 before commencing with IHC staining protocol.



Immunohistochemistry (Formalin/PFA-fixed paraffin-embedded sections) - Anti-SCGN/Secretagoin antibody [EPR7476] (ab138493)

Immunohistochemical analysis of paraffin-embedded Human pancreas carcinoma tissue labelling SCGN/Secretagoin with ab138493 at 1/250 dilution.

Perform heat mediated antigen retrieval with citrate buffer pH 6 before commencing with IHC staining protocol.



SPR Scanning - Anti-SCGN/Secretagoin antibody [EPR7476] (ab138493)

Equilibrium dissociation constant ( $K_D$ )

Learn more about  $K_D$

[Click here to learn more about  \$K\_D\$](#)

Why choose a recombinant antibody?

- Research with confidence**  
Consistent and reproducible results
- Long-term and scalable supply**  
Recombinant technology
- Success from the first experiment**  
Confirmed specificity
- Ethical standards compliant**  
Animal-free production

Anti-SCGN/Secretagoin antibody [EPR7476] (ab138493)

**Please note:** All products are "FOR RESEARCH USE ONLY. NOT FOR USE IN DIAGNOSTIC PROCEDURES"

**Our Abpromise to you: Quality guaranteed and expert technical support**

- Replacement or refund for products not performing as stated on the datasheet
- Valid for 12 months from date of delivery
- Response to your inquiry within 24 hours
  
- We provide support in Chinese, English, French, German, Japanese and Spanish
- Extensive multi-media technical resources to help you
- We investigate all quality concerns to ensure our products perform to the highest standards

If the product does not perform as described on this datasheet, we will offer a refund or replacement. For full details of the Abpromise, please visit <https://www.abcam.com/abpromise> or contact our technical team.

### **Terms and conditions**

---

- Guarantee only valid for products bought direct from Abcam or one of our authorized distributors