




Product datasheet

Anti-SCNN1B antibody [7B8] - C-terminal ab241050

[2 Images](#)

Overview

Product name	Anti-SCNN1B antibody [7B8] - C-terminal
Description	Mouse monoclonal [7B8] to SCNN1B - C-terminal
Host species	Mouse
Tested applications	Suitable for: WB, IHC-P
Species reactivity	<p>Reacts with: Mouse</p> <p>Predicted to work with: Rat </p>
Immunogen	<p>Synthetic peptide corresponding to Rat SCNN1B aa 617-638 (C terminal). NP_036780 Sequence:</p> <p>NYDSLRLQPLDTMESDSEVEAI</p> <p>Database link: P37090</p> <p style="text-align: right;">  Run BLAST with  Run BLAST with </p>
Positive control	IHC-P: Mouse kidney cortex tissue. WB: Mouse kidney homogenates.
General notes	<p>Reproducibility is key to advancing scientific discovery and accelerating scientists' next breakthrough.</p> <p>Abcam is leading the way with our range of recombinant antibodies, knockout-validated antibodies and knockout cell lines, all of which support improved reproducibility.</p> <p>We are also planning to innovate the way in which we present recommended applications and species on our product datasheets, so that only applications & species that have been tested in our own labs, our suppliers or by selected trusted collaborators are covered by our Abpromise™ guarantee.</p> <p>In preparation for this, we have started to update the applications & species that this product is Abpromise guaranteed for.</p> <p>We are also updating the applications & species that this product has been “predicted to work with,” however this information is not covered by our Abpromise guarantee.</p> <p>Applications & species from publications and Abreviews that have not been tested in our own labs or in those of our suppliers are not covered by the Abpromise guarantee.</p> <p>Please check that this product meets your needs before purchasing. If you have any questions, special requirements or concerns, please send us an inquiry and/or contact our Support team ahead of purchase. Recommended alternatives for this product can be found below, as well as customer reviews and Q&As.</p>

Properties

Form	Liquid
Storage instructions	Shipped at 4°C. Store at +4°C short term (1-2 weeks). Upon delivery aliquot. Store at -20°C long term. Avoid freeze / thaw cycle.
Storage buffer	Preservative: 0.09% Sodium azide Constituents: PBS, 50% Glycerol (glycerin, glycerine)
Purity	Protein G purified
Purification notes	Purified from TCS.
Clonality	Monoclonal
Clone number	7B8
Isotype	IgG1

Applications

Our [Abpromise guarantee](#) covers the use of **ab241050** in the following tested applications.

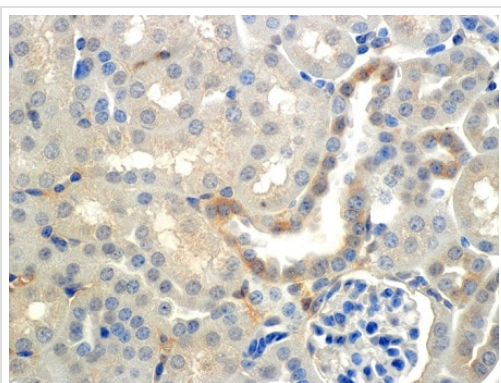
The application notes include recommended starting dilutions; optimal dilutions/concentrations should be determined by the end user.

Application	Abreviews	Notes
WB		1/1000. Predicted molecular weight: 73 kDa.
IHC-P		1/50.

Target

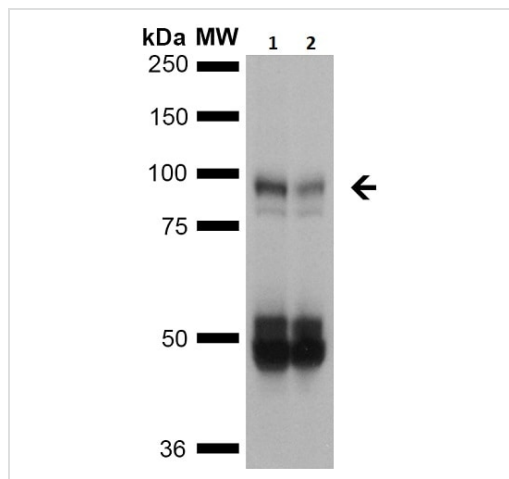
Function	Sodium permeable non-voltage-sensitive ion channel inhibited by the diuretic amiloride. Mediates the electrodiffusion of the luminal sodium (and water, which follows osmotically) through the apical membrane of epithelial cells. Controls the reabsorption of sodium in kidney, colon, lung and sweat glands. Also plays a role in taste perception.
Involvement in disease	Pseudohypoaldosteronism 1, autosomal recessive Liddle syndrome Bronchiectasis with or without elevated sweat chloride 1
Sequence similarities	Belongs to the amiloride-sensitive sodium channel (TC 1.A.6) family. SCNN1B subfamily.
Post-translational modifications	Phosphorylated on serine and threonine residues.
Cellular localization	Apical cell membrane. Apical membrane of epithelial cells.

Images



Immunohistochemistry (Formalin/PFA-fixed paraffin-embedded sections) - Anti-SCNN1B antibody [7B8] - C-terminal (ab241050)

Formalin-fixed, paraffin-embedded mouse kidney cortex tissue stained for SCNN1B with ab241050 at 1/150 dilution in immunohistochemical analysis.



Western blot - Anti-SCNN1B antibody [7B8] - C-terminal (ab241050)

All lanes : Anti-SCNN1B antibody [7B8] - C-terminal (ab241050) at 1/1000 dilution

Lane 1 : Mouse kidney homogenates from a mouse on a low-salt diet

Lane 2 : Mouse kidney homogenates from a mouse on a normal salt diet

Lysates/proteins at 20 µg per lane.

Predicted band size: 73 kDa

Please note: All products are "FOR RESEARCH USE ONLY. NOT FOR USE IN DIAGNOSTIC PROCEDURES"

Our Abpromise to you: Quality guaranteed and expert technical support

- Replacement or refund for products not performing as stated on the datasheet
- Valid for 12 months from date of delivery
- Response to your inquiry within 24 hours
- We provide support in Chinese, English, French, German, Japanese and Spanish
- Extensive multi-media technical resources to help you
- We investigate all quality concerns to ensure our products perform to the highest standards

If the product does not perform as described on this datasheet, we will offer a refund or replacement. For full details of the Abpromise, please visit <https://www.abcam.com/abpromise> or contact our technical team.

Terms and conditions

- Guarantee only valid for products bought direct from Abcam or one of our authorized distributors