


Product datasheet

Anti-SCP3 antibody ab235254

3 Images

Overview

Product name	Anti-SCP3 antibody
Description	Rabbit polyclonal to SCP3
Host species	Rabbit
Tested applications	Suitable for: WB, IHC-P
Species reactivity	Reacts with: Mouse Predicted to work with: Rat 
Immunogen	Synthetic peptide. This information is considered to be commercially sensitive.
Positive control	WB: Mouse testis whole tissue lysate. IHC-P: Mouse testis tissue.
General notes	<p>Reproducibility is key to advancing scientific discovery and accelerating scientists' next breakthrough.</p> <p>Abcam is leading the way with our range of recombinant antibodies, knockout-validated antibodies and knockout cell lines, all of which support improved reproducibility.</p> <p>We are also planning to innovate the way in which we present recommended applications and species on our product datasheets, so that only applications & species that have been tested in our own labs, our suppliers or by selected trusted collaborators are covered by our Abpromise™ guarantee.</p> <p>In preparation for this, we have started to update the applications & species that this product is Abpromise guaranteed for.</p> <p>We are also updating the applications & species that this product has been “predicted to work with,” however this information is not covered by our Abpromise guarantee.</p> <p>Applications & species from publications and Abreviews that have not been tested in our own labs or in those of our suppliers are not covered by the Abpromise guarantee.</p> <p>Please check that this product meets your needs before purchasing. If you have any questions, special requirements or concerns, please send us an inquiry and/or contact our Support team ahead of purchase. Recommended alternatives for this product can be found below, as well as customer reviews and Q&As.</p>

Properties

Form	Liquid
-------------	--------

Storage instructions	Shipped at 4°C. Store at +4°C short term (1-2 weeks). Upon delivery aliquot. Store at -20°C long term. Avoid freeze / thaw cycle.
Storage buffer	Preservative: 0.01% Sodium azide Constituent: PBS
Purity	Affinity purified
Clonality	Polyclonal
Isotype	IgG

Applications

Our [Abpromise guarantee](#) covers the use of **ab235254** in the following tested applications.

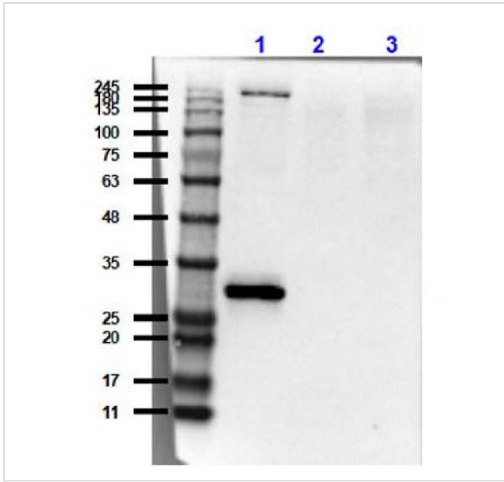
The application notes include recommended starting dilutions; optimal dilutions/concentrations should be determined by the end user.

Application	Abreviews	Notes
WB		Use a concentration of 5 µg/ml. Predicted molecular weight: 28 kDa.
IHC-P		1/100. Perform heat mediated antigen retrieval with citrate buffer pH 6 before commencing with IHC staining protocol.

Target

Function	Component of the transverse filaments of synaptonemal complexes (SCS), formed between homologous chromosomes during meiotic prophase. Has an essential meiotic function in spermatogenesis. May be important for testis development.
Tissue specificity	Testis-specific.
Involvement in disease	Defects in SYCP3 are a cause of azoospermia due to perturbations of meiosis (AZSPM) [MIM:270960]. AZSPM is a condition of having no sperm present in the ejaculate. Testicular histology shows arrest of spermatogenesis at the pachytene stage of primary spermatocytes.
Sequence similarities	Belongs to the XLR/SYCP3 family.
Cellular localization	Nucleus. In tripartite segments of synaptonemal complexes, irrespective of whether these are synapsed or unsynapsed.

Images



Western blot - Anti-SCP3 antibody (ab235254)

All lanes : Anti-SCP3 antibody (ab235254) at 5 µg/ml

Lane 1 : Mouse testis whole tissue lysate

Lane 2 : Human testis whole tissue lysate

Lane 3 : NIH/3T3 (Mouse embryo fibroblast cell line) whole cell lysate

Lysates/proteins at 35 µg per lane.

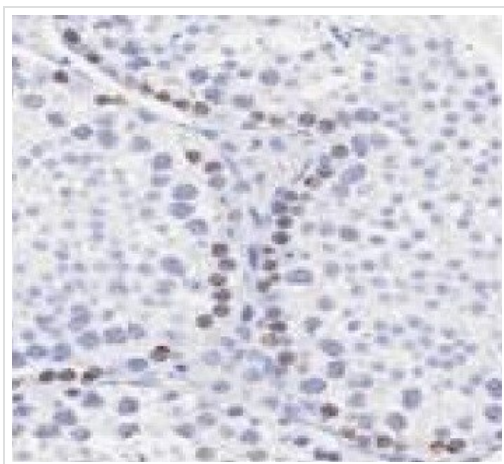
Secondary

All lanes : Goat anti-Rabbit IgG at 1/70000 dilution

Predicted band size: 28 kDa

Exposure time: 30 seconds

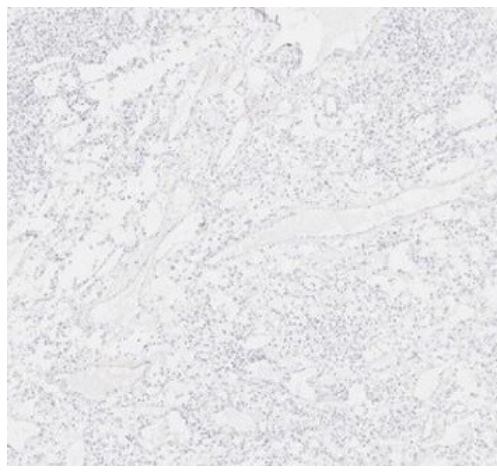
Blocking buffer: 5% BLOTTO.



Immunohistochemistry (Formalin/PFA-fixed paraffin-embedded sections) - Anti-SCP3 antibody (ab235254)

Immunohistochemistry analysis of formalin/PFA-fixed paraffin-embedded mouse testis tissue sections labeling SCP3 with ab235254 at a 1/100 dilution (30mins at RT), followed by a ready to use anti-Rabbit poly-HRP-IgG secondary (8mins at RT).

Counterstained with hematoxylin.



Immunohistochemistry (Formalin/PFA-fixed paraffin-embedded sections) - Anti-SCP3 antibody (ab235254)

Negative control: Immunohistochemistry analysis of formalin/PFA-fixed paraffin-embedded human kidney tissue sections labeling SCP3 with ab235254 at a 1/100 dilution (30mins at RT), followed by a ready to use anti-Rabbit poly-HRP-IgG secondary (8mins at RT).

Counterstained with hematoxylin.

Please note: All products are "FOR RESEARCH USE ONLY. NOT FOR USE IN DIAGNOSTIC PROCEDURES"

Our Abpromise to you: Quality guaranteed and expert technical support

- Replacement or refund for products not performing as stated on the datasheet
- Valid for 12 months from date of delivery
- Response to your inquiry within 24 hours
- We provide support in Chinese, English, French, German, Japanese and Spanish
- Extensive multi-media technical resources to help you
- We investigate all quality concerns to ensure our products perform to the highest standards

If the product does not perform as described on this datasheet, we will offer a refund or replacement. For full details of the Abpromise, please visit <https://www.abcam.com/abpromise> or contact our technical team.

Terms and conditions

- Guarantee only valid for products bought direct from Abcam or one of our authorized distributors