


Product datasheet

Anti-SCYL1 antibody ab137639

2 Images

Overview

<b>Product name</b>	Anti-SCYL1 antibody
<b>Description</b>	Rabbit polyclonal to SCYL1
<b>Host species</b>	Rabbit
<b>Tested applications</b>	<b>Suitable for:</b> ICC/IF, WB
<b>Species reactivity</b>	<b>Reacts with:</b> Human <b>Predicted to work with:</b> Mouse, Rat, Cow 
<b>Immunogen</b>	Recombinant fragment, corresponding to a region within amino acids 328-552 of Human SCYL1
<b>Positive control</b>	A431, H1299 or HeLa cell lysates Paraformaldehyde fixed Hela cells
<b>General notes</b>	Keep as concentrated solution.

Properties

<b>Form</b>	Liquid
<b>Storage instructions</b>	Shipped at 4°C. Upon delivery aliquot and store at -20°C. Avoid repeated freeze / thaw cycles.
<b>Storage buffer</b>	pH: 7.00 Preservative: 0.01% Thimerosal (merthiolate) Constituents: 1.21% Tris, 0.75% Glycine, 20% Glycerol
<b>Purity</b>	Immunogen affinity purified
<b>Clonality</b>	Polyclonal
<b>Isotype</b>	IgG

Applications

Our [Abpromise guarantee](#) covers the use of **ab137639** in the following tested applications.

The application notes include recommended starting dilutions; optimal dilutions/concentrations should be determined by the end user.

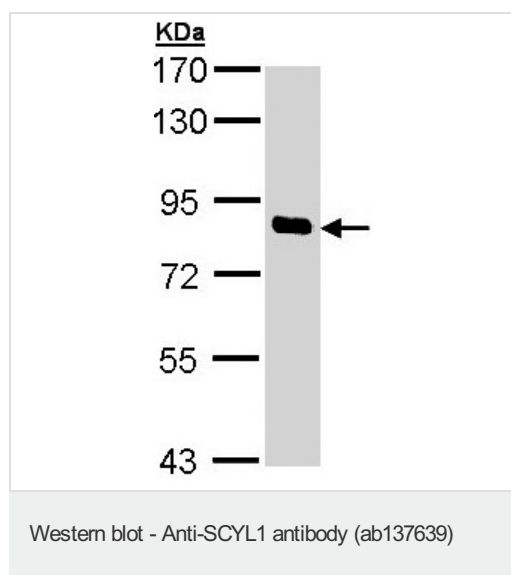
Application	Abreviews	Notes
ICC/IF		1/100 - 1/1000.

Application	Abreviews	Notes
WB		1/500 - 1/3000. Predicted molecular weight: 90 kDa.

## Target

<b>Function</b>	Regulates COPI-mediated retrograde traffic. Has no detectable kinase activity in vitro. Isoform 6 acts as transcriptional activator. It binds to three different types of GC-rich DNA binding sites (box-A, -B and -C) in the beta-polymerase promoter region. It also binds to the TERT promoter region.
<b>Tissue specificity</b>	Ubiquitous.
<b>Sequence similarities</b>	Belongs to the protein kinase superfamily. Contains 3 HEAT repeats. Contains 1 protein kinase domain.
<b>Domain</b>	The protein kinase domain is predicted to be catalytically inactive.
<b>Cellular localization</b>	Nucleus; Cytoplasm > cytoskeleton > centrosome. Endoplasmic reticulum-Golgi intermediate compartment. Golgi apparatus > cis-Golgi network. Localized to the Endoplasmic reticulum-Golgi intermediate and cis-Golgi in an ARF1-independent manner; Cytoplasm. Cytoplasm > cytoskeleton > centrosome. Cytoplasmic during interphase and centrosomal during mitosis, it localizes to the centrosomes in a microtubule-independent manner and Cytoplasm. Cytoplasmic throughout the cell cycle.

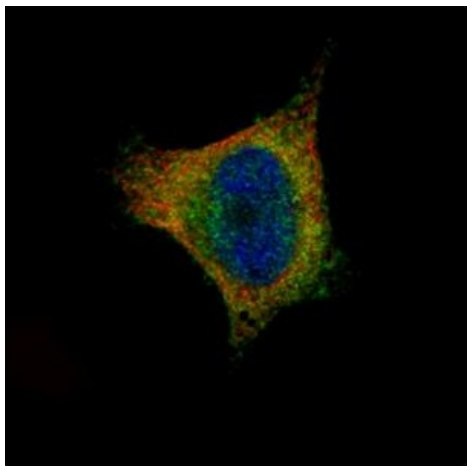
## Images



Anti-SCYL1 antibody (ab137639) at 1/1000 dilution + HeLa whole cell lysate at 30 µg

**Predicted band size:** 90 kDa

7.5% SDS PAGE



Immunocytochemistry/ Immunofluorescence - Anti-SCYL1 antibody (ab137639)

Confocal immunofluorescence analysis of paraformaldehyde fixed HeLa cells, labelling SCYL1 with ab137639 (Green) at 1/500 dilution. Alpha tubulin filaments were labelled with alpha tubulin antibody (Red) at 1/2500.

**Please note:** All products are "FOR RESEARCH USE ONLY. NOT FOR USE IN DIAGNOSTIC PROCEDURES"

### Our Abpromise to you: Quality guaranteed and expert technical support

---

- Replacement or refund for products not performing as stated on the datasheet
- Valid for 12 months from date of delivery
- Response to your inquiry within 24 hours
- We provide support in Chinese, English, French, German, Japanese and Spanish
- Extensive multi-media technical resources to help you
- We investigate all quality concerns to ensure our products perform to the highest standards

If the product does not perform as described on this datasheet, we will offer a refund or replacement. For full details of the Abpromise, please visit <https://www.abcam.com/abpromise> or contact our technical team.

### Terms and conditions

---

- Guarantee only valid for products bought direct from Abcam or one of our authorized distributors