




Product datasheet

Anti-Sec14l3/TAP2 antibody ab235110

3 Images

Overview

<b>Product name</b>	Anti-Sec14l3/TAP2 antibody
<b>Description</b>	Rabbit polyclonal to Sec14l3/TAP2
<b>Host species</b>	Rabbit
<b>Tested applications</b>	<b>Suitable for:</b> IHC-P, WB
<b>Species reactivity</b>	<b>Reacts with:</b> Mouse, Human <b>Predicted to work with:</b> Rat 
<b>Immunogen</b>	Recombinant fragment corresponding to Human Sec14l3/TAP2 aa 201-400. Sequence:  GYNLMKPFLSEDTRRKIIVLGNNWKEGLLKLISPEELPA QFGGTLTDPDG NPKCLTKINYGGEIPKSMYVRDQVKTQYEHSVQINRGS SHQVEYEILFPG CVLRWQFSSDGADIGFGVFLKTKMGERQRAGEMTDV LPSQRYNAHMVPED GNLTCEAGVYVLRFDNTYSFVHAKKVSFTVEVLLPD EGMQKYDKELTPV  Database link: <a href="#">Q9UDX4</a>  <div style="text-align: right;">  <a href="#">Run BLAST with</a>                   <a href="#">Run BLAST with</a> </div>
<b>Positive control</b>	WB: Mouse liver and lung lysates. IHC-P: Human testis and lung cancer tissue.
<b>General notes</b>	This product was previously labelled as Sec14l3

Properties

<b>Form</b>	Liquid
<b>Storage instructions</b>	Shipped at 4°C. Store at +4°C short term (1-2 weeks). Upon delivery aliquot. Store at -20°C long term. Avoid freeze / thaw cycle.
<b>Storage buffer</b>	pH: 7.40 Preservative: 0.03% Proclin Constituents: PBS, 50% Glycerol

<b>Purity</b>	Protein G purified
<b>Purification notes</b>	Purity >95%
<b>Clonality</b>	Polyclonal
<b>Isotype</b>	IgG

## Applications

Our [Abpromise guarantee](#) covers the use of **ab235110** in the following tested applications.

The application notes include recommended starting dilutions; optimal dilutions/concentrations should be determined by the end user.

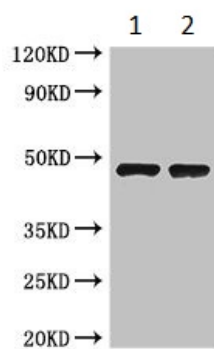
Application	Abreviews	Notes
IHC-P		1/20 - 1/200.
WB		1/500 - 1/5000. Predicted molecular weight: 46 kDa.

## Target

**Function** Probable hydrophobic ligand-binding protein; may play a role in the transport of hydrophobic ligands like tocopherol, squalene and phospholipids.

**Sequence similarities** Contains 1 CRAL-TRIO domain.  
Contains 1 GOLD domain.

## Images



Western blot - Anti-Sec14I3/TAP2 antibody (ab235110)

**All lanes** : Anti-Sec14I3/TAP2 antibody (ab235110) at 1/500 dilution

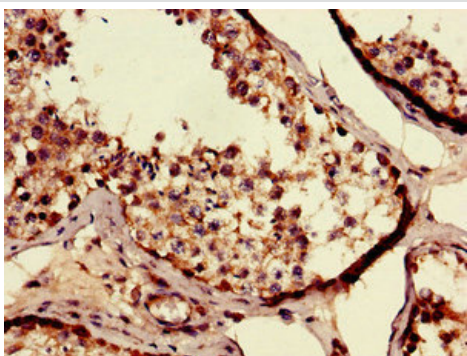
**Lane 1** : Mouse liver lysate

**Lane 2** : Mouse lung lysate

### Secondary

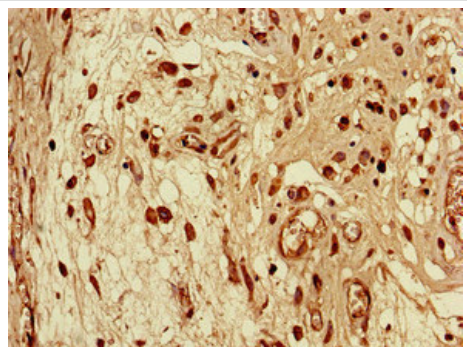
**All lanes** : Goat polyclonal to rabbit IgG at 1/50000 dilution

**Predicted band size:** 46 kDa



Paraffin-embedded human testis tissue stained for Sec14I3/TAP2 using ab235110 at 1/100 dilution in immunohistochemical analysis.

Immunohistochemistry (Formalin/PFA-fixed paraffin-embedded sections) - Anti-Sec14I3/TAP2 antibody (ab235110)



Paraffin-embedded human lung cancer tissue stained for Sec14I3/TAP2 using ab235110 at 1/100 dilution in immunohistochemical analysis.

Immunohistochemistry (Formalin/PFA-fixed paraffin-embedded sections) - Anti-Sec14I3/TAP2 antibody (ab235110)

**Please note:** All products are "FOR RESEARCH USE ONLY. NOT FOR USE IN DIAGNOSTIC PROCEDURES"

### **Our Abpromise to you: Quality guaranteed and expert technical support**

---

- Replacement or refund for products not performing as stated on the datasheet
- Valid for 12 months from date of delivery
- Response to your inquiry within 24 hours
- We provide support in Chinese, English, French, German, Japanese and Spanish
- Extensive multi-media technical resources to help you
- We investigate all quality concerns to ensure our products perform to the highest standards

If the product does not perform as described on this datasheet, we will offer a refund or replacement. For full details of the Abpromise,

please visit <https://www.abcam.com/abpromise> or contact our technical team.

## **Terms and conditions**

---

- Guarantee only valid for products bought direct from Abcam or one of our authorized distributors