

## Product datasheet

# Anti-SEC23B antibody ab151258

[3 References](#) [2 Images](#)

### Overview

---

<b>Product name</b>	Anti-SEC23B antibody
<b>Description</b>	Rabbit polyclonal to SEC23B
<b>Host species</b>	Rabbit
<b>Tested applications</b>	<b>Suitable for:</b> WB, IHC-P
<b>Species reactivity</b>	<b>Reacts with:</b> Human
<b>Immunogen</b>	Recombinant fragment, corresponding to a region within amino acids 1-210 of Human SEC23B (Uniprot: Q15437).
<b>Positive control</b>	Raji whole cell lysate, Ca922 oral cancer xenograft
<b>General notes</b>	<p>The Life Science industry has been in the grips of a reproducibility crisis for a number of years. Abcam is leading the way in addressing this with our range of recombinant monoclonal antibodies and knockout edited cell lines for gold-standard validation. Please check that this product meets your needs before purchasing.</p> <p>If you have any questions, special requirements or concerns, please send us an inquiry and/or contact our Support team ahead of purchase. Recommended alternatives for this product can be found below, along with publications, customer reviews and Q&amp;As</p>

### Properties

---

<b>Form</b>	Liquid
<b>Storage instructions</b>	Shipped at 4°C. Upon delivery aliquot. Store at -20°C or -80°C. Avoid freeze / thaw cycle.
<b>Storage buffer</b>	pH: 7.00 Preservative: 0.01% Thimerosal (merthiolate) Constituents: 1.21% Tris, 0.75% Glycine, 20% Glycerol (glycerin, glycerine)
<b>Purity</b>	Immunogen affinity purified
<b>Clonality</b>	Polyclonal
<b>Isotype</b>	IgG

### Applications

---

**The Abpromise guarantee** Our [Abpromise guarantee](#) covers the use of ab151258 in the following tested applications.

The application notes include recommended starting dilutions; optimal dilutions/concentrations should be determined by the end user.

Application	Abreviews	Notes
WB		1/500 - 1/3000. Predicted molecular weight: 86 kDa.
IHC-P		1/100 - 1/1000. Perform heat mediated antigen retrieval with citrate buffer pH 6 before commencing with IHC staining protocol. Alternatively Tris-EDTA buffer ( pH8.0) may be used.

## Target

### Function

Component of the COPII coat, that covers ER-derived vesicles involved in transport from the endoplasmic reticulum to the Golgi apparatus. COPII acts in the cytoplasm to promote the transport of secretory, plasma membrane, and vacuolar proteins from the endoplasmic reticulum to the Golgi complex.

### Involvement in disease

Defects in SEC23B are the cause of congenital dyserythropoietic anemia type 2 (CDA2) [MIM:224100]. An autosomal recessive blood disorder characterized by morphological abnormalities of erythroblasts, ineffective erythropoiesis, normocytic anemia, iron overload, jaundice, and variable splenomegaly. Ultrastructural features include bi- or multinucleated erythroblasts in bone marrow, karyorrhexis, and the presence of Gaucher-like bone marrow histiocytes. The main biochemical feature of the disease is defective glycosylation of some red blood cells membrane proteins.

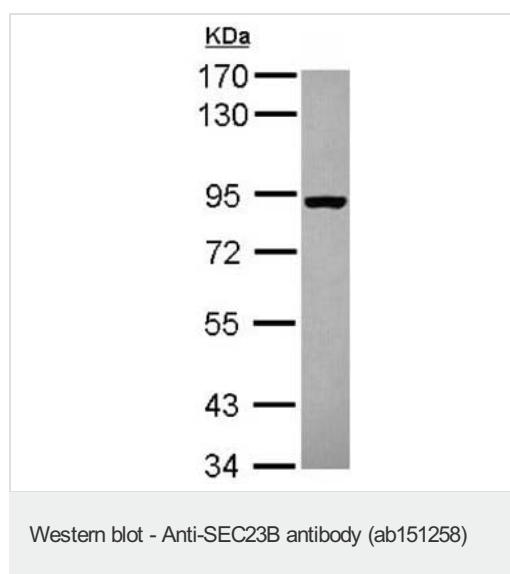
### Sequence similarities

Belongs to the SEC23/SEC24 family. SEC23 subfamily.

### Cellular localization

Golgi apparatus membrane. Endoplasmic reticulum membrane. Endoplasmic reticulum-Golgi intermediate compartment membrane.

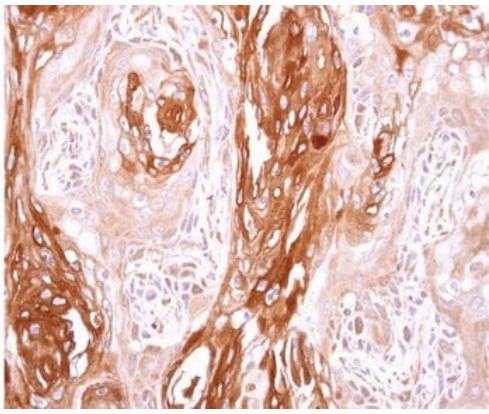
## Images



Anti-SEC23B antibody (ab151258) at 1/1000 dilution + Raji whole cell lysate at 30 µg

**Predicted band size: 86 kDa**

7.5% SDS PAGE



Immunohistochemical analysis of paraffin embedded Human Ca922 oral cancer xenograft labeling SEC23B with ab151258 antibody at 1/500.

Immunohistochemistry (Formalin/PFA-fixed paraffin-embedded sections) - Anti-SEC23B antibody (ab151258)

**Please note:** All products are "FOR RESEARCH USE ONLY. NOT FOR USE IN DIAGNOSTIC PROCEDURES"

#### **Our Abpromise to you: Quality guaranteed and expert technical support**

---

- Replacement or refund for products not performing as stated on the datasheet
- Valid for 12 months from date of delivery
- Response to your inquiry within 24 hours
- We provide support in Chinese, English, French, German, Japanese and Spanish
- Extensive multi-media technical resources to help you
- We investigate all quality concerns to ensure our products perform to the highest standards

If the product does not perform as described on this datasheet, we will offer a refund or replacement. For full details of the Abpromise, please visit <https://www.abcam.com/abpromise> or contact our technical team.

#### **Terms and conditions**

---

- Guarantee only valid for products bought direct from Abcam or one of our authorized distributors