

Product datasheet

Anti-SEC62 antibody ab168843

1 References 2 Images

Overview

<b>Product name</b>	Anti-SEC62 antibody
<b>Description</b>	Rabbit polyclonal to SEC62
<b>Host species</b>	Rabbit
<b>Tested applications</b>	<b>Suitable for:</b> WB, IP
<b>Species reactivity</b>	<b>Reacts with:</b> Mouse, Human <b>Predicted to work with:</b> Chimpanzee, Cynomolgus monkey, Rhesus monkey, Gorilla, Orangutan



**Immunogen** Synthetic peptide, corresponding to a region within amino acids 349-399 of Human SEC62 (NP\_003253.1).

 [Run BLAST with ExPASy](#)  [Run BLAST with NCBI](#)

**Positive control** HeLa, 293T, Jurkat, mouse TCMK-1 and mouse NIH3T3 whole cell lysates.

**General notes** Reproducibility is key to advancing scientific discovery and accelerating scientists' next breakthrough.

Abcam is leading the way with our range of recombinant antibodies, knockout-validated antibodies and knockout cell lines, all of which support improved reproducibility.

We are also planning to innovate the way in which we present recommended applications and species on our product datasheets, so that only applications & species that have been tested in our own labs, our suppliers or by selected trusted collaborators are covered by our Abpromise™ guarantee.

In preparation for this, we have started to update the applications & species that this product is Abpromise guaranteed for.

We are also updating the applications & species that this product has been “predicted to work with,” however this information is not covered by our Abpromise guarantee.

Applications & species from publications and Abreviews that have not been tested in our own labs or in those of our suppliers are not covered by the Abpromise guarantee.

Please check that this product meets your needs before purchasing. If you have any questions, special requirements or concerns, please send us an inquiry and/or contact our Support team ahead of purchase. Recommended alternatives for this product can be found below, as well as customer reviews and Q&As.

Properties

<b>Form</b>	Liquid
<b>Storage instructions</b>	Shipped at 4°C. Store at +4°C short term (1-2 weeks). Upon delivery aliquot. Store at -20°C long term.
<b>Storage buffer</b>	pH: 7 Preservative: 0.09% Sodium azide Constituent: 99% Tris citrate/phosphate
<b>Purity</b>	pH 7 to 8 Immunogen affinity purified
<b>Purification notes</b>	ab168843 was affinity purified using an epitope specific to SEC62 immobilized on solid support.
<b>Clonality</b>	Polyclonal
<b>Isotype</b>	IgG

## Applications

Our [Abpromise guarantee](#) covers the use of **ab168843** in the following tested applications.

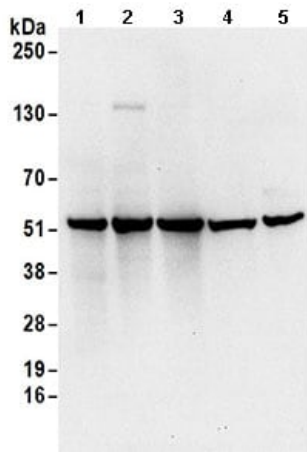
The application notes include recommended starting dilutions; optimal dilutions/concentrations should be determined by the end user.

Application	Abreviews	Notes
WB		1/2000 - 1/10000. Predicted molecular weight: 46 kDa.
IP		Use at 2-10 µg/mg of lysate.

## Target

<b>Function</b>	Required for preprotein translocation.
<b>Sequence similarities</b>	Belongs to the SEC62 family.
<b>Cellular localization</b>	Endoplasmic reticulum membrane.

## Images



Western blot - Anti-SEC62 antibody (ab168843)

**All lanes :** Anti-SEC62 antibody (ab168843) at 0.1  $\mu\text{g/ml}$

**Lane 1 :** HeLa whole cell lysate

**Lane 2 :** 293T whole cell lysate

**Lane 3 :** Jurkat whole cell lysate

**Lane 4 :** TCMK-1 whole cell lysate

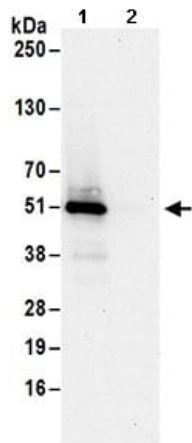
**Lane 5 :** NIH3T3 whole cell lysate

Lysates/proteins at 50  $\mu\text{g}$  per lane.

Developed using the ECL technique.

**Predicted band size:** 46 kDa

**Exposure time:** 10 seconds



Immunoprecipitation - Anti-SEC62 antibody  
(ab168843)

Detection of SEC62 in Immunoprecipitates of HeLa whole cell lysate (1 mg for IP, 20% of IP loaded) using ab168843 at 6  $\mu\text{g/mg}$  lysate for IP (Lane 1) and at 1  $\mu\text{g/ml}$  for subsequent Western blot detection. Lane 2 represents control IgG IP.

Detection: Chemiluminescence with an exposure time of 10 seconds.

**Please note:** All products are "FOR RESEARCH USE ONLY. NOT FOR USE IN DIAGNOSTIC PROCEDURES"

### Our Abpromise to you: Quality guaranteed and expert technical support

- Replacement or refund for products not performing as stated on the datasheet
- Valid for 12 months from date of delivery
- Response to your inquiry within 24 hours
- We provide support in Chinese, English, French, German, Japanese and Spanish
- Extensive multi-media technical resources to help you
- We investigate all quality concerns to ensure our products perform to the highest standards

If the product does not perform as described on this datasheet, we will offer a refund or replacement. For full details of the Abpromise,

please visit <https://www.abcam.com/abpromise> or contact our technical team.

## **Terms and conditions**

---

- Guarantee only valid for products bought direct from Abcam or one of our authorized distributors