




Product datasheet

Anti-SEC62 antibody ab244335

6 Images

Overview

| | |
|----------------------------|---|
| Product name | Anti-SEC62 antibody |
| Description | Rabbit polyclonal to SEC62 |
| Host species | Rabbit |
| Tested applications | Suitable for: WB, ICC/IF, IHC-P |
| Species reactivity | Reacts with: Human Predicted to work with: Mouse, Orangutan  |
| Immunogen | <p>Recombinant fragment corresponding to Human SEC62 aa 257-395. Sequence:</p> <p>GGRHHFWFLPNLTADVGFIDSRPLYTHEYKGPADLKKD EKSETKKQK SDSEEKSDSEKKEDEEGKVGPNGHGTGSGGERHSDT DSDRREDDRSQHS SGNGNDFEMITKEELEQQTDGDCEEDEEEENDGETPKS S</p> <p>Database link: Q99442</p> <p style="text-align: right;"> Run BLAST with  Run BLAST with</p> |
| Positive control | ICC/IF: A431 cells. WB: A431 cell lysate. IHC-P: Human cerebral cortex, prostate, endometrium and skeletal muscle tissue. |
| General notes | <p>Reproducibility is key to advancing scientific discovery and accelerating scientists' next breakthrough.</p> <p>Abcam is leading the way with our range of recombinant antibodies, knockout-validated antibodies and knockout cell lines, all of which support improved reproducibility.</p> <p>We are also planning to innovate the way in which we present recommended applications and species on our product datasheets, so that only applications & species that have been tested in our own labs, our suppliers or by selected trusted collaborators are covered by our Abpromise™ guarantee.</p> <p>In preparation for this, we have started to update the applications & species that this product is Abpromise guaranteed for.</p> <p>We are also updating the applications & species that this product has been “predicted to work with,” however this information is not covered by our Abpromise guarantee.</p> <p>Applications & species from publications and Abreviews that have not been tested in our own</p> |

labs or in those of our suppliers are not covered by the Abpromise guarantee.

Please check that this product meets your needs before purchasing. If you have any questions, special requirements or concerns, please send us an inquiry and/or contact our Support team ahead of purchase. Recommended alternatives for this product can be found below, as well as customer reviews and Q&As.

Properties

| | |
|-----------------------------|---|
| Form | Liquid |
| Storage instructions | Shipped at 4°C. Store at +4°C short term (1-2 weeks). Upon delivery aliquot. Store at -20°C long term. Avoid freeze / thaw cycle. |
| Storage buffer | pH: 7.20 Preservative: 0.02% Sodium azide Constituents: PBS, 40% Glycerol (glycerin, glycerine) |
| Purity | Immunogen affinity purified |
| Clonality | Polyclonal |
| Isotype | IgG |

Applications

Our [Abpromise guarantee](#) covers the use of **ab244335** in the following tested applications.

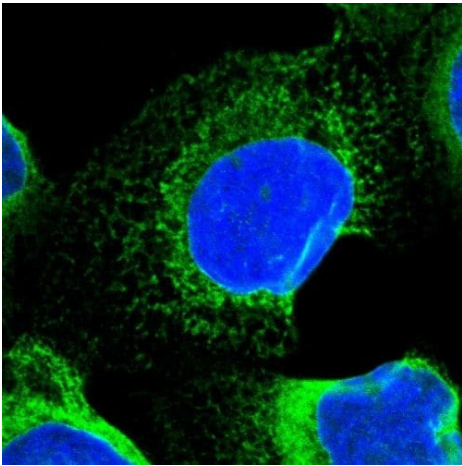
The application notes include recommended starting dilutions; optimal dilutions/concentrations should be determined by the end user.

| Application | Abreviews | Notes |
|-------------|-----------|--|
| WB | | Use a concentration of 0.04 - 0.4 µg/ml. |
| ICC/IF | | Use a concentration of 0.25 - 2 µg/ml. Fixation/Permeabilization: PFA/Triton X-100. |
| IHC-P | | 1/50 - 1/200. Perform heat mediated antigen retrieval with citrate buffer pH 6 before commencing with IHC staining protocol. |

Target

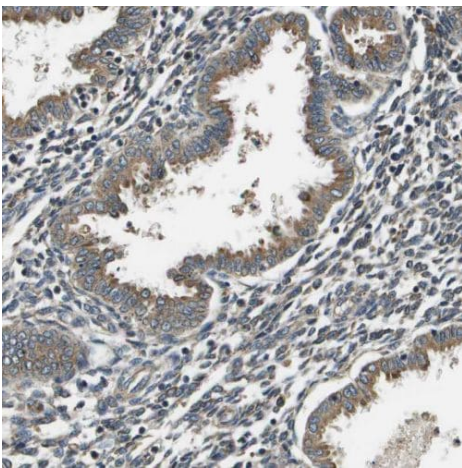
| | |
|------------------------------|--|
| Function | Required for preprotein translocation. |
| Sequence similarities | Belongs to the SEC62 family. |
| Cellular localization | Endoplasmic reticulum membrane. |

Images



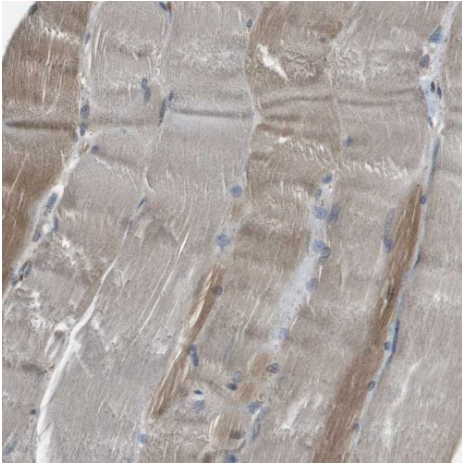
Immunocytochemistry/ Immunofluorescence - Anti-SEC62 antibody (ab244335)

PFA fixed, Triton X-100 permeabilized A431 (Human epidermoid carcinoma cell line) cells labeling SEC62 using ab244335 at 4 $\mu\text{g/ml}$ (green) in ICC/IF.



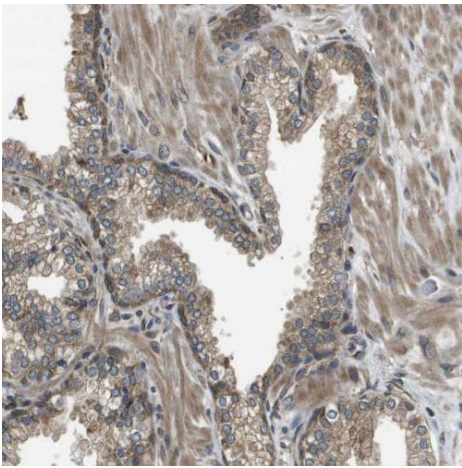
Immunohistochemistry (Formalin/PFA-fixed paraffin-embedded sections) - Anti-SEC62 antibody (ab244335)

Formalin-fixed, paraffin-embedded human endometrium tissue stained for SEC62 with ab244335 at a 1/50 dilution in immunohistochemical analysis.



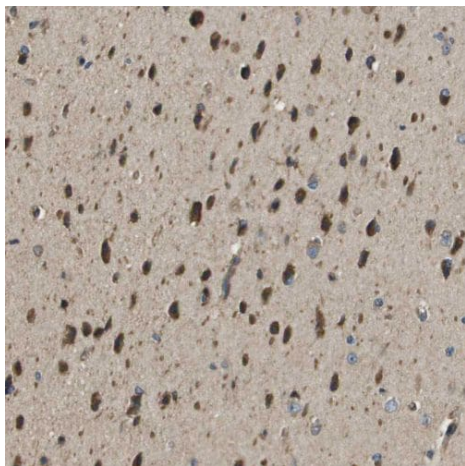
Immunohistochemistry (Formalin/PFA-fixed paraffin-embedded sections) - Anti-SEC62 antibody (ab244335)

Formalin-fixed, paraffin-embedded human skeletal muscle tissue stained for SEC62 with ab244335 at a 1/50 dilution in immunohistochemical analysis.



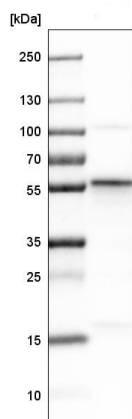
Immunohistochemistry (Formalin/PFA-fixed paraffin-embedded sections) - Anti-SEC62 antibody (ab244335)

Formalin-fixed, paraffin-embedded human prostate tissue stained for SEC62 with ab244335 at a 1/50 dilution in immunohistochemical analysis.



Formalin-fixed, paraffin-embedded human cerebral cortex tissue stained for SEC62 with ab244335 at a 1/50 dilution in immunohistochemical analysis.

Immunohistochemistry (Formalin/PFA-fixed paraffin-embedded sections) - Anti-SEC62 antibody (ab244335)



Anti-SEC62 antibody (ab244335) at 0.4 µg/ml + A431 (Human epidermoid carcinoma cell line) cell lysate

Western blot - Anti-SEC62 antibody (ab244335)

Please note: All products are "FOR RESEARCH USE ONLY. NOT FOR USE IN DIAGNOSTIC PROCEDURES"

Our Abpromise to you: Quality guaranteed and expert technical support

- Replacement or refund for products not performing as stated on the datasheet
- Valid for 12 months from date of delivery
- Response to your inquiry within 24 hours
- We provide support in Chinese, English, French, German, Japanese and Spanish
- Extensive multi-media technical resources to help you
- We investigate all quality concerns to ensure our products perform to the highest standards

If the product does not perform as described on this datasheet, we will offer a refund or replacement. For full details of the Abpromise, please visit <https://www.abcam.com/abpromise> or contact our technical team.

Terms and conditions

- Guarantee only valid for products bought direct from Abcam or one of our authorized distributors