

Product datasheet

Anti-SEMA5B antibody ab231202

2 Images

Overview

Product name	Anti-SEMA5B antibody
Description	Rabbit polyclonal to SEMA5B
Host species	Rabbit
Tested applications	Suitable for: WB
Species reactivity	Reacts with: Mouse
Immunogen	Recombinant fragment (His-tag) corresponding to Mouse SEMA5B aa 836-1013. N-terminal tag. Expressed in E. coli. Database link: Q60519
Positive control	WB: Recombinant mouse SEMA5B protein. Mouse serum.
General notes	<p>Reproducibility is key to advancing scientific discovery and accelerating scientists' next breakthrough.</p> <p>Abcam is leading the way with our range of recombinant antibodies, knockout-validated antibodies and knockout cell lines, all of which support improved reproducibility.</p> <p>We are also planning to innovate the way in which we present recommended applications and species on our product datasheets, so that only applications & species that have been tested in our own labs, our suppliers or by selected trusted collaborators are covered by our Abpromise™ guarantee.</p> <p>In preparation for this, we have started to update the applications & species that this product is Abpromise guaranteed for.</p> <p>We are also updating the applications & species that this product has been "predicted to work with," however this information is not covered by our Abpromise guarantee.</p> <p>Applications & species from publications and Abreviews that have not been tested in our own labs or in those of our suppliers are not covered by the Abpromise guarantee.</p> <p>Please check that this product meets your needs before purchasing. If you have any questions, special requirements or concerns, please send us an inquiry and/or contact our Support team ahead of purchase. Recommended alternatives for this product can be found below, as well as customer reviews and Q&As.</p>

Properties

Form	Liquid
-------------	--------

Storage instructions	Shipped at 4°C. Store at +4°C short term (1-2 weeks). Upon delivery aliquot. Store at -20°C long term. Avoid freeze / thaw cycle.
Storage buffer	pH: 7.40 Preservative: 0.02% Sodium azide Constituents: PBS, 50% Glycerol
Purity	Protein A purified
Purification notes	Antigen-specific affinity chromatography followed by Protein A affinity chromatography.
Clonality	Polyclonal
Isotype	IgG

Applications

Our [Abpromise guarantee](#) covers the use of **ab231202** in the following tested applications.

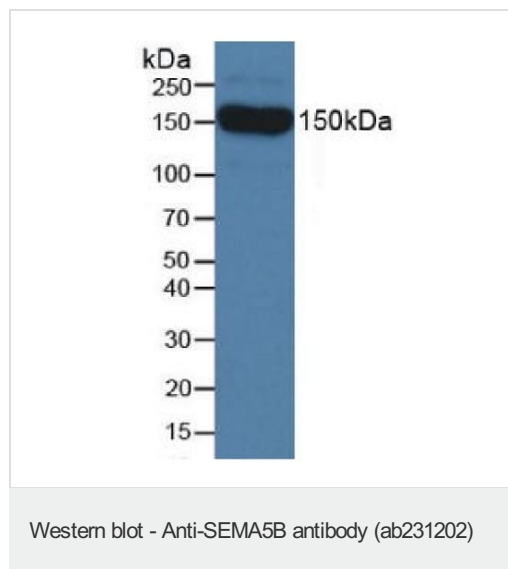
The application notes include recommended starting dilutions; optimal dilutions/concentrations should be determined by the end user.

Application	Abreviews	Notes
WB		Use a concentration of 0.5 - 2 µg/ml.

Target

Function	May act as positive axonal guidance cues.
Sequence similarities	Belongs to the semaphorin family. Contains 1 PSI domain. Contains 1 Sema domain. Contains 5 TSP type-1 domains.
Cellular localization	Membrane.

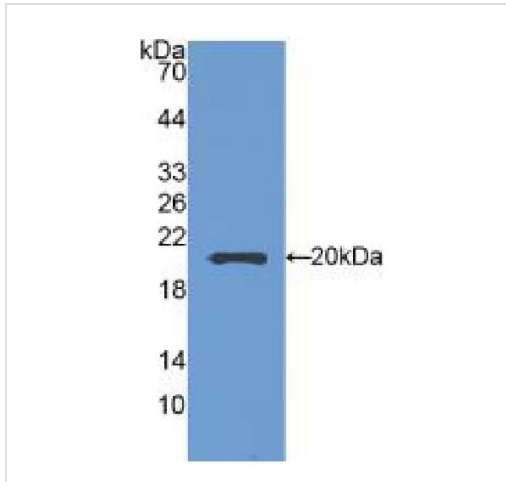
Images



Anti-SEMA5B antibody (ab231202) at 1 µg/ml + Mouse serum

Secondary

HRP-linked Guinea pig Anti-Rabbit at 1/2000 dilution



Western blot - Anti-SEMA5B antibody (ab231202)

Anti-SEMA5B antibody (ab231202) at 2 μ g/ml + Recombinant mouse SEMA5B protein.

Please note: All products are "FOR RESEARCH USE ONLY. NOT FOR USE IN DIAGNOSTIC PROCEDURES"

Our Abpromise to you: Quality guaranteed and expert technical support

- Replacement or refund for products not performing as stated on the datasheet
- Valid for 12 months from date of delivery
- Response to your inquiry within 24 hours
- We provide support in Chinese, English, French, German, Japanese and Spanish
- Extensive multi-media technical resources to help you
- We investigate all quality concerns to ensure our products perform to the highest standards

If the product does not perform as described on this datasheet, we will offer a refund or replacement. For full details of the Abpromise, please visit <https://www.abcam.com/abpromise> or contact our technical team.

Terms and conditions

- Guarantee only valid for products bought direct from Abcam or one of our authorized distributors