



Product datasheet

Anti-SEN7/SSP2 antibody ab224752

2 Images

Overview

Product name	Anti-SEN7/SSP2 antibody
Description	Rabbit polyclonal to SEN7/SSP2
Host species	Rabbit
Tested applications	Suitable for: ICC/IF, IHC-P
Species reactivity	Reacts with: Human
Immunogen	<p>Recombinant fragment corresponding to Human SEN7/SSP2 aa 333-467. Sequence:</p> <p>STISTEFEKPSENYHQDPKLPEEITTKPTKSDFTKLSSL NSQELTSLNAT KSASAGSTTETVENSNSIDVGISSLVEKDENELNTIEKP ILRGHNEGNQ SLISAEPVSSDEEGPVEHKSSEILKLQSKQDRE</p> <p>Database link: Q9BQF6</p> <p style="text-align: right;">  Run BLAST with  Run BLAST with </p>
Positive control	IHC-P: Human rectum tissue. ICC/IF: U-2 OS cells.
General notes	This product was previously labelled as SEN7

Properties

Form	Liquid
Storage instructions	Shipped at 4°C. Store at +4°C short term (1-2 weeks). Upon delivery aliquot. Store at -20°C long term. Avoid freeze / thaw cycle.
Storage buffer	<p>pH: 7.20 Preservative: 0.02% Sodium azide Constituents: 40% Glycerol, PBS</p>
Purity	Immunogen affinity purified
Clonality	Polyclonal
Isotype	IgG

Applications

Our [Abpromise guarantee](#) covers the use of **ab224752** in the following tested applications.

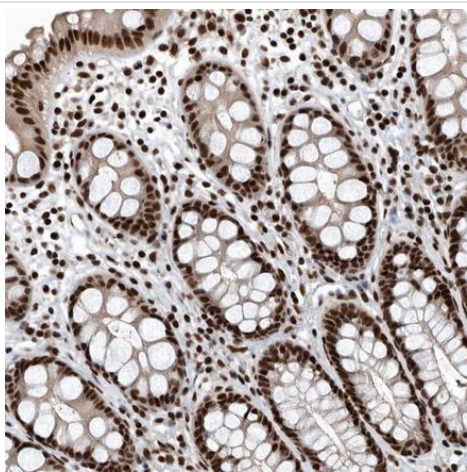
The application notes include recommended starting dilutions; optimal dilutions/concentrations should be determined by the end user.

Application	Abreviews	Notes
ICC/IF		Use a concentration of 1 - 4 µg/ml. Fixation/Permeabilization: PFA/Triton X-100.
IHC-P		1/50 - 1/200. Perform heat mediated antigen retrieval with citrate buffer pH 6 before commencing with IHC staining protocol.

Target

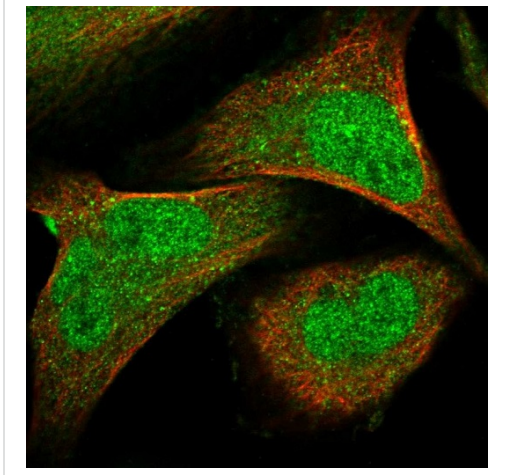
Function	Protease that deconjugates SUMO2 and SUMO3 from targeted proteins, but not SUMO1. Catalyzes the deconjugation of poly-SUMO2 and poly-SUMO3 chains. Has very low efficiency in processing full-length SUMO proteins to their mature forms.
Sequence similarities	Belongs to the peptidase C48 family.

Images



Paraffin-embedded human rectum tissue stained for SENP7/SSP2 using ab224752 at 1/50 dilution in immunohistochemical analysis.

Immunohistochemistry (Formalin/PFA-fixed paraffin-embedded sections) - Anti-SENP7/SSP2 antibody (ab224752)



Immunocytochemistry/ Immunofluorescence - Anti-
SENP7/SSP2 antibody (ab224752)

PFA-fixed, Triton X-100 permeabilized U-2 OS (human bone osteosarcoma epithelial cell line) cells stained for SENP7/SSP2 (green) using ab224752 at 4 µg/ml in ICC/IF.

Please note: All products are "FOR RESEARCH USE ONLY. NOT FOR USE IN DIAGNOSTIC PROCEDURES"

Our Abpromise to you: Quality guaranteed and expert technical support

- Replacement or refund for products not performing as stated on the datasheet
- Valid for 12 months from date of delivery
- Response to your inquiry within 24 hours
- We provide support in Chinese, English, French, German, Japanese and Spanish
- Extensive multi-media technical resources to help you
- We investigate all quality concerns to ensure our products perform to the highest standards

If the product does not perform as described on this datasheet, we will offer a refund or replacement. For full details of the Abpromise, please visit <https://www.abcam.com/abpromise> or contact our technical team.

Terms and conditions

- Guarantee only valid for products bought direct from Abcam or one of our authorized distributors