




Product datasheet

Anti-SEPT5 antibody ab233431

8 Images

Overview

Product name	Anti-SEPT5 antibody
Description	Rabbit polyclonal to SEPT5
Host species	Rabbit
Tested applications	Suitable for: WB, IHC-P
Species reactivity	Reacts with: Human, Pig Predicted to work with: Mouse, Rat, Cow, Cynomolgus monkey 
Immunogen	Recombinant fragment (His-tag) corresponding to Human SEPT5 aa 77-323. Expressed in E.coli. Sequence: SAEERISQTVEILKHTVDIEEKGVKCLKLTMDTPGFGDAV NNTWCWKPIIT DYVDQQFEQYFRDESGLNKRNQDNRVHCCLYFISPFG HGLRPVDVGFMK ALHEKVNIVPLIAKADCLVPSEIRKLKERIREEIDKFGIHV YQFPECDS EDEDFKQQDRELKESAPFAVIGSNTVVEAKGQQRVRG RLYPWGIVEVENQA HCDFVKLRNMLIRTHMHDLDKDVTCDVHYENYRAHCIQQ MTSKLTQDS Database link: Q99719 <div style="text-align: right;">  Run BLAST with  Run BLAST with </div>
Positive control	WB: Recombinant human SEPT5 protein; Pig brain and heart lysates; HepG2 cell lysate. IHC-P: Human stomach, liver cancer, brain, prostate, breast cancer and pancreas tissues.

Properties

Form	Liquid
Storage instructions	Shipped at 4°C. Store at +4°C short term (1-2 weeks). Upon delivery aliquot. Store at -20°C long term. Avoid freeze / thaw cycle.
Storage buffer	pH: 7.40 Preservative: 0.02% Sodium azide

	Constituents: PBS, 50% Glycerol
Purity	Immunogen affinity purified
Clonality	Polyclonal
Isotype	IgG

Applications

Our [Abpromise guarantee](#) covers the use of **ab233431** in the following tested applications.

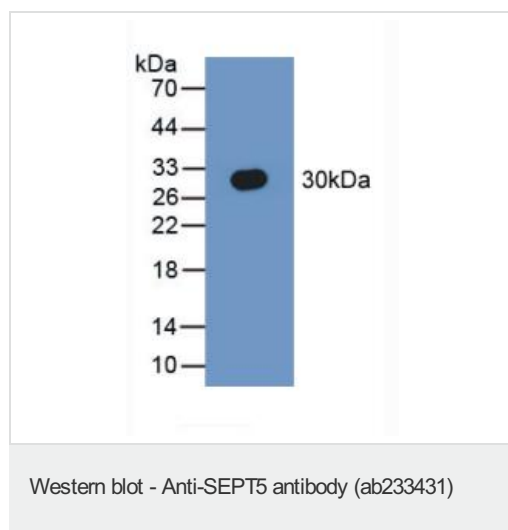
The application notes include recommended starting dilutions; optimal dilutions/concentrations should be determined by the end user.

Application	Abreviews	Notes
WB		Use a concentration of 0.5 - 2 µg/ml. Predicted molecular weight: 43 kDa.
IHC-P		Use a concentration of 5 - 20 µg/ml.

Target

Function	Filament-forming cytoskeletal GTPase (By similarity). May play a role in cytokinesis (Potential). May play a role in platelet secretion.
Tissue specificity	Expressed at high levels in the CNS, as well as in heart and platelets (at protein level).
Sequence similarities	Belongs to the septin family.
Post-translational modifications	In platelets, phosphorylated in response to thrombin, phorbol-12-myristate-13-acetate and collagen.
Cellular localization	Cytoplasm. Cytoplasm > cytoskeleton. In platelets, found in areas surrounding alpha-granules.

Images

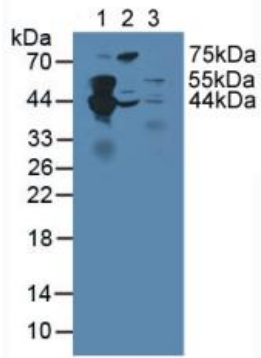


Anti-SEPT5 antibody (ab233431) at 3 µg/ml + Recombinant human SEPT5 protein

Secondary

HRP-Linked Guinea pig anti-Rabbit at 1/2000 dilution

Predicted band size: 43 kDa



Western blot - Anti-SEPT5 antibody (ab233431)

All lanes : Anti-SEPT5 antibody (ab233431) at 3 µg/ml

Lane 1 : Pig brain lysate

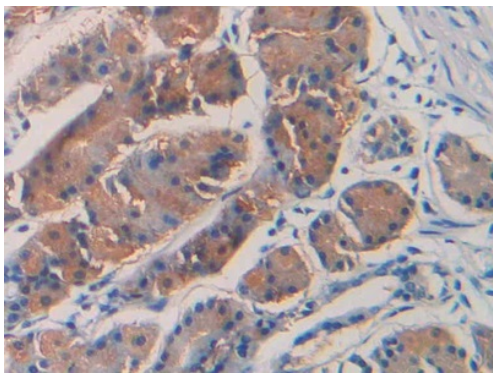
Lane 2 : Pig heart lysate

Lane 3 : HepG2 (human liver hepatocellular carcinoma cell line) cell lysate

Secondary

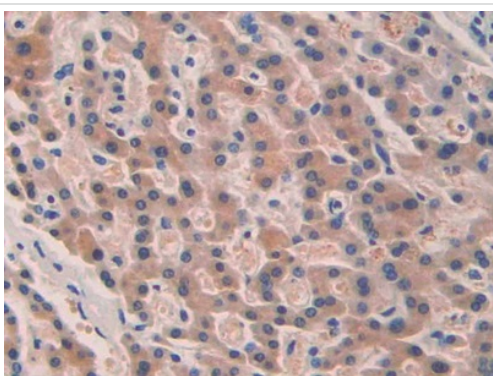
All lanes : HRP-Linked Guinea pig anti-Rabbit at 1/2000 dilution

Predicted band size: 43 kDa



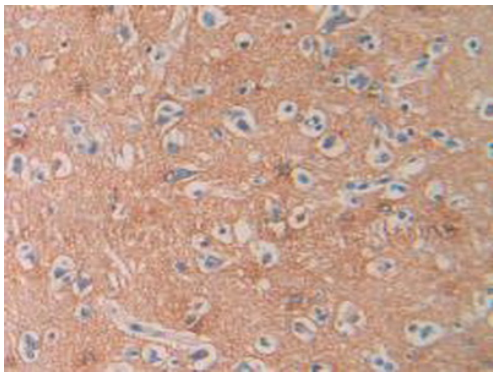
Immunohistochemistry (Formalin/PFA-fixed paraffin-embedded sections) - Anti-SEPT5 antibody (ab233431)

Formalin-fixed, paraffin-embedded human stomach tissue stained for SEPT5 using ab233431 at 25 µg/ml in immunohistochemical analysis. DAB staining.



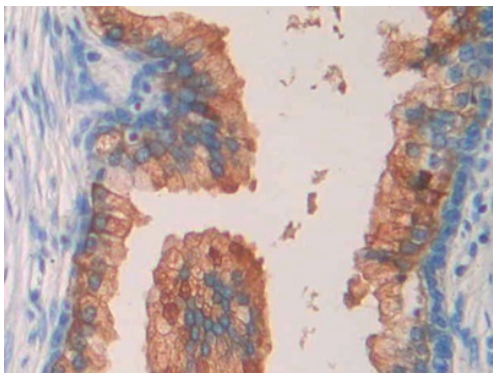
Immunohistochemistry (Formalin/PFA-fixed paraffin-embedded sections) - Anti-SEPT5 antibody (ab233431)

Formalin-fixed, paraffin-embedded human liver cancer tissue stained for SEPT5 using ab233431 at 25 µg/ml in immunohistochemical analysis. DAB staining.



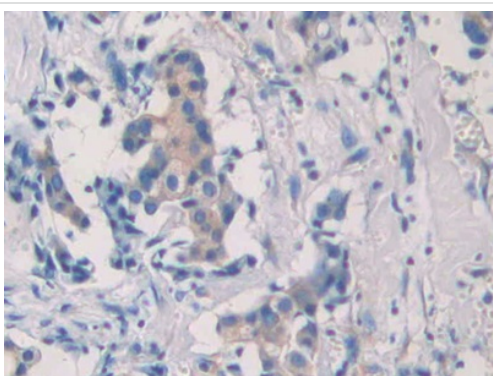
Immunohistochemistry (Formalin/PFA-fixed paraffin-embedded sections) - Anti-SEPT5 antibody (ab233431)

Formalin-fixed, paraffin-embedded human brain tissue stained for SEPT5 using ab233431 at 25 $\mu\text{g}/\text{ml}$ in immunohistochemical analysis. DAB staining.



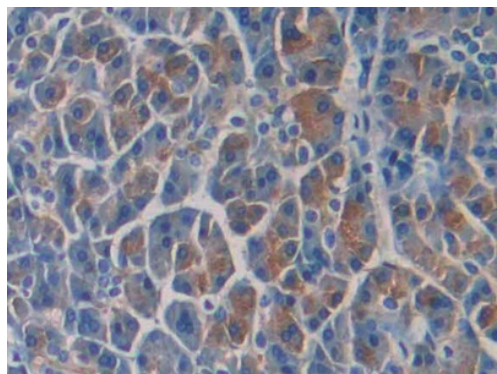
Immunohistochemistry (Formalin/PFA-fixed paraffin-embedded sections) - Anti-SEPT5 antibody (ab233431)

Formalin-fixed, paraffin-embedded human prostate tissue stained for SEPT5 using ab233431 at 25 $\mu\text{g}/\text{ml}$ in immunohistochemical analysis. DAB staining.



Immunohistochemistry (Formalin/PFA-fixed paraffin-embedded sections) - Anti-SEPT5 antibody (ab233431)

Formalin-fixed, paraffin-embedded human breast cancer tissue stained for SEPT5 using ab233431 at 25 $\mu\text{g}/\text{ml}$ in immunohistochemical analysis. DAB staining.



Immunohistochemistry (Formalin/PFA-fixed paraffin-embedded sections) - Anti-SEPT5 antibody (ab233431)

Formalin-fixed, paraffin-embedded human pancreas tissue stained for SEPT5 using ab233431 at 25 µg/ml in immunohistochemical analysis. DAB staining.

Please note: All products are "FOR RESEARCH USE ONLY. NOT FOR USE IN DIAGNOSTIC PROCEDURES"

Our Abpromise to you: Quality guaranteed and expert technical support

- Replacement or refund for products not performing as stated on the datasheet
- Valid for 12 months from date of delivery
- Response to your inquiry within 24 hours
- We provide support in Chinese, English, French, German, Japanese and Spanish
- Extensive multi-media technical resources to help you
- We investigate all quality concerns to ensure our products perform to the highest standards

If the product does not perform as described on this datasheet, we will offer a refund or replacement. For full details of the Abpromise, please visit <https://www.abcam.com/abpromise> or contact our technical team.

Terms and conditions

- Guarantee only valid for products bought direct from Abcam or one of our authorized distributors