




Product datasheet

Anti-SEPT7 antibody ab186010

★★★★★ 2 Abreviews 2 Images

Overview

<b>Product name</b>	Anti-SEPT7 antibody
<b>Description</b>	Rabbit polyclonal to SEPT7
<b>Host species</b>	Rabbit
<b>Tested applications</b>	<b>Suitable for:</b> IP, WB
<b>Species reactivity</b>	<b>Reacts with:</b> Mouse, Human <b>Predicted to work with:</b> Rat, Rabbit, Horse, Chicken, Guinea pig, Cow, Cat, Dog, Pig, Chimpanzee, Rhesus monkey, Gorilla, Chinese hamster, Orangutan 
<b>Immunogen</b>	Synthetic peptide within Human SEPT7 aa 75-125. The exact sequence is proprietary. NP_001779.3 Sequence:  LYPEYPGPPSHRIKKTQVEQSKVLIKEGGVQLLLTMD TPGFDAVDNS N  Database link: <a href="#">Q16181</a>   <a href="#">Run BLAST with</a>  <a href="#">Run BLAST with</a>
<b>Positive control</b>	HeLa, 293T, Jurkat, TCMK-1, NIH3T3 whole cell lysates,

Properties

<b>Form</b>	Liquid
<b>Storage instructions</b>	Shipped at 4°C. Store at +4°C short term (1-2 weeks). Upon delivery aliquot. Store at -20°C long term. Avoid freeze / thaw cycle.
<b>Storage buffer</b>	pH: 7 Preservative: 0.09% Sodium azide Constituent: 99% Tris citrate/phosphate  pH 7.0-8.0
<b>Purity</b>	Immunogen affinity purified
<b>Clonality</b>	Polyclonal
<b>Isotype</b>	IgG

## Applications

Our [Abpromise guarantee](#) covers the use of **ab186010** in the following tested applications.

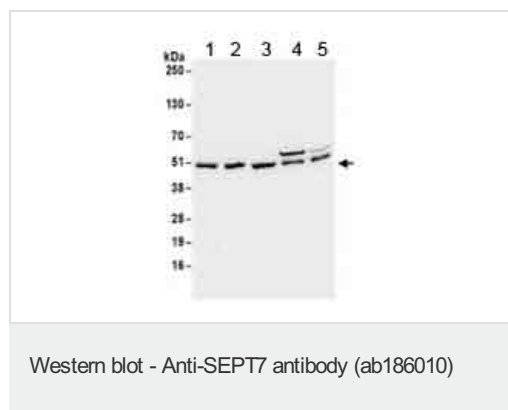
The application notes include recommended starting dilutions; optimal dilutions/concentrations should be determined by the end user.

Application	Abreviews	Notes
IP		Use at 2-10 µg/mg of lysate.
WB	★★★★★	1/2000 - 1/10000. Predicted molecular weight: 51 kDa.

## Target

<b>Function</b>	Filament-forming cytoskeletal GTPase. Required for normal organization of the actin cytoskeleton. Required for normal progress through mitosis. Involved in cytokinesis. Required for normal association of CENPE with the kinetochore. Plays a role in ciliogenesis and collective cell movements.
<b>Tissue specificity</b>	Widely expressed.
<b>Sequence similarities</b>	Belongs to the septin family.
<b>Cellular localization</b>	Cytoplasm. Chromosome > centromere > kinetochore. Cytoplasm > cytoskeleton > spindle. Cleavage furrow. Midbody. Cytoplasm > cytoskeleton > cilium axoneme. Distributed throughout the cytoplasm in prometaphase cells. Associated with the spindle during metaphase. Associated with the central spindle and at the cleavage furrow in anaphase cells. Detected at the midbody in telophase. Associated with actin stress fibers.

## Images



**All lanes :** Anti-SEPT7 antibody (ab186010) at 0.1 µg/ml

**Lane 1 :** HeLa whole cell lysate

**Lane 2 :** 293T cell whole cell lysate

**Lane 3 :** Jurkat whole cell lysate

**Lane 4 :** TCMK-1 whole cell lysate

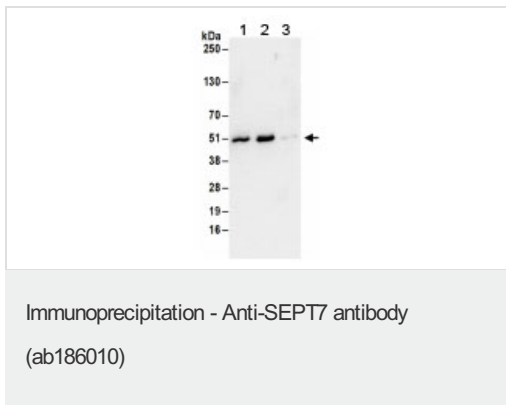
**Lane 5 :** NIH3T3 whole cell lysate

Lysates/proteins at 50 µg per lane.

Developed using the ECL technique.

**Predicted band size:** 51 kDa

**Exposure time:** 30 seconds



Detection of SEPT7 by Western Blot of Immunoprecipitates.  
 Samples: Whole cell lysate (1 mg for IP; 20% of IP loaded) from HeLa cells was immunoprecipitated using ab186010 at 6 µg/mg (1), a control rabbit anti-SEPT7 antibody (2) and negative control IgG (3). For blotting immunoprecipitated SEPT7 ab186010 was used at 1 µg/ml. ECL with an exposure time of 10 seconds was used for detection.

**Please note:** All products are "FOR RESEARCH USE ONLY. NOT FOR USE IN DIAGNOSTIC PROCEDURES"

### Our Abpromise to you: Quality guaranteed and expert technical support

- Replacement or refund for products not performing as stated on the datasheet
- Valid for 12 months from date of delivery
- Response to your inquiry within 24 hours
- We provide support in Chinese, English, French, German, Japanese and Spanish
- Extensive multi-media technical resources to help you
- We investigate all quality concerns to ensure our products perform to the highest standards

If the product does not perform as described on this datasheet, we will offer a refund or replacement. For full details of the Abpromise, please visit <https://www.abcam.com/abpromise> or contact our technical team.

### Terms and conditions

- Guarantee only valid for products bought direct from Abcam or one of our authorized distributors