

Product datasheet

Anti-SEPT7 antibody ab186021

★★★★★ 1 Abreviews 2 References 2 Images

Overview

Product name	Anti-SEPT7 antibody
Description	Rabbit polyclonal to SEPT7
Host species	Rabbit
Tested applications	Suitable for: IP, WB
Species reactivity	Reacts with: Mouse, Human Predicted to work with: Rat, Rabbit, Horse, Chicken, Guinea pig, Cow, Dog, Turkey, Pig, Xenopus laevis, Chimpanzee, Zebrafish, Rhesus monkey, Gorilla, Orangutan, Xenopus tropicalis



Immunogen Synthetic peptide within Human SEPT7 aa 387-437. The exact sequence is proprietary. Sequence:

KKNLEAQHKELEEKRRQFEDEKANWEAQQRILEQQNSSR
TLEKNKKKGKIF

Database link: [Q16181](#)

 [Run BLAST with](#)

 [Run BLAST with](#)

Positive control HeLa, 293T, Jurkat, TCMK-1 and NIH3T3 whole cell lysates.

General notes

Reproducibility is key to advancing scientific discovery and accelerating scientists' next breakthrough.

Abcam is leading the way with our range of recombinant antibodies, knockout-validated antibodies and knockout cell lines, all of which support improved reproducibility.

We are also planning to innovate the way in which we present recommended applications and species on our product datasheets, so that only applications & species that have been tested in our own labs, our suppliers or by selected trusted collaborators are covered by our Abpromise™ guarantee.

In preparation for this, we have started to update the applications & species that this product is Abpromise guaranteed for.

We are also updating the applications & species that this product has been "predicted to work with," however this information is not covered by our Abpromise guarantee.

Applications & species from publications and Abreviews that have not been tested in our own labs or in those of our suppliers are not covered by the Abpromise guarantee.

Please check that this product meets your needs before purchasing. If you have any questions,

special requirements or concerns, please send us an inquiry and/or contact our Support team ahead of purchase. Recommended alternatives for this product can be found below, as well as customer reviews and Q&As.

Properties

Form	Liquid
Storage instructions	Shipped at 4°C. Store at +4°C short term (1-2 weeks). Upon delivery aliquot. Store at -20°C long term. Avoid freeze / thaw cycle.
Storage buffer	pH: 7 Preservative: 0.09% Sodium azide Constituent: 99% Tris citrate/phosphate pH 7 to 8
Purity	Immunogen affinity purified
Clonality	Polyclonal
Isotype	IgG

Applications

Our [Abpromise guarantee](#) covers the use of **ab186021** in the following tested applications.

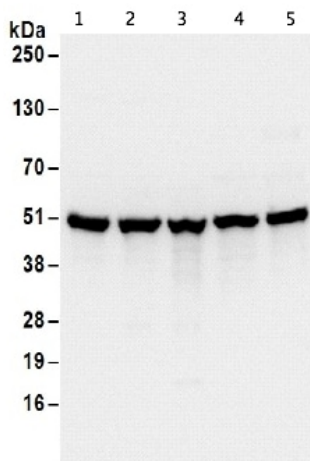
The application notes include recommended starting dilutions; optimal dilutions/concentrations should be determined by the end user.

Application	Abreviews	Notes
IP		Use at 2-10 µg/mg of lysate.
WB		1/2000 - 1/10000. Predicted molecular weight: 51 kDa.

Target

Function	Filament-forming cytoskeletal GTPase. Required for normal organization of the actin cytoskeleton. Required for normal progress through mitosis. Involved in cytokinesis. Required for normal association of CENPE with the kinetochore. Plays a role in ciliogenesis and collective cell movements.
Tissue specificity	Widely expressed.
Sequence similarities	Belongs to the septin family.
Cellular localization	Cytoplasm. Chromosome > centromere > kinetochore. Cytoplasm > cytoskeleton > spindle. Cleavage furrow. Midbody. Cytoplasm > cytoskeleton > cilium axoneme. Distributed throughout the cytoplasm in prometaphase cells. Associated with the spindle during metaphase. Associated with the central spindle and at the cleavage furrow in anaphase cells. Detected at the midbody in telophase. Associated with actin stress fibers.

Images



Western blot - Anti-SEPT7 antibody (ab186021)

All lanes : Anti-SEPT7 antibody (ab186021) at 0.1 µg/ml

Lane 1 : HeLa whole cell lysate

Lane 2 : 293T whole cell lysate

Lane 3 : Jurkat whole cell lysate

Lane 4 : TCMK-1 whole cell lysate

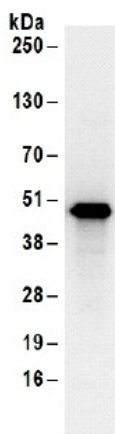
Lane 5 : NIH3T3 whole cell lysate

Lysates/proteins at 50 µg per lane.

Developed using the ECL technique.

Predicted band size: 51 kDa

Exposure time: 1 second



Immunoprecipitation - Anti-SEPT7 antibody (ab186021)

ab186021 at 1 µg/ml detecting SEPT7 in HeLa whole cell lysate by WB following IP. ab186021 was used for IP at 6 µg/mg of lysate, 1 mg of lysate was used for IP and 20% of the IP was loaded.

Detection: Chemiluminescence with an exposure time of 1 second.

Please note: All products are "FOR RESEARCH USE ONLY. NOT FOR USE IN DIAGNOSTIC PROCEDURES"

Our Abpromise to you: Quality guaranteed and expert technical support

- Replacement or refund for products not performing as stated on the datasheet
- Valid for 12 months from date of delivery
- Response to your inquiry within 24 hours
- We provide support in Chinese, English, French, German, Japanese and Spanish
- Extensive multi-media technical resources to help you
- We investigate all quality concerns to ensure our products perform to the highest standards

If the product does not perform as described on this datasheet, we will offer a refund or replacement. For full details of the Abpromise, please visit <https://www.abcam.com/abpromise> or contact our technical team.

Terms and conditions

- Guarantee only valid for products bought direct from Abcam or one of our authorized distributors