




## Product datasheet

# Anti-SEPT7 antibody ab244434

9 Images

### Overview

<b>Product name</b>	Anti-SEPT7 antibody
<b>Description</b>	Rabbit polyclonal to SEPT7
<b>Host species</b>	Rabbit
<b>Tested applications</b>	<b>Suitable for:</b> IHC-P, ICC/IF, WB
<b>Species reactivity</b>	<b>Reacts with:</b> Mouse, Rat, Human <b>Predicted to work with:</b> Orangutan 
<b>Immunogen</b>	Recombinant fragment corresponding to Human SEPT7 aa 187-269. Sequence:  VNIIPLIAKADLTPEECQQFKKQIMKEIQEHKIKIYFPETDD EEENKL VKKIKDRLPLAVVGSNTIEVNGKRVGRQYPW  Database link: <a href="#">Q16181</a>   <a href="#">Run BLAST with</a>  <a href="#">Run BLAST with</a>
<b>Positive control</b>	WB: RT4, U-2 OS, NIH/3T3, NBT II and U-251 MG cell lysates; human liver and tonsil tissue lysates. IHC-P: Human fallopian tube, cerebral cortex, testis and lymph node tissue. ICC/IF: A431 cells.
<b>General notes</b>	<p>Reproducibility is key to advancing scientific discovery and accelerating scientists' next breakthrough.</p> <p>Abcam is leading the way with our range of recombinant antibodies, knockout-validated antibodies and knockout cell lines, all of which support improved reproducibility.</p> <p>We are also planning to innovate the way in which we present recommended applications and species on our product datasheets, so that only applications &amp; species that have been tested in our own labs, our suppliers or by selected trusted collaborators are covered by our Abpromise™ guarantee.</p> <p>In preparation for this, we have started to update the applications &amp; species that this product is Abpromise guaranteed for.</p> <p>We are also updating the applications &amp; species that this product has been “predicted to work with,” however this information is not covered by our Abpromise guarantee.</p> <p>Applications &amp; species from publications and Abreviews that have not been tested in our own labs or in those of our suppliers are not covered by the Abpromise guarantee.</p> <p>Please check that this product meets your needs before purchasing. If you have any questions, special requirements or concerns, please send us an inquiry and/or contact our Support team</p>

ahead of purchase. Recommended alternatives for this product can be found below, as well as customer reviews and Q&As.

## Properties

---

<b>Form</b>	Liquid
<b>Storage instructions</b>	Shipped at 4°C. Store at +4°C short term (1-2 weeks). Upon delivery aliquot. Store at -20°C long term. Avoid freeze / thaw cycle.
<b>Storage buffer</b>	pH: 7.20 Preservative: 0.02% Sodium azide Constituents: PBS, 40% Glycerol (glycerin, glycerine)
<b>Purity</b>	Immunogen affinity purified
<b>Clonality</b>	Polyclonal
<b>Isotype</b>	IgG

## Applications

---

Our [Abpromise guarantee](#) covers the use of **ab244434** in the following tested applications.

The application notes include recommended starting dilutions; optimal dilutions/concentrations should be determined by the end user.

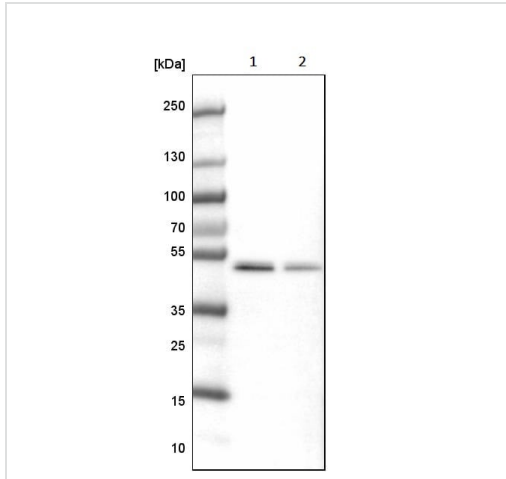
Application	Abreviews	Notes
IHC-P		1/500 - 1/1000. Perform heat mediated antigen retrieval with citrate buffer pH 6 before commencing with IHC staining protocol.
ICC/IF		Use a concentration of 0.25 - 2 µg/ml. Fixation/Permeabilization: PFA/Triton X-100.
WB		Use a concentration of 0.04 - 0.4 µg/ml. Predicted molecular weight: 51 kDa.

## Target

---

<b>Function</b>	Filament-forming cytoskeletal GTPase. Required for normal organization of the actin cytoskeleton. Required for normal progress through mitosis. Involved in cytokinesis. Required for normal association of CENPE with the kinetochore. Plays a role in ciliogenesis and collective cell movements.
<b>Tissue specificity</b>	Widely expressed.
<b>Sequence similarities</b>	Belongs to the septin family.
<b>Cellular localization</b>	Cytoplasm. Chromosome > centromere > kinetochore. Cytoplasm > cytoskeleton > spindle. Cleavage furrow. Midbody. Cytoplasm > cytoskeleton > cilium axoneme. Distributed throughout the cytoplasm in prometaphase cells. Associated with the spindle during metaphase. Associated with the central spindle and at the cleavage furrow in anaphase cells. Detected at the midbody in telophase. Associated with actin stress fibers.

---



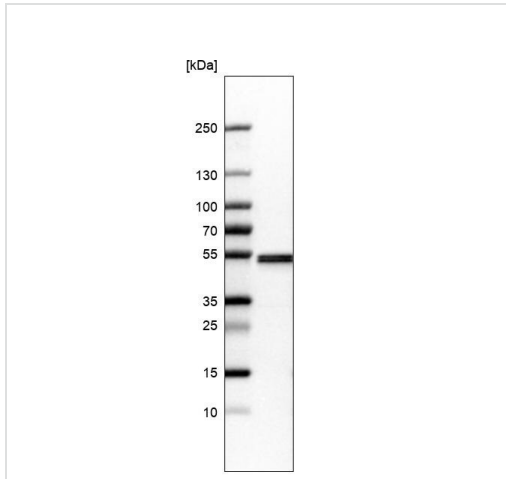
Western blot - Anti-SEPT7 antibody (ab244434)

**All lanes :** Anti-SEPT7 antibody (ab244434) at 0.4 µg/ml

**Lane 1 :** NIH/3T3 (mouse embryo fibroblast cell line) cell lysate

**Lane 2 :** NBT II (rat cell line) cell lysate

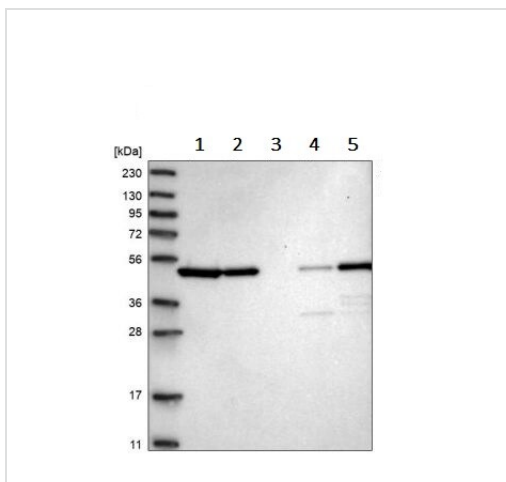
**Predicted band size:** 51 kDa



Western blot - Anti-SEPT7 antibody (ab244434)

Anti-SEPT7 antibody (ab244434) at 0.4 µg/ml + U-2 OS (human bone osteosarcoma epithelial cell line) cell lysate

**Predicted band size:** 51 kDa



Western blot - Anti-SEPT7 antibody (ab244434)

**All lanes :** Anti-SEPT7 antibody (ab244434) at 0.4 µg/ml

**Lane 1 :** RT4 (human urinary bladder cancer cell line) cell lysate

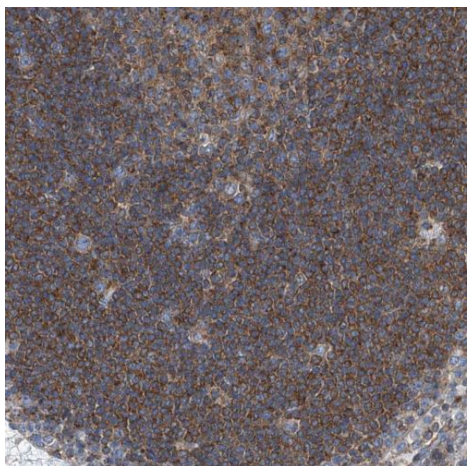
**Lane 2 :** U-251 MG (human brain glioma cell line) cell lysate

**Lane 3 :** Human plasma

**Lane 4 :** Human liver tissue lysate

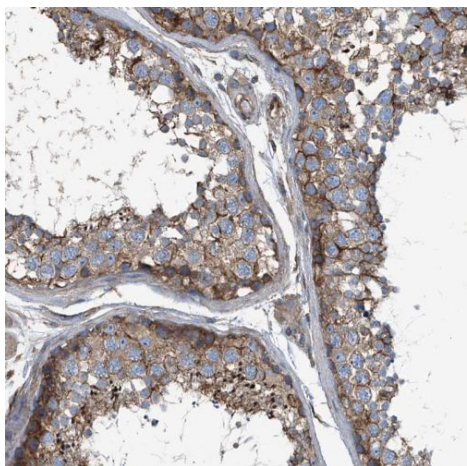
**Lane 5 :** Human tonsil tissue lysate

**Predicted band size:** 51 kDa



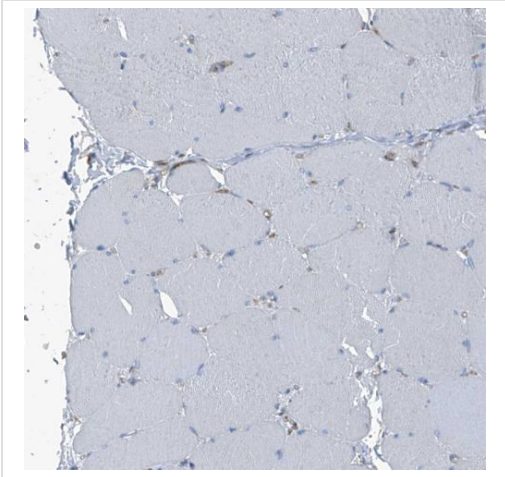
Paraffin-embedded human lymph node tissue stained for SEPT7 using ab244434 at 1/500 dilution in immunohistochemical analysis.

Immunohistochemistry (Formalin/PFA-fixed paraffin-embedded sections) - Anti-SEPT7 antibody (ab244434)



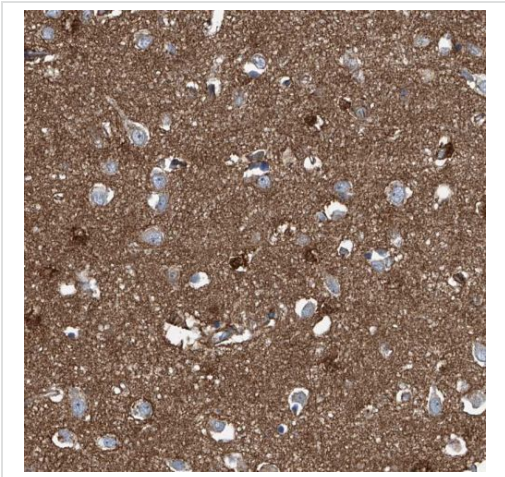
Paraffin-embedded human testis tissue stained for SEPT7 using ab244434 at 1/500 dilution in immunohistochemical analysis.

Immunohistochemistry (Formalin/PFA-fixed paraffin-embedded sections) - Anti-SEPT7 antibody (ab244434)



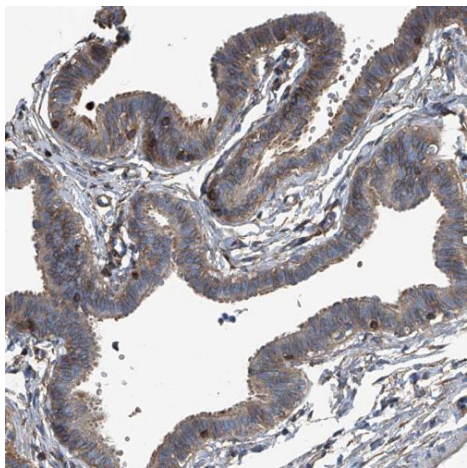
Paraffin-embedded human skeletal muscle tissue stained for SEPT7 using ab244434 at 1/500 dilution in immunohistochemical analysis. **No positivity in myocytes, as expected.**

Immunohistochemistry (Formalin/PFA-fixed paraffin-embedded sections) - Anti-SEPT7 antibody (ab244434)



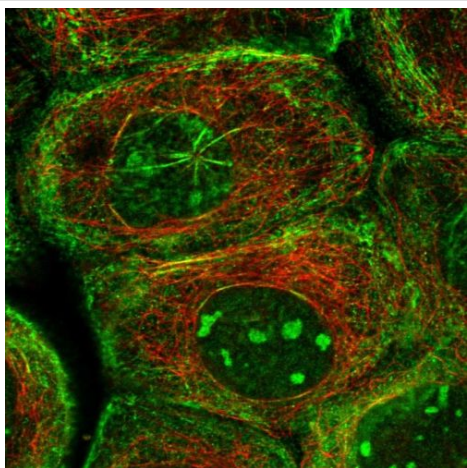
Paraffin-embedded human cerebral cortex tissue stained for SEPT7 using ab244434 at 1/500 dilution in immunohistochemical analysis.

Immunohistochemistry (Formalin/PFA-fixed paraffin-embedded sections) - Anti-SEPT7 antibody (ab244434)



Paraffin-embedded human fallopian tube tissue stained for SEPT7 using ab244434 at 1/500 dilution in immunohistochemical analysis.

Immunohistochemistry (Formalin/PFA-fixed paraffin-embedded sections) - Anti-SEPT7 antibody (ab244434)



PFA-fixed, Triton X-100 permeabilized A431 (human epidermoid carcinoma cell line) cells stained for SEPT7 (green) using ab244434 at 4 µg/ml in ICC/IF.

Immunocytochemistry/ Immunofluorescence - Anti-SEPT7 antibody (ab244434)

**Please note:** All products are "FOR RESEARCH USE ONLY. NOT FOR USE IN DIAGNOSTIC PROCEDURES"

### Our Abpromise to you: Quality guaranteed and expert technical support

---

- Replacement or refund for products not performing as stated on the datasheet
- Valid for 12 months from date of delivery
- Response to your inquiry within 24 hours
- We provide support in Chinese, English, French, German, Japanese and Spanish
- Extensive multi-media technical resources to help you
- We investigate all quality concerns to ensure our products perform to the highest standards

If the product does not perform as described on this datasheet, we will offer a refund or replacement. For full details of the Abpromise, please visit <https://www.abcam.com/abpromise> or contact our technical team.

## Terms and conditions

---

- Guarantee only valid for products bought direct from Abcam or one of our authorized distributors