


Product datasheet

Anti-SEPT7 antibody ab96126

1 Image

Overview

Product name	Anti-SEPT7 antibody
Description	Rabbit polyclonal to SEPT7
Host species	Rabbit
Tested applications	Suitable for: WB
Species reactivity	Reacts with: Human Predicted to work with: Mouse, Rat, Cow, Zebrafish 
Immunogen	Recombinant protein fragment containing a sequence corresponding to a region within amino acids 192-411 of Human SEPT7 (NP_001779)
Positive control	293T; A431; H1299; HeLaS3; HepG2; Molt 4 or Raji cell lysates

Properties

Form	Liquid
Storage instructions	Shipped at 4°C. Upon delivery aliquot and store at -20°C or -80°C. Avoid repeated freeze / thaw cycles.
Storage buffer	pH: 7.00 Preservative: 0.01% Thimerosal (merthiolate) Constituents: 1.21% Tris, 0.75% Glycine, 10% Glycerol (glycerin, glycerine)
Purity	Immunogen affinity purified
Clonality	Polyclonal
Isotype	IgG

Applications

Our [Abpromise guarantee](#) covers the use of **ab96126** in the following tested applications.

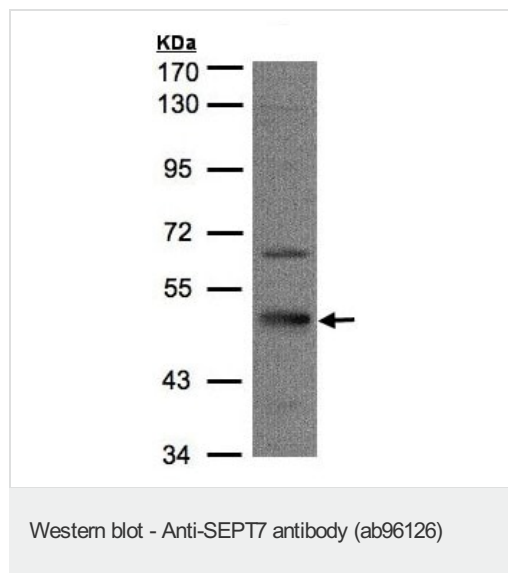
The application notes include recommended starting dilutions; optimal dilutions/concentrations should be determined by the end user.

Application	Abreviews	Notes
WB		1/500 - 1/3000. Predicted molecular weight: 51 kDa.

Target

Function	Filament-forming cytoskeletal GTPase. Required for normal organization of the actin cytoskeleton. Required for normal progress through mitosis. Involved in cytokinesis. Required for normal association of CENPE with the kinetochore. Plays a role in ciliogenesis and collective cell movements.
Tissue specificity	Widely expressed.
Sequence similarities	Belongs to the septin family.
Cellular localization	Cytoplasm. Chromosome > centromere > kinetochore. Cytoplasm > cytoskeleton > spindle. Cleavage furrow. Midbody. Cytoplasm > cytoskeleton > cilium axoneme. Distributed throughout the cytoplasm in prometaphase cells. Associated with the spindle during metaphase. Associated with the central spindle and at the cleavage furrow in anaphase cells. Detected at the midbody in telophase. Associated with actin stress fibers.

Images



Anti-SEPT7 antibody (ab96126) at 1/1000 dilution + HeLa S3 whole cell lysate at 30 µg

Predicted band size: 51 kDa

Gel concentration: 7.5%

Please note: All products are "FOR RESEARCH USE ONLY. NOT FOR USE IN DIAGNOSTIC PROCEDURES"

Our Abpromise to you: Quality guaranteed and expert technical support

- Replacement or refund for products not performing as stated on the datasheet
- Valid for 12 months from date of delivery
- Response to your inquiry within 24 hours
- We provide support in Chinese, English, French, German, Japanese and Spanish
- Extensive multi-media technical resources to help you
- We investigate all quality concerns to ensure our products perform to the highest standards

If the product does not perform as described on this datasheet, we will offer a refund or replacement. For full details of the Abpromise, please visit <https://www.abcam.com/abpromise> or contact our technical team.

Terms and conditions

- Guarantee only valid for products bought direct from Abcam or one of our authorized distributors