

Product datasheet

Anti-SERCA1 ATPase antibody [EPR7322] ab129104

Recombinant RabMAb

★★★★☆ 1 Abreviews 2 Images

Overview

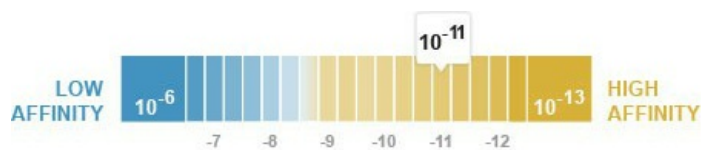
Product name	Anti-SERCA1 ATPase antibody [EPR7322]
Description	Rabbit monoclonal [EPR7322] to SERCA1 ATPase
Host species	Rabbit
Specificity	ab129104 can not recognize SERCA1A (ATP2A1A). ab129104 recognizes SERCA1B (ATP2A1B) only.
Tested applications	Suitable for: WB Unsuitable for: IHC-P or IP
Species reactivity	Reacts with: Mouse, Rat, Human
Immunogen	Synthetic peptide within Human SERCA1 ATPase aa 950-1050. The exact sequence is proprietary.
Positive control	Human fetal muscle, Rat muscle and Mouse muscle lysates.
General notes	

Our RabMAb[®] technology is a patented hybridoma-based technology for making rabbit monoclonal antibodies. For details on our patents, please refer to [RabMAb[®] patents](#).

This product is a [recombinant rabbit monoclonal antibody](#).

Properties

Form	Liquid
Storage instructions	Shipped at 4°C. Store at -20°C. Stable for 12 months at -20°C.
Dissociation constant (K_D)	K _D = 4.50 x 10 ⁻¹¹ M



[Learn more about K_D](#)

Storage buffer	pH: 7.20 Preservative: 0.01% Sodium azide
-----------------------	--

	Constituents: 9% PBS, 40% Glycerol, 0.05% BSA, 50% Tissue culture supernatant
Purity	Tissue culture supernatant
Clonality	Monoclonal
Clone number	EPR7322
Isotype	IgG

Applications

Our [Abpromise guarantee](#) covers the use of **ab129104** in the following tested applications.

The application notes include recommended starting dilutions; optimal dilutions/concentrations should be determined by the end user.

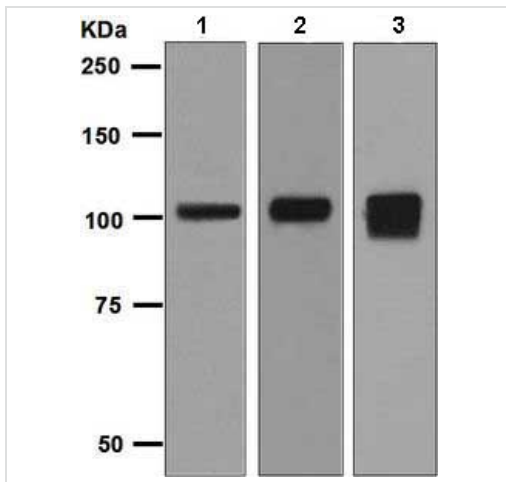
Application	Abreviews	Notes
WB	★★★★☆	1/1000 - 1/10000. Detects a band of approximately 100 kDa (predicted molecular weight: 110 kDa).

Application notes Is unsuitable for IHC-P or IP.

Target

Function	Key regulator of striated muscle performance by acting as the major Ca(2+) ATPase responsible for the reuptake of cytosolic Ca(2+) into the sarcoplasmic reticulum. Catalyzes the hydrolysis of ATP coupled with the translocation of calcium from the cytosol to the sarcoplasmic reticulum lumen. Contributes to calcium sequestration involved in muscular excitation/contraction.
Tissue specificity	Skeletal muscle, fast twitch muscle (type II) fibers.
Involvement in disease	Brody myopathy
Sequence similarities	Belongs to the cation transport ATPase (P-type) (TC 3.A.3) family. Type IIA subfamily.
Developmental stage	Isoform SERCA1A accounts for more than 99% of SERCA1 isoforms expressed in adult skeletal muscle, while isoform SERCA1B predominates in neo-natal skeletal muscle.
Cellular localization	Endoplasmic reticulum membrane. Sarcoplasmic reticulum membrane.

Images



Western blot - Anti-SERCA1 ATPase antibody [EPR7322] (ab129104)

All lanes : Anti-SERCA1 ATPase antibody [EPR7322] (ab129104)
at 1/1000 dilution

Lane 1 : Human fetal muscle lysate

Lane 2 : Rat muscle lysate

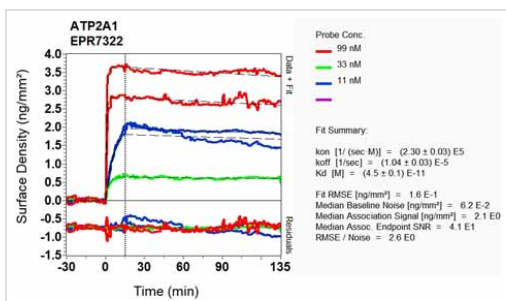
Lane 3 : Mouse muscle lysate

Lysates/proteins at 10 µg per lane.

Secondary

All lanes : Goat anti-Rabbit HRP at 1/2000 dilution

Predicted band size: 110 kDa



Other - Anti-SERCA1 ATPase antibody [EPR7322] (ab129104)

Equilibrium dissociation constant (K_D)

Learn more about K_D

[Click here to learn more about \$K_D\$](#)

Please note: All products are "FOR RESEARCH USE ONLY. NOT FOR USE IN DIAGNOSTIC PROCEDURES"

Our Abpromise to you: Quality guaranteed and expert technical support

- Replacement or refund for products not performing as stated on the datasheet
- Valid for 12 months from date of delivery
- Response to your inquiry within 24 hours
- We provide support in Chinese, English, French, German, Japanese and Spanish
- Extensive multi-media technical resources to help you
- We investigate all quality concerns to ensure our products perform to the highest standards

If the product does not perform as described on this datasheet, we will offer a refund or replacement. For full details of the Abpromise, please visit <https://www.abcam.com/abpromise> or contact our technical team.

Terms and conditions

- Guarantee only valid for products bought direct from Abcam or one of our authorized distributors