

Product datasheet

Anti-SerpinB2/PAI-2 antibody ab137588

1 References 3 Images

Overview

Product name	Anti-SerpinB2/PAI-2 antibody
Description	Rabbit polyclonal to SerpinB2/PAI-2
Host species	Rabbit
Tested applications	Suitable for: WB, IHC-P
Species reactivity	Reacts with: Mouse, Human
Immunogen	Recombinant fragment corresponding to Human SerpinB2/PAI-2 aa 78-408. Database link: P05120
Positive control	WB: Human A431 and mouse JC whole cell lysates. IHC-P: Human NCIN87 xenograft tissue.
General notes	Previously labelled as SerpinB2. The Life Science industry has been in the grips of a reproducibility crisis for a number of years. Abcam is leading the way in addressing this with our range of recombinant monoclonal antibodies and knockout edited cell lines for gold-standard validation. Please check that this product meets your needs before purchasing. If you have any questions, special requirements or concerns, please send us an inquiry and/or contact our Support team ahead of purchase. Recommended alternatives for this product can be found below, along with publications, customer reviews and Q&As

Properties

Form	Liquid
Storage instructions	Shipped at 4°C. Upon delivery aliquot. Store at -20°C or -80°C. Avoid freeze / thaw cycle.
Storage buffer	pH: 7.00 Preservative: 0.025% Proclin 300 Constituents: 79% PBS, 20% Glycerol (glycerin, glycerine)
Purity	Immunogen affinity purified
Clonality	Polyclonal
Isotype	IgG

Applications

The Abpromise guarantee

Our [Abpromise guarantee](#) covers the use of ab137588 in the following tested applications.

The application notes include recommended starting dilutions; optimal dilutions/concentrations should be determined by the end user.

Application	Abreviews	Notes
WB		1/500 - 1/3000. Predicted molecular weight: 47 kDa.
IHC-P		1/100 - 1/1000.

Target

Function

Inhibits urokinase-type plasminogen activator. The monocyte derived PAI-2 is distinct from the endothelial cell-derived PAI-1.

Sequence similarities

Belongs to the serpin family. Ov-serpin subfamily.

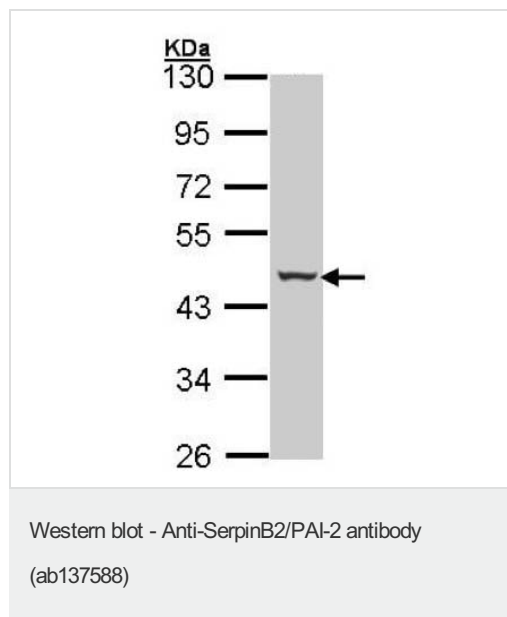
Post-translational modifications

The signal sequence is not cleaved.

Cellular localization

Cytoplasm. Secreted > extracellular space.

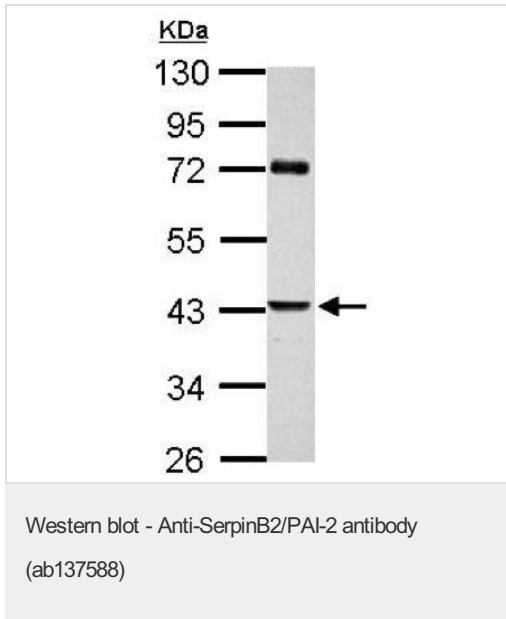
Images



Anti-SerpinB2/PAI-2 antibody (ab137588) at 1/1000 dilution + A431 whole cell lysate at 30 µg

Predicted band size: 47 kDa

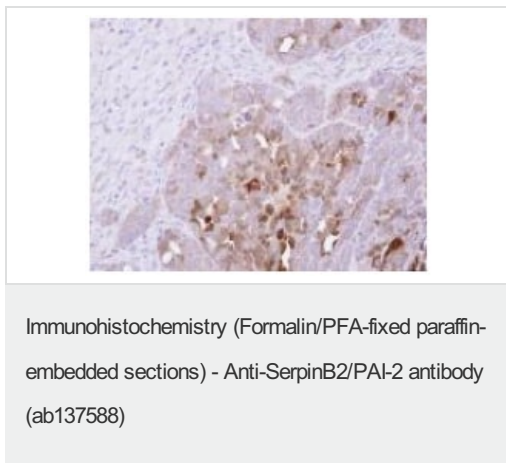
10% SDS PAGE



Anti-SerpinB2/PAI-2 antibody (ab137588) at 1/1000 dilution + JC whole cell lysate at 30 µg

Predicted band size: 47 kDa

10% SDS PAGE



Immunohistochemical analysis of paraffin embedded human NCIN87 xenograft tissue labeling SerpinB2/PAI-2 with ab137588 at 1/500 dilution.

Please note: All products are "FOR RESEARCH USE ONLY. NOT FOR USE IN DIAGNOSTIC PROCEDURES"

Our Abpromise to you: Quality guaranteed and expert technical support

- Replacement or refund for products not performing as stated on the datasheet
- Valid for 12 months from date of delivery
- Response to your inquiry within 24 hours
- We provide support in Chinese, English, French, German, Japanese and Spanish

- Extensive multi-media technical resources to help you
- We investigate all quality concerns to ensure our products perform to the highest standards

If the product does not perform as described on this datasheet, we will offer a refund or replacement. For full details of the Abpromise, please visit <https://www.abcam.com/abpromise> or contact our technical team.

Terms and conditions

- Guarantee only valid for products bought direct from Abcam or one of our authorized distributors