




Product datasheet

Anti-SerpinB6/CAP antibody ab230009

3 Images

Overview

| | |
|----------------------------|---|
| Product name | Anti-SerpinB6/CAP antibody |
| Description | Rabbit polyclonal to SerpinB6/CAP |
| Host species | Rabbit |
| Tested applications | Suitable for: IHC-P, WB |
| Species reactivity | Reacts with: Human Predicted to work with: Cynomolgus monkey, Orangutan  |
| Immunogen | Recombinant fragment corresponding to Human SerpinB6/CAP aa 180-300. Sequence: ENTEERLFKVSKNEEKPVQMMFKQSTFKKTYIGEIFTQLV LPYVGKELN MIIMLPDETTDLRTVEKELTYEKFVEWTRLDMMDEEEVEV SLPRFKLEES YDMESVLRNLGMTDAFELGKA Database link: P35237  Run BLAST with  Run BLAST with |
| Positive control | WB: HepG2 whole cell lysate; Human placenta lysate. IHC-P: Human pancreatic cancer and skeletal muscle tissues. |
| General notes | Product previously known as Anti-SerpinB6 antibody. Reproducibility is key to advancing scientific discovery and accelerating scientists' next breakthrough. Abcam is leading the way with our range of recombinant antibodies, knockout-validated antibodies and knockout cell lines, all of which support improved reproducibility. We are also planning to innovate the way in which we present recommended applications and species on our product datasheets, so that only applications & species that have been tested in our own labs, our suppliers or by selected trusted collaborators are covered by our Abpromise™ guarantee. In preparation for this, we have started to update the applications & species that this product is Abpromise guaranteed for. We are also updating the applications & species that this product has been “predicted to work with,” however this information is not covered by our Abpromise guarantee. Applications & species from publications and Abreviews that have not been tested in our own labs or in those of our suppliers are not covered by the Abpromise guarantee. |

Please check that this product meets your needs before purchasing. If you have any questions, special requirements or concerns, please send us an inquiry and/or contact our Support team ahead of purchase. Recommended alternatives for this product can be found below, as well as customer reviews and Q&As.

Properties

| | |
|-----------------------------|---|
| Form | Liquid |
| Storage instructions | Shipped at 4°C. Store at +4°C short term (1-2 weeks). Upon delivery aliquot. Store at -20°C long term. Avoid freeze / thaw cycle. |
| Storage buffer | pH: 7.30 Preservative: 0.02% Sodium azide Constituents: PBS, 50% Glycerol (glycerin, glycerine) |
| Purity | Immunogen affinity purified |
| Clonality | Polyclonal |
| Isotype | IgG |

Applications

Our [Abpromise guarantee](#) covers the use of **ab230009** in the following tested applications.

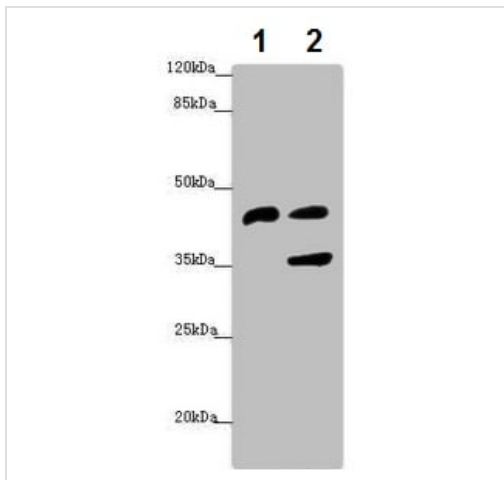
The application notes include recommended starting dilutions; optimal dilutions/concentrations should be determined by the end user.

| Application | Abreviews | Notes |
|-------------|-----------|--|
| IHC-P | | 1/20 - 1/200. |
| WB | | 1/1000 - 1/5000. Predicted molecular weight: 43 kDa. |

Target

| | |
|-------------------------------|--|
| Function | May be involved in the regulation of serine proteinases present in the brain or extravasated from the blood (By similarity). Inhibitor of cathepsin G, kallikrein-8 and thrombin. May play an important role in the inner ear in the protection against leakage of lysosomal content during stress and loss of this protection results in cell death and sensorineural hearing loss. |
| Tissue specificity | Expressed in keratinocytes (at protein level). Highest levels in skeletal muscle. Also found in placenta, cardiac muscle, lung, liver, kidney and pancreas. Expressed in the inner ear hair cells. Expressed abundantly by normal mast cells in different tissues and by mast cells in mastocytoma lesions. |
| Involvement in disease | Defects in SERPINB6 are the cause of deafness autosomal recessive type 91 (DFNB91) [MIM:613453]. It is a form of non-syndromic deafness characterized by progressive and age-dependent sensorineural hearing loss. Vestibular function is normal. |
| Sequence similarities | Belongs to the serpin family. Ov-serpin subfamily. |
| Cellular localization | Cytoplasm. |

Images



Western blot - Anti-SerpinB6/CAP antibody
(ab230009)

All lanes : Anti-SerpinB6/CAP antibody (ab230009) at 1/1000 dilution

Lane 1 : Human placenta lysate

Lane 2 : HepG2 (human liver hepatocellular carcinoma cell line) whole cell lysate

Secondary

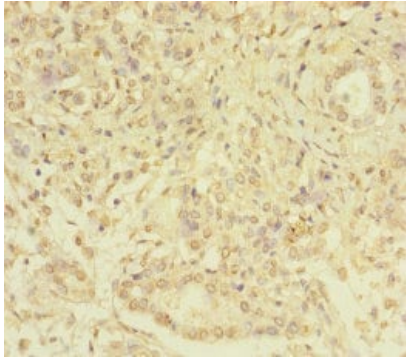
All lanes : Goat polyclonal to rabbit IgG at 1/10000 dilution

Predicted band size: 43 kDa



Immunohistochemistry (Formalin/PFA-fixed paraffin-embedded sections) - Anti-SerpinB6/CAP antibody
(ab230009)

Paraffin-embedded human skeletal muscle tissue stained for SerpinB6/CAP using ab230009 at 1/100 dilution in immunohistochemical analysis.



Paraffin-embedded human pancreatic cancer tissue stained for SerpinB6/CAP using ab230009 at 1/100 dilution in immunohistochemical analysis.

Immunohistochemistry (Formalin/PFA-fixed paraffin-embedded sections) - Anti-SerpinB6/CAP antibody (ab230009)

Please note: All products are "FOR RESEARCH USE ONLY. NOT FOR USE IN DIAGNOSTIC PROCEDURES"

Our Abpromise to you: Quality guaranteed and expert technical support

- Replacement or refund for products not performing as stated on the datasheet
- Valid for 12 months from date of delivery
- Response to your inquiry within 24 hours

- We provide support in Chinese, English, French, German, Japanese and Spanish
- Extensive multi-media technical resources to help you
- We investigate all quality concerns to ensure our products perform to the highest standards

If the product does not perform as described on this datasheet, we will offer a refund or replacement. For full details of the Abpromise, please visit <https://www.abcam.com/abpromise> or contact our technical team.

Terms and conditions

- Guarantee only valid for products bought direct from Abcam or one of our authorized distributors