

Product datasheet

Anti-SETD3 antibody ab174662

1 References 2 Images

Overview

<b>Product name</b>	Anti-SETD3 antibody
<b>Description</b>	Rabbit polyclonal to SETD3
<b>Host species</b>	Rabbit
<b>Tested applications</b>	<b>Suitable for:</b> WB, IP
<b>Species reactivity</b>	<b>Reacts with:</b> Human
<b>Immunogen</b>	Synthetic peptide within Human SETD3 aa 544-594. The exact sequence is proprietary. NP_115609.2 Sequence:  KAKATENGLVNGENSIPNGTRSEENESLNQESKRAVED AKGSSSDSTAGVK E  Database link: <a href="#">Q86TU7</a>
	<a href="#">Run BLAST with</a> <a href="#">Run BLAST with</a>
<b>Positive control</b>	Whole cell lysates from Jurkat, HeLa and 293T cells.

Properties

<b>Form</b>	Liquid
<b>Storage instructions</b>	Shipped at 4°C. Store at +4°C short term (1-2 weeks). Upon delivery aliquot. Store at -20°C long term. Avoid freeze / thaw cycle.
<b>Storage buffer</b>	Preservative: 0.09% Sodium azide Constituent: 99% Tris citrate/phosphate  pH 7-8
<b>Purity</b>	Immunogen affinity purified
<b>Purification notes</b>	ab174662 was affinity purified using an epitope specific to SETD3 immobilized on solid support.
<b>Clonality</b>	Polyclonal
<b>Isotype</b>	IgG

Applications

Our [Abpromise guarantee](#) covers the use of **ab174662** in the following tested applications.

The application notes include recommended starting dilutions; optimal dilutions/concentrations should be determined by the end user.

Application	Abreviews	Notes
WB		1/2000 - 1/10000. Predicted molecular weight: 67 kDa.
IP		Use at 2-10 µg/mg of lysate.

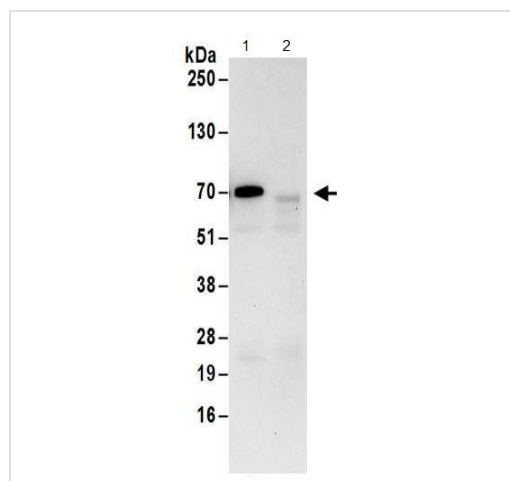
## Target

**Function** Histone methyltransferase that methylates 'Lys-36' of histone H3 (H3K36me). H3 'Lys-36' methylation represents a specific tag for epigenetic transcriptional activation.

**Sequence similarities** Belongs to the class V-like SAM-binding methyltransferase superfamily. Histone-lysine methyltransferase family. SETD3 subfamily. Contains 1 SET domain.

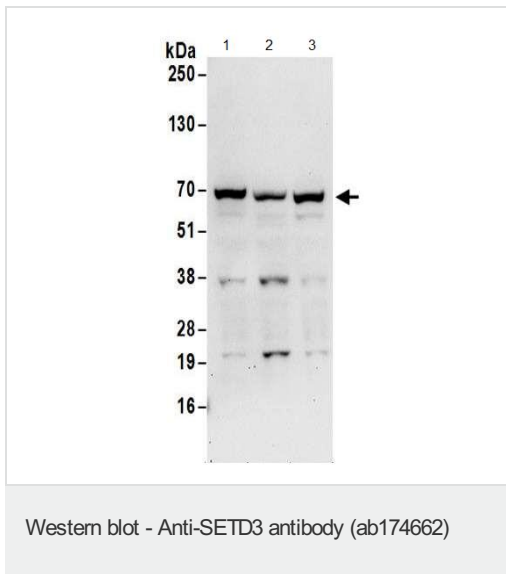
**Cellular localization** Nucleus.

## Images



Detection of SETD3 by Western Blot of Immunoprecipitate.

Immunoprecipitation - Anti-SETD3 antibody  
(ab174662)



**All lanes :** Anti-SETD3 antibody (ab174662) at 0.100000001490116 µg/ml

**Lane 1 :** Jurkat whole cell lysate

**Lane 2 :** HeLa whole cell lysate

**Lane 3 :** 293T whole cell lysate

Lysates/proteins at 50 µg per lane.

Developed using the ECL technique.

**Predicted band size:** 67 kDa

**Exposure time:** 30 seconds

**Please note:** All products are "FOR RESEARCH USE ONLY AND ARE NOT INTENDED FOR DIAGNOSTIC OR THERAPEUTIC USE"

### Our Abpromise to you: Quality guaranteed and expert technical support

- Replacement or refund for products not performing as stated on the datasheet
- Valid for 12 months from date of delivery
- Response to your inquiry within 24 hours
- We provide support in Chinese, English, French, German, Japanese and Spanish
- Extensive multi-media technical resources to help you
- We investigate all quality concerns to ensure our products perform to the highest standards

If the product does not perform as described on this datasheet, we will offer a refund or replacement. For full details of the Abpromise, please visit <https://www.abcam.com/abpromise> or contact our technical team.

### Terms and conditions

- Guarantee only valid for products bought direct from Abcam or one of our authorized distributors