

## Product datasheet

# Anti-Sez6 antibody ab121347

★★★★☆ 1 Abreviews 2 Images

### Overview

<b>Product name</b>	Anti-Sez6 antibody
<b>Description</b>	Rabbit polyclonal to Sez6
<b>Host species</b>	Rabbit
<b>Tested applications</b>	<b>Suitable for:</b> IHC-P
<b>Species reactivity</b>	<b>Reacts with:</b> Mouse, Human <b>Predicted to work with:</b> Cow
<b>Immunogen</b>	Recombinant fragment corresponding to amino acids 774-897 of Human Sez6 (UniProt: Q53EL9).
<b>Positive control</b>	Human hippocampus tissue and plasma.

### Properties

<b>Form</b>	Liquid
<b>Storage instructions</b>	Shipped at 4°C. Upon delivery aliquot and store at -20°C. Avoid repeated freeze / thaw cycles.
<b>Storage buffer</b>	pH: 7.20 Preservative: 0.02% Sodium azide Constituents: 59% PBS, 40% Glycerol
<b>Purity</b>	Immunogen affinity purified
<b>Clonality</b>	Polyclonal
<b>Isotype</b>	IgG

### Applications

Our [Abpromise guarantee](#) covers the use of **ab121347** in the following tested applications.

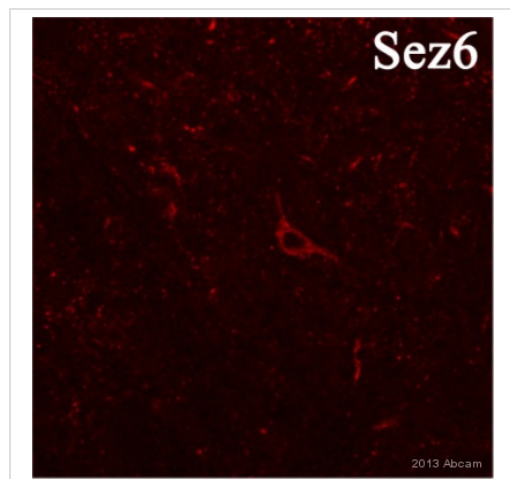
The application notes include recommended starting dilutions; optimal dilutions/concentrations should be determined by the end user.

Application	Abreviews	Notes
IHC-P	★★★★☆	1/50 - 1/200. Perform heat mediated antigen retrieval with citrate buffer pH 6 before commencing with IHC staining protocol.

## Target

<b>Function</b>	May play a role in cell-cell recognition and in neuronal membrane signaling. Seems to be important for the achievement of the necessary balance between dendrite elongation and branching during the elaboration of a complex dendritic arbor. Involved in the development of appropriate excitatory synaptic connectivity.
<b>Sequence similarities</b>	Belongs to the SEZ6 family. Contains 2 CUB domains. Contains 5 Sushi (CCP/SCR) domains.
<b>Post-translational modifications</b>	Glycosylated.
<b>Cellular localization</b>	Cell membrane. Localized on dendrites and in the synaptic and postsynaptic fraction.

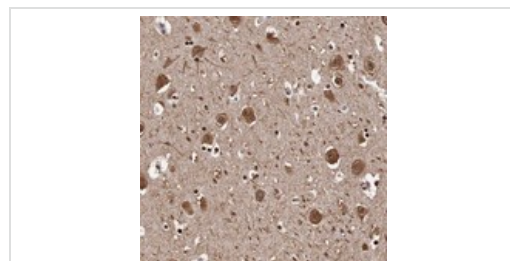
## Images



ab121347 staining Sez6 in Mouse brain tissue sections by Immunohistochemistry (IHC-P - paraformaldehyde-fixed, paraffin-embedded sections). Tissue was fixed with paraformaldehyde and blocked with 4% serum for 1 hour at 4°C; antigen retrieval used 0.1% NaBH<sub>4</sub>. Samples were incubated with primary antibody (undiluted) for 24 hours at 4°C. An undiluted Cy3®-conjugated Goat anti-rabbit IgG polyclonal was used as the secondary antibody.

Immunohistochemistry (Formalin/PFA-fixed paraffin-embedded sections) - Anti-Sez6 antibody (ab121347)

This image is courtesy of an Abreview submitted by Hyun Jin Kim



ab121347, at 1/25, staining Sez6 in paraffin-embedded Human Hippocampus tissue by Immunohistochemistry.

Immunohistochemistry (Formalin/PFA-fixed paraffin-embedded sections) - Anti-Sez6 antibody (ab121347)

**Please note:** All products are "FOR RESEARCH USE ONLY. NOT FOR USE IN DIAGNOSTIC PROCEDURES"

## **Our Abpromise to you: Quality guaranteed and expert technical support**

---

- Replacement or refund for products not performing as stated on the datasheet
- Valid for 12 months from date of delivery
- Response to your inquiry within 24 hours
  
- We provide support in Chinese, English, French, German, Japanese and Spanish
- Extensive multi-media technical resources to help you
- We investigate all quality concerns to ensure our products perform to the highest standards

If the product does not perform as described on this datasheet, we will offer a refund or replacement. For full details of the Abpromise, please visit <https://www.abcam.com/abpromise> or contact our technical team.

## **Terms and conditions**

---

- Guarantee only valid for products bought direct from Abcam or one of our authorized distributors