

## Product datasheet

# Anti-SF3B1 antibody [EPR11986] ab172634

Recombinant RabMAb

★ ★ ★ ★ ★ 1 Abreviews 3 References 5 Images

### Overview

<b>Product name</b>	Anti-SF3B1 antibody [EPR11986]
<b>Description</b>	Rabbit monoclonal [EPR11986] to SF3B1
<b>Host species</b>	Rabbit
<b>Tested applications</b>	<b>Suitable for:</b> IHC-P, WB, ICC/IF, Flow Cyt <b>Unsuitable for:</b> IP
<b>Species reactivity</b>	<b>Reacts with:</b> Mouse, Rat, Human
<b>Immunogen</b>	Synthetic peptide within Human SF3B1 aa 1-100 (Cysteine residue). The exact sequence is proprietary. Database link: <a href="#">O75533</a>
<b>Positive control</b>	WB: HeLa, Jurkat, K562 and Ramos cell lysates. IHC-P: Human colon and glioma tissues. ICC/IF: HeLa cells. Flow Cyt: HeLa cells.
<b>General notes</b>	Our RabMAb <sup>®</sup> technology is a patented hybridoma-based technology for making rabbit monoclonal antibodies. For details on our patents, please refer to <a href="#">RabMAb<sup>®</sup> patents</a> .  This product is a <a href="#">recombinant rabbit monoclonal antibody</a> .

### Properties

<b>Form</b>	Liquid
<b>Storage instructions</b>	Shipped at 4°C. Store at +4°C short term (1-2 weeks). Upon delivery aliquot. Store at -20°C long term. Avoid freeze / thaw cycle.
<b>Storage buffer</b>	pH: 7.20 Preservative: 0.01% Sodium azide Constituents: 9% PBS, 40% Glycerol, 0.05% BSA, 50% Tissue culture supernatant
<b>Purity</b>	Tissue culture supernatant
<b>Clonality</b>	Monoclonal
<b>Clone number</b>	EPR11986
<b>Isotype</b>	IgG

### Applications

## Applications

Our [Abpromise guarantee](#) covers the use of **ab172634** in the following tested applications.

The application notes include recommended starting dilutions; optimal dilutions/concentrations should be determined by the end user.

Application	Abreviews	Notes
IHC-P		1/100 - 1/250. Perform heat mediated antigen retrieval with citrate buffer pH 6 before commencing with IHC staining protocol.
WB		1/1000 - 1/10000. Predicted molecular weight: 146 kDa.
ICC/IF		1/250 - 1/500.
Flow Cyt		1/2000.

**Application notes** Is unsuitable for IP.

## Target

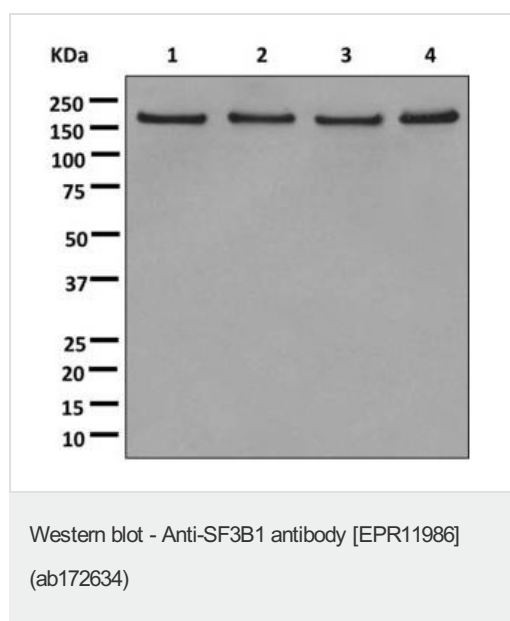
### Relevance

SF3B1 is subunit 1 of the splicing factor 3b protein complex. Splicing factor 3b, together with splicing factor 3a and a 12S RNA unit, forms the U2 small nuclear ribonucleoproteins complex (U2 snRNP). The splicing factor 3b/3a complex binds pre-mRNA upstream of the intron's branch site in a sequence independent manner and may anchor the U2 snRNP to the pre-mRNA. Splicing factor 3b is also a component of the minor U12-type spliceosome. The carboxy-terminal two-thirds of subunit 1 have 22 non-identical, tandem HEAT repeats that form rod-like, helical structures.

### Cellular localization

Nucleus speckle. Note=During mitosis, transiently dispersed from the nuclear speckles to the cytoplasm.

## Images



**All lanes** : Anti-SF3B1 antibody [EPR11986] (ab172634) at 1/1000 dilution

**Lane 1** : HeLa lysate

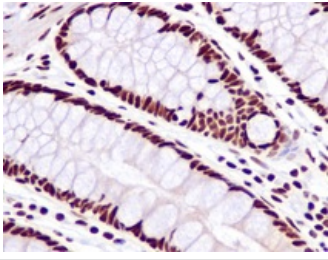
**Lane 2** : Jurkat lysate

**Lane 3** : K562 lysate

**Lane 4** : Ramos lysate

Lysates/proteins at 10 µg per lane.

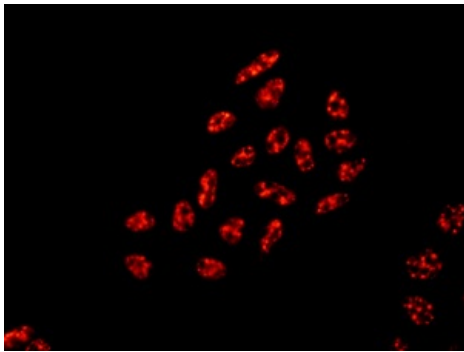
**Predicted band size:** 146 kDa



Immunohistochemistry (Formalin/PFA-fixed paraffin-embedded sections) - Anti-SF3B1 antibody [EPR11986] (ab172634)

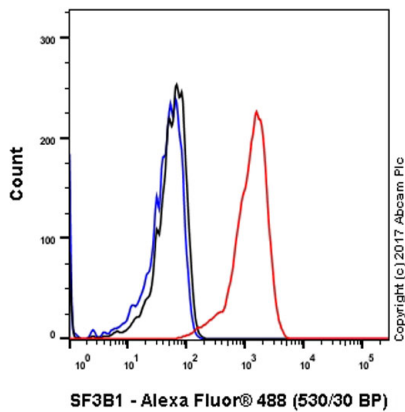
Immunohistochemical analysis of Formalin-fixed, paraffin-embedded Human colon tissue labeling SF3B1 with ab172634 at 1/100 dilution.

Perform heat mediated antigen retrieval with citrate buffer pH 6 before commencing with IHC staining protocol.



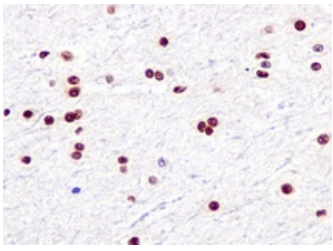
Immunocytochemistry/ Immunofluorescence - Anti-SF3B1 antibody [EPR11986] (ab172634)

Immunofluorescence analysis of HeLa cells labeling SF3B1 with ab172634 at 1/250 dilution.



Flow Cytometry - Anti-SF3B1 antibody [EPR11986] (ab172634)

Flow cytometry analysis of HeLa (human cervix adenocarcinoma) cells labeling SF3B1 (red) with ab172634 at a 1/2000 dilution. Cells were fixed with 4% paraformaldehyde and permeabilized with 90% methanol. A goat anti-rabbit IgG (Alexa Fluor® 488) (ab150077) was used as the secondary antibody at a 1/2000 dilution. Black - Rabbit monoclonal IgG (ab172730). Blue (unlabeled control) - Cells without incubation with the primary and secondary antibodies.



Immunohistochemistry (Formalin/PFA-fixed paraffin-embedded sections) - Anti-SF3B1 antibody [EPR11986] (ab172634)

Immunohistochemical analysis of Formalin-fixed, paraffin-embedded Human glioma tissue labeling SF3B1 with ab172634 at 1/100 dilution.

Perform heat mediated antigen retrieval with citrate buffer pH 6 before commencing with IHC staining protocol.

**Please note:** All products are "FOR RESEARCH USE ONLY. NOT FOR USE IN DIAGNOSTIC PROCEDURES"

### Our Abpromise to you: Quality guaranteed and expert technical support

---

- Replacement or refund for products not performing as stated on the datasheet
- Valid for 12 months from date of delivery
- Response to your inquiry within 24 hours
- We provide support in Chinese, English, French, German, Japanese and Spanish
- Extensive multi-media technical resources to help you
- We investigate all quality concerns to ensure our products perform to the highest standards

If the product does not perform as described on this datasheet, we will offer a refund or replacement. For full details of the Abpromise, please visit <https://www.abcam.com/abpromise> or contact our technical team.

### Terms and conditions

---

- Guarantee only valid for products bought direct from Abcam or one of our authorized distributors