




Product datasheet

Anti-SFRP5 antibody ab230425

2 Images

Overview

| | |
|----------------------------|---|
| Product name | Anti-SFRP5 antibody |
| Description | Rabbit polyclonal to SFRP5 |
| Host species | Rabbit |
| Tested applications | Suitable for: WB, IHC-P |
| Species reactivity | Reacts with: Mouse, Human Predicted to work with: Cow  |
| Immunogen | Synthetic peptide within Human SFRP5 aa 190-219 (internal sequence) conjugated to keyhole limpet haemocyanin. The exact sequence is proprietary. Sequence: ADGLMEQMCSSDFVVKMRIKEIKIENGDRK Database link: Q5T4F7  Run BLAST with  Run BLAST with |
| Positive control | WB: Mouse heart tissue lysate. IHC-P: Human colon tissue. |

Properties

| | |
|-----------------------------|---|
| Form | Liquid |
| Storage instructions | Shipped at 4°C. Store at +4°C short term (1-2 weeks). Upon delivery aliquot. Store at -20°C long term. Avoid freeze / thaw cycle. |
| Storage buffer | Preservative: 0.09% Sodium azide Constituent: PBS |
| Purity | Immunogen affinity purified |
| Clonality | Polyclonal |
| Isotype | IgG |

Applications

Our [Abpromise guarantee](#) covers the use of **ab230425** in the following tested applications.

The application notes include recommended starting dilutions; optimal dilutions/concentrations should be determined by the end user.

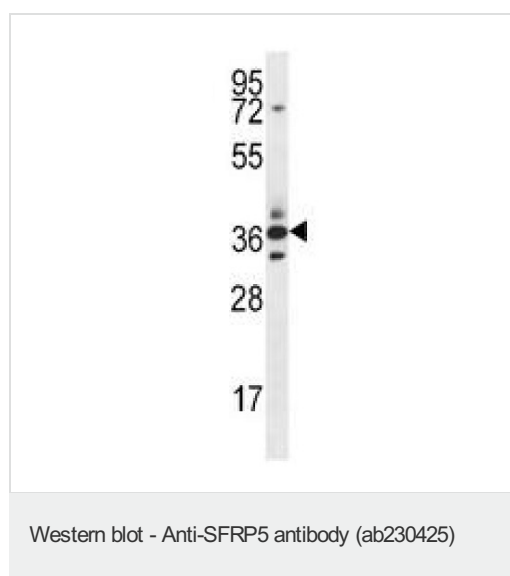
| Application | Abreviews | Notes |
|-------------|-----------|---|
| WB | | 1/1000. Predicted molecular weight: 36 kDa. |
| IHC-P | | Use a concentration of 5 µg/ml. Perform heat mediated antigen retrieval before commencing with IHC staining protocol. |

Target

Relevance Secreted frizzled-related protein 5 (SFRP5) is a member of the SFRP family that contains a cysteine-rich domain homologous to the putative Wnt-binding site of Frizzled proteins. SFRPs act as soluble modulators of Wnt signaling. SFRP5 and SFRP1 may be involved in determining the polarity of photoreceptor cells in the retina. SFRP5 is highly expressed in the retinal pigment epithelium, and moderately expressed in the pancreas.

Cellular localization Secreted

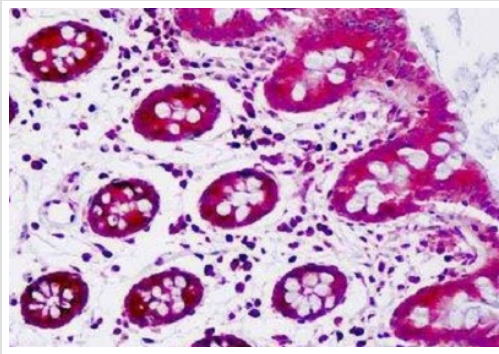
Images



Anti-SFRP5 antibody (ab230425) at 1/1000 dilution + mouse heart tissue lysate at 35 µg

Developed using the ECL technique.

Predicted band size: 36 kDa



Formalin-fixed, paraffin-embedded human colon tissue stained for SFRP5 with ab230425 at 5 µg/ml in immunohistochemical analysis.

Immunohistochemistry (Formalin/PFA-fixed paraffin-embedded sections) - Anti-SFRP5 antibody (ab230425)

Please note: All products are "FOR RESEARCH USE ONLY. NOT FOR USE IN DIAGNOSTIC PROCEDURES"

Our Abpromise to you: Quality guaranteed and expert technical support

- Replacement or refund for products not performing as stated on the datasheet
- Valid for 12 months from date of delivery
- Response to your inquiry within 24 hours
- We provide support in Chinese, English, French, German, Japanese and Spanish
- Extensive multi-media technical resources to help you
- We investigate all quality concerns to ensure our products perform to the highest standards

If the product does not perform as described on this datasheet, we will offer a refund or replacement. For full details of the Abpromise, please visit <https://www.abcam.com/abpromise> or contact our technical team.

Terms and conditions

- Guarantee only valid for products bought direct from Abcam or one of our authorized distributors