

Product datasheet

Anti-SH2D1A/SAP antibody [EPR3168] ab109120

Recombinant RabMAb

4 Images

Overview

Product name	Anti-SH2D1A/SAP antibody [EPR3168]
Description	Rabbit monoclonal [EPR3168] to SH2D1A/SAP
Host species	Rabbit
Tested applications	Suitable for: WB Unsuitable for: Flow Cyt, ICC/IF or IHC-P
Species reactivity	Reacts with: Mouse, Rat, Human
Immunogen	Synthetic peptide. This information is proprietary to Abcam and/or its suppliers.
Positive control	WB: Molt-4, Jurkat, PC-12 and K562 cell lysates and mouse brain tissue lysate.
General notes	<p>This product is a recombinant monoclonal antibody, which offers several advantages including:</p> <ul style="list-style-type: none"> - High batch-to-batch consistency and reproducibility - Improved sensitivity and specificity - Long-term security of supply - Animal-free production <p>For more information see here.</p> <p>Our RabMAb[®] technology is a patented hybridoma-based technology for making rabbit monoclonal antibodies. For details on our patents, please refer to RabMAb[®] patents.</p> <p>We are constantly working hard to ensure we provide our customers with best in class antibodies. As a result of this work we are pleased to now offer this antibody in purified format. We are in the process of updating our datasheets. The purified format is designated 'PUR' on our product labels. If you have any questions regarding this update, please contact our Scientific Support team.</p>

Properties

Form	Liquid
Storage instructions	Shipped at 4°C. Store at +4°C short term (1-2 weeks). Upon delivery aliquot. Store at -20°C. Stable for 12 months at -20°C.
Storage buffer	pH: 7.20 Preservative: 0.01% Sodium azide Constituents: 40% Glycerol (glycerin, glycerine), 59% PBS, 0.05% BSA

Purity	Protein A purified
Clonality	Monoclonal
Clone number	EPR3168
Isotype	IgG

Applications

The Abpromise guarantee Our [Abpromise guarantee](#) covers the use of ab109120 in the following tested applications. The application notes include recommended starting dilutions; optimal dilutions/concentrations should be determined by the end user.

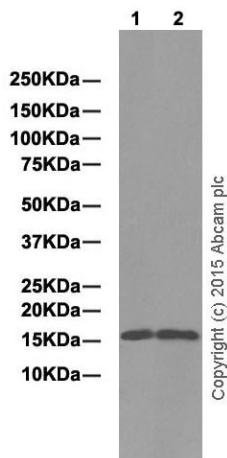
Application	Abreviews	Notes
WB		1/1000 - 1/10000. Detects a band of approximately 16 kDa (predicted molecular weight: 14 kDa).

Application notes Is unsuitable for Flow Cyt, ICC/IF or IHC-P.

Target

Function	Inhibitor of the SLAM self-association. Acts by blocking recruitment of the SH2-domain-containing signal-transduction molecule SHP-2 to a docking site in the SLAM cytoplasmic region. Mediates interaction between FYN and SLAMF1. May also regulate the activity of the neurotrophin receptors NTRK1, NTRK2 and NTRK3.
Tissue specificity	Expressed at a high level in thymus and lung, with a lower level of expression in spleen and liver. Expressed in peripheral blood leukocytes, including T lymphocytes. Tends to be expressed at lower levels in peripheral blood leukocytes in patients with rheumatoid arthritis.
Involvement in disease	Defects in SH2D1A are a cause of lymphoproliferative syndrome X-linked type 1 (XLP1) [MIM:308240]; also known as X-linked lymphoproliferative disease (XLPD) or Duncan disease. XLP is a rare immunodeficiency characterized by extreme susceptibility to infection with Epstein-Barr virus (EBV). Symptoms include severe or fatal mononucleosis, acquired hypogammaglobulinemia, pancytopenia and malignant lymphoma.
Sequence similarities	Contains 1 SH2 domain.
Cellular localization	Cytoplasm.

Images



Western blot - Anti-SH2D1A/SAP antibody
[EPR3168] (ab109120)

All lanes : Anti-SH2D1A/SAP antibody [EPR3168] (ab109120) at 1/2000 dilution (purified)

Lane 1 : PC-12 whole cell lysate

Lane 2 : Mouse brain tissue lysate

Lysates/proteins at 10 µg per lane.

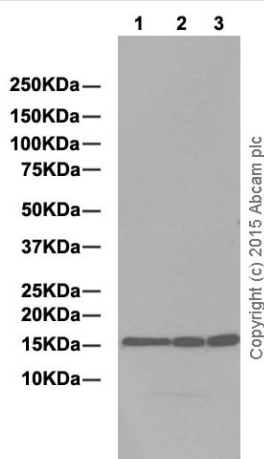
Secondary

All lanes : Goat Anti-Rabbit IgG H&L (HRP) (ab97051) at 1/50000 dilution

Predicted band size: 14 kDa

Observed band size: 16 kDa

Blocking and dilution buffer: 5% NFDm/TBST.



Western blot - Anti-SH2D1A/SAP antibody
[EPR3168] (ab109120)

All lanes : Anti-SH2D1A/SAP antibody [EPR3168] (ab109120) at 1/2000 dilution (purified)

Lane 1 : Molt-4 whole cell lysate

Lane 2 : Jurkat whole cell lysate

Lane 3 : K562 whole cell lysate

Lysates/proteins at 10 µg per lane.

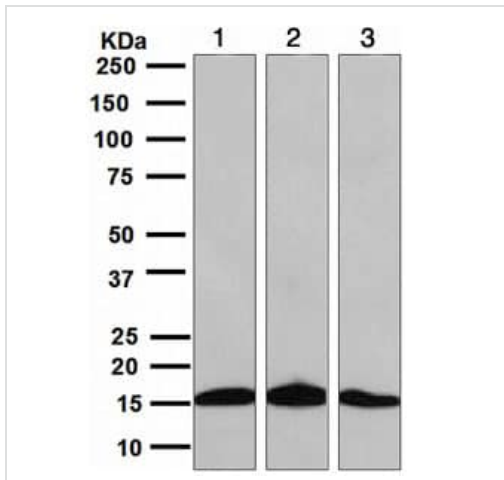
Secondary

All lanes : Goat Anti-Rabbit IgG H&L (HRP) (ab97051) at 1/50000 dilution

Predicted band size: 14 kDa

Observed band size: 16 kDa

Blocking and dilution buffer: 5% NFDM/TBST.



Western blot - Anti-SH2D1A/SAP antibody
[EPR3168] (ab109120)

All lanes : Anti-SH2D1A/SAP antibody [EPR3168] (ab109120) at
1/1000 dilution (unpurified)

Lane 1 : MOLT-4 cell line lysate

Lane 2 : Jurkat cell line lysate

Lane 3 : K562 cell line lysate

Lysates/proteins at 10 µg per lane.

Predicted band size: 14 kDa

Why choose a recombinant antibody?



**Research with
confidence**
Consistent and
reproducible results



**Long-term and
scalable supply**
Recombinant
technology



**Success from the
first experiment**
Confirmed
specificity



**Ethical standards
compliant**
Animal-free
production

Anti-SH2D1A/SAP antibody [EPR3168] (ab109120)

Please note: All products are "FOR RESEARCH USE ONLY. NOT FOR USE IN DIAGNOSTIC PROCEDURES"

Our Abpromise to you: Quality guaranteed and expert technical support

- Replacement or refund for products not performing as stated on the datasheet
- Valid for 12 months from date of delivery
- Response to your inquiry within 24 hours
- We provide support in Chinese, English, French, German, Japanese and Spanish
- Extensive multi-media technical resources to help you
- We investigate all quality concerns to ensure our products perform to the highest standards

If the product does not perform as described on this datasheet, we will offer a refund or replacement. For full details of the Abpromise, please visit <https://www.abcam.com/abpromise> or contact our technical team.

Terms and conditions

- Guarantee only valid for products bought direct from Abcam or one of our authorized distributors