



Product datasheet

Anti-SH2D3A antibody ab224154

5 Images

Overview

| | |
|----------------------------|----------------------------------------------------------------------------------------------------------------------------------------------------------------------------------------------------------------------------------------------------------------------------------------------------------------------------------------------------------------------------------------------------------------------------------------------------------------------------------------------------------------------------------------------------|
| Product name | Anti-SH2D3A antibody |
| Description | Rabbit polyclonal to SH2D3A |
| Host species | Rabbit |
| Tested applications | Suitable for: WB, IHC-P |
| Species reactivity | Reacts with: Human |
| Immunogen | <p>Recombinant fragment corresponding to Human SH2D3A aa 136-228. Sequence:</p> <p>IEPLRARKWSNSQPADLAHMGRSREDPAGMEASTMPISA LPR TSSDPVLL KAPAPLGTVADSLRASDGQLQAKAPTKPPRTPSFELPDA SERP</p> <p>Database link: Q9BRG2</p> <p style="text-align: right;">  Run BLAST with  Run BLAST with </p> |

Positive control WB: RT4 cell lysate. IHC-P: Human Fallopian tube, skin and small intestine tissue.

General notes

Reproducibility is key to advancing scientific discovery and accelerating scientists' next breakthrough.

Abcam is leading the way with our range of recombinant antibodies, knockout-validated antibodies and knockout cell lines, all of which support improved reproducibility.

We are also planning to innovate the way in which we present recommended applications and species on our product datasheets, so that only applications & species that have been tested in our own labs, our suppliers or by selected trusted collaborators are covered by our Abpromise™ guarantee.

In preparation for this, we have started to update the applications & species that this product is Abpromise guaranteed for.

We are also updating the applications & species that this product has been “predicted to work with,” however this information is not covered by our Abpromise guarantee.

Applications & species from publications and Abreviews that have not been tested in our own labs or in those of our suppliers are not covered by the Abpromise guarantee.

Please check that this product meets your needs before purchasing. If you have any questions, special requirements or concerns, please send us an inquiry and/or contact our Support team ahead of purchase. Recommended alternatives for this product can be found below, as well as

customer reviews and Q&As.

Properties

| | |
|-----------------------------|-----------------------------------------------------------------------------------------------------------------------------------|
| Form | Liquid |
| Storage instructions | Shipped at 4°C. Store at +4°C short term (1-2 weeks). Upon delivery aliquot. Store at -20°C long term. Avoid freeze / thaw cycle. |
| Storage buffer | pH: 7.20 Preservative: 0.02% Sodium azide Constituents: 40% Glycerol (glycerin, glycerine), PBS |
| Purity | Immunogen affinity purified |
| Clonality | Polyclonal |
| Isotype | IgG |

Applications

Our [Abpromise guarantee](#) covers the use of **ab224154** in the following tested applications.

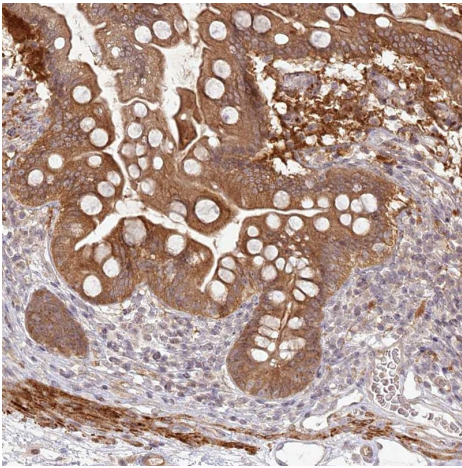
The application notes include recommended starting dilutions; optimal dilutions/concentrations should be determined by the end user.

| Application | Abreviews | Notes |
|-------------|-----------|-----------------------------------------------------------------------------------------------------------------------------|
| WB | | Use a concentration of 0.04 - 0.4 µg/ml. Predicted molecular weight: 52,63 kDa. |
| IHC-P | | 1/20 - 1/50. Perform heat mediated antigen retrieval with citrate buffer pH 6 before commencing with IHC staining protocol. |

Target

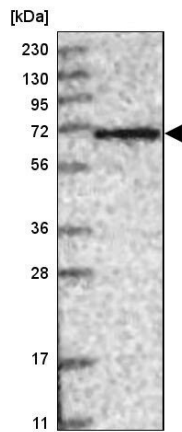
| | |
|-----------------------------------------|------------------------------------------------------------------------------------------------------|
| Function | May play a role in JNK activation. |
| Tissue specificity | Weakly expressed in placenta, fetal kidney, fetal lung, adult pancreas, adult kidney and adult lung. |
| Sequence similarities | Contains 1 SH2 domain. |
| Post-translational modifications | Phosphorylated on tyrosine. |

Images



Immunohistochemistry (Formalin/PFA-fixed paraffin-embedded sections) - Anti-SH2D3A antibody (ab224154)

Immunohistochemical analysis of Formalin/PFA-fixed paraffin-embedded sections human small intestine tissue labeling SH2D3A with ab224154 at 1/20. Antigen retrieval was heat mediated with citrate buffer pH 6 before commencing with IHC staining protocol.

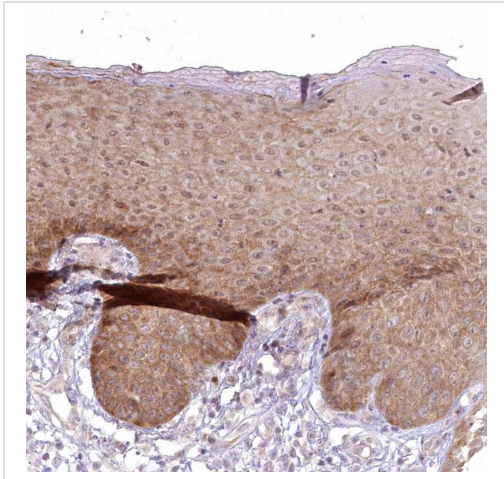


Western blot - Anti-SH2D3A antibody (ab224154)

Anti-SH2D3A antibody (ab224154) at 1/100 dilution + RT4 (human urinary bladder cancer cell line) cell lysate

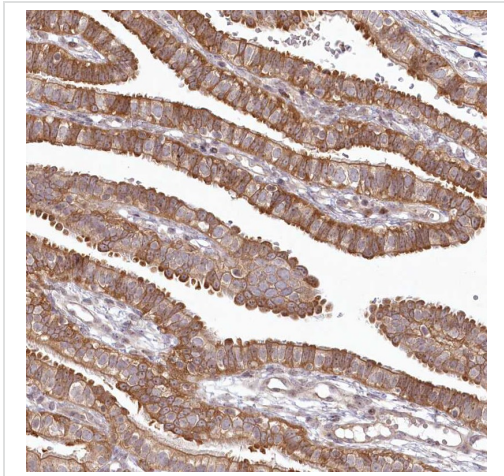
Developed using the ECL technique.

Predicted band size: 52,63 kDa



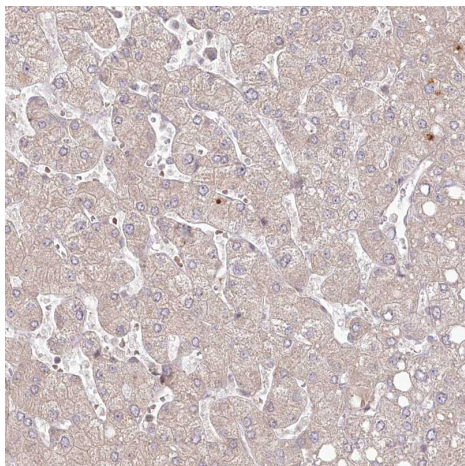
Immunohistochemistry (Formalin/PFA-fixed paraffin-embedded sections) - Anti-SH2D3A antibody (ab224154)

Immunohistochemical analysis of Formalin/PFA-fixed paraffin-embedded sections human skin tissue labeling SH2D3A with ab224154 at 1/20. Antigen retrieval was heat mediated with citrate buffer pH 6 before commencing with IHC staining protocol.



Immunohistochemistry (Formalin/PFA-fixed paraffin-embedded sections) - Anti-SH2D3A antibody (ab224154)

Immunohistochemical analysis of Formalin/PFA-fixed paraffin-embedded sections human Fallopian tube tissue labeling SH2D3A with ab224154 at 1/20. Antigen retrieval was heat mediated with citrate buffer pH 6 before commencing with IHC staining protocol.



Immunohistochemical analysis of Formalin/PFA-fixed paraffin-embedded sections human liver tissue labeling SH2D3A with ab224154 at 1/20. Antigen retrieval was heat mediated with citrate buffer pH 6 before commencing with IHC staining protocol.

Immunohistochemistry (Formalin/PFA-fixed paraffin-embedded sections) - Anti-SH2D3A antibody (ab224154)

Please note: All products are "FOR RESEARCH USE ONLY. NOT FOR USE IN DIAGNOSTIC PROCEDURES"

Our Abpromise to you: Quality guaranteed and expert technical support

- Replacement or refund for products not performing as stated on the datasheet
- Valid for 12 months from date of delivery
- Response to your inquiry within 24 hours
- We provide support in Chinese, English, French, German, Japanese and Spanish
- Extensive multi-media technical resources to help you
- We investigate all quality concerns to ensure our products perform to the highest standards

If the product does not perform as described on this datasheet, we will offer a refund or replacement. For full details of the Abpromise, please visit <https://www.abcam.com/abpromise> or contact our technical team.

Terms and conditions

- Guarantee only valid for products bought direct from Abcam or one of our authorized distributors