

## Product datasheet

# Anti-SH3BP4 antibody ab106609

2 Images

### Overview

---

|                            |   |
|----------------------------|---|
| <b>Product name</b>        | Anti-SH3BP4 antibody  |
| <b>Description</b>         | Rabbit polyclonal to SH3BP4   |
| <b>Host species</b>        | Rabbit  |
| <b>Tested applications</b> | <b>Suitable for:</b> WB, IHC-P  |
| <b>Species reactivity</b>  | <b>Reacts with:</b> Mouse, Rat, Human   |
| <b>Immunogen</b>           | Synthetic peptide corresponding to 18 amino acids near the C terminal end of Human SH3BP4 (NP_055336).  |
| <b>Positive control</b>    | Rat lung tissue lysate. Human lung tissue.  |
| <b>General notes</b>       | <p>Reproducibility is key to advancing scientific discovery and accelerating scientists' next breakthrough.</p> <p>Abcam is leading the way with our range of recombinant antibodies, knockout-validated antibodies and knockout cell lines, all of which support improved reproducibility.</p> <p>We are also planning to innovate the way in which we present recommended applications and species on our product datasheets, so that only applications &amp; species that have been tested in our own labs, our suppliers or by selected trusted collaborators are covered by our Abpromise™ guarantee.</p> <p>In preparation for this, we have started to update the applications &amp; species that this product is Abpromise guaranteed for.</p> <p>We are also updating the applications &amp; species that this product has been “predicted to work with,” however this information is not covered by our Abpromise guarantee.</p> <p>Applications &amp; species from publications and Abreviews that have not been tested in our own labs or in those of our suppliers are not covered by the Abpromise guarantee.</p> <p>Please check that this product meets your needs before purchasing. If you have any questions, special requirements or concerns, please send us an inquiry and/or contact our Support team ahead of purchase. Recommended alternatives for this product can be found below, as well as customer reviews and Q&amp;As.</p> |

### Properties

---

|                             |  |
|-----------------------------|--|
| <b>Form</b>                 | Liquid   |
| <b>Storage instructions</b> | Shipped at 4°C. Store at 4°C (stable for up to 12 months). |

|                       |   |
|-----------------------|---|
| <b>Storage buffer</b> | pH: 7.2<br>Preservative: 0.02% Sodium azide<br>Constituent: PBS |
| <b>Purity</b>         | Immunogen affinity purified                                     |
| <b>Clonality</b>      | Polyclonal  |
| <b>Isotype</b>        | IgG   |

## Applications

Our [Abpromise guarantee](#) covers the use of **ab106609** in the following tested applications.

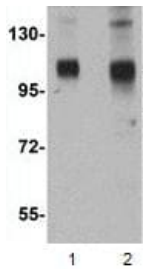
The application notes include recommended starting dilutions; optimal dilutions/concentrations should be determined by the end user.

| Application | Abreviews | Notes  |
|-------------|-----------|--|
| WB          |           | Use a concentration of 1 - 2 µg/ml. Predicted molecular weight: 107 kDa. |
| IHC-P       |           | Use a concentration of 5 µg/ml.  |

## Target

|   |   |
|---|---|
| <b>Function</b>                         | Functions in transferrin receptor internalization at the plasma membrane through a cargo-specific control of clathrin-mediated endocytosis.   |
| <b>Tissue specificity</b>               | Expressed in all tissues tested with higher expression in pancreas. Expressed by retinal pigment epithelial cells (at protein level).   |
| <b>Sequence similarities</b>            | Contains 1 SH3 domain.  |
| <b>Domain</b>                           | The SH3 domain mediates localization to the clathrin-coated pits and vesicles. The SH3 domain mediates interaction with DNM2 and the cytoplasmic part of TFRC with a lower affinity.  |
| <b>Post-translational modifications</b> | Phosphorylated upon EGF stimulation. Phosphorylation prevents interaction with DNM2.  |
| <b>Cellular localization</b>            | Membrane > clathrin-coated pit. Cytoplasmic vesicle > clathrin-coated vesicle. Nucleus. Specifically associated with transferrin receptor-containing clathrin-coated pits and clathrin-coated vesicles. May also localize to the nucleus. |

## Images



Western blot - Anti-SH3BP4 antibody (ab106609)

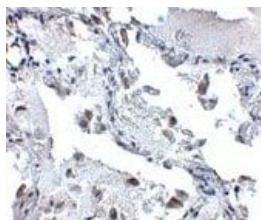
**Lane 1** : Anti-SH3BP4 antibody (ab106609) at 1 µg/ml

**Lane 2** : Anti-SH3BP4 antibody (ab106609) at 2 µg/ml

**All lanes** : Rat lung tissue lysate

Lysates/proteins at 15 µg per lane.

**Predicted band size:** 107 kDa



Immunohistochemistry (Formalin/PFA-fixed paraffin-embedded sections) - Anti-SH3BP4 antibody (ab106609)

ab106609, at 5µg/ml, staining SH3BP4 in paraffin embedded Human lung tissue by Immunohistochemistry.

**Please note:** All products are "FOR RESEARCH USE ONLY. NOT FOR USE IN DIAGNOSTIC PROCEDURES"

### Our Abpromise to you: Quality guaranteed and expert technical support

- Replacement or refund for products not performing as stated on the datasheet
- Valid for 12 months from date of delivery
- Response to your inquiry within 24 hours
- We provide support in Chinese, English, French, German, Japanese and Spanish
- Extensive multi-media technical resources to help you
- We investigate all quality concerns to ensure our products perform to the highest standards

If the product does not perform as described on this datasheet, we will offer a refund or replacement. For full details of the Abpromise, please visit <https://www.abcam.com/abpromise> or contact our technical team.

### Terms and conditions

- Guarantee only valid for products bought direct from Abcam or one of our authorized distributors