


Product datasheet

Anti-SHARPIN antibody ab125188

4 References 2 Images

Overview

Product name	Anti-SHARPIN antibody
Description	Rabbit polyclonal to SHARPIN
Host species	Rabbit
Tested applications	Suitable for: WB, IP
Species reactivity	Reacts with: Human Predicted to work with: Horse, Cow, Pig, Chimpanzee, Ferret, Rhesus monkey, Gorilla, Orangutan, Bat 
Immunogen	Synthetic peptide, corresponding to a region within amino acids 25-75 of Human SHARPIN (NP_112236.3).
Positive control	HeLa, Jurkat and 293T whole cell lysates

Properties

Form	Liquid
Storage instructions	Shipped at 4°C. Upon delivery aliquot and store at -20°C. Avoid freeze / thaw cycles.
Storage buffer	Preservative: 0.09% Sodium azide Constituent: 99% Tris citrate/phosphate pH 7 to 8
Purity	Immunogen affinity purified
Clonality	Polyclonal
Isotype	IgG

Applications

Our [Abpromise guarantee](#) covers the use of **ab125188** in the following tested applications.

The application notes include recommended starting dilutions; optimal dilutions/concentrations should be determined by the end user.

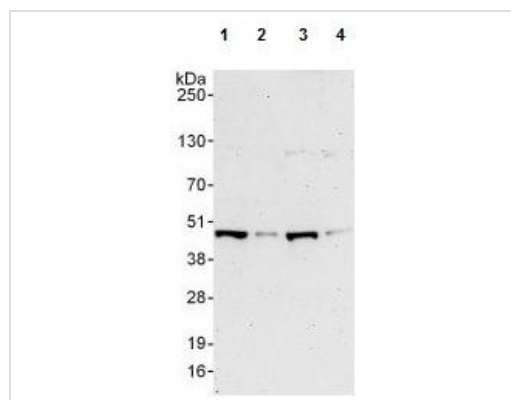
Application	Abreviews	Notes
WB		1/2000 - 1/10000. Predicted molecular weight: 40 kDa.

Application	Abreviews	Notes
IP		Use at 2-10 µg/mg of lysate.

Target

Function	May have a role in normal immune development and control of inflammation.
Tissue specificity	Highly expressed in skeletal muscle and placenta and at lower levels in brain, heart, colon without mucosa, thymus, spleen, kidney, liver, small intestine, lung and peripheral blood leukocytes.
Sequence similarities	Contains 1 RanBP2-type zinc finger.
Cellular localization	Cytoplasm. Enriched at synaptic sites in mature neurons where it colocalizes with SHANK1.

Images



Western blot - Anti-SHARPIN antibody (ab125188)

All lanes : Anti-SHARPIN antibody (ab125188) at 0.1 µg/ml

Lane 1 : HeLa whole cell lysate at 50 µg

Lane 2 : HeLa whole cell lysate at 15 µg

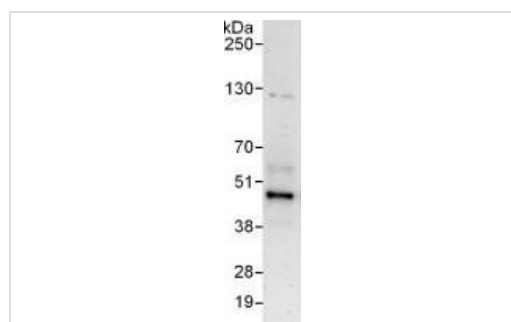
Lane 3 : 293T whole cell lysate at 50 µg

Lane 4 : Jurkat whole cell lysate at 50 µg

Developed using the ECL technique.

Predicted band size: 40 kDa

Exposure time: 3 minutes



Immunoprecipitation - Anti-SHARPIN antibody (ab125188)

ab125188, at 6 µg/mg lysate, detecting SHARPIN in HeLa cell lysate (1 mg of immunoprecipitate, 20% loaded in the lane) by Immunoprecipitation.

For the subsequent Western blot, ab125188 was used at 1 µg/ml.

The blot was developed using the ECL technique, with an exposure time of 30 seconds.

Please note: All products are "FOR RESEARCH USE ONLY. NOT FOR USE IN DIAGNOSTIC PROCEDURES"

Our Abpromise to you: Quality guaranteed and expert technical support

- Replacement or refund for products not performing as stated on the datasheet
- Valid for 12 months from date of delivery
- Response to your inquiry within 24 hours

- We provide support in Chinese, English, French, German, Japanese and Spanish
- Extensive multi-media technical resources to help you
- We investigate all quality concerns to ensure our products perform to the highest standards

If the product does not perform as described on this datasheet, we will offer a refund or replacement. For full details of the Abpromise, please visit <https://www.abcam.com/abpromise> or contact our technical team.

Terms and conditions

- Guarantee only valid for products bought direct from Abcam or one of our authorized distributors