


Product datasheet

Anti-SHARPIN antibody ab227598

2 Images

Overview

---

<b>Product name</b>	Anti-SHARPIN antibody
<b>Description</b>	Rabbit polyclonal to SHARPIN
<b>Host species</b>	Rabbit
<b>Tested applications</b>	<b>Suitable for:</b> WB, IP
<b>Species reactivity</b>	<b>Reacts with:</b> Human <b>Predicted to work with:</b> Chimpanzee 
<b>Immunogen</b>	Recombinant fragment within Human SHARPIN (internal sequence). The exact sequence is proprietary. Database link: <a href="#">Q9H0F6</a>
<b>Positive control</b>	IP: THP-1 whole cell extract. WB: K562 and THP-1 whole cell extracts.
<b>General notes</b>	<p>Reproducibility is key to advancing scientific discovery and accelerating scientists' next breakthrough.</p> <p>Abcam is leading the way with our range of recombinant antibodies, knockout-validated antibodies and knockout cell lines, all of which support improved reproducibility.</p> <p>We are also planning to innovate the way in which we present recommended applications and species on our product datasheets, so that only applications &amp; species that have been tested in our own labs, our suppliers or by selected trusted collaborators are covered by our Abpromise™ guarantee.</p> <p>In preparation for this, we have started to update the applications &amp; species that this product is Abpromise guaranteed for.</p> <p>We are also updating the applications &amp; species that this product has been “predicted to work with,” however this information is not covered by our Abpromise guarantee.</p> <p>Applications &amp; species from publications and Abreviews that have not been tested in our own labs or in those of our suppliers are not covered by the Abpromise guarantee.</p> <p>Please check that this product meets your needs before purchasing. If you have any questions, special requirements or concerns, please send us an inquiry and/or contact our Support team ahead of purchase. Recommended alternatives for this product can be found below, as well as customer reviews and Q&amp;As.</p>

Properties

---

<b>Form</b>	Liquid
<b>Storage instructions</b>	Shipped at 4°C. Store at +4°C short term (1-2 weeks). Upon delivery aliquot. Store at -20°C long term. Avoid freeze / thaw cycle.
<b>Storage buffer</b>	pH: 7.00 Preservative: 0.025% Proclin 300 Constituents: 79% PBS, 20% Glycerol (glycerin, glycerine)
<b>Purity</b>	Immunogen affinity purified
<b>Clonality</b>	Polyclonal
<b>Isotype</b>	IgG

## Applications

Our [Abpromise guarantee](#) covers the use of **ab227598** in the following tested applications.

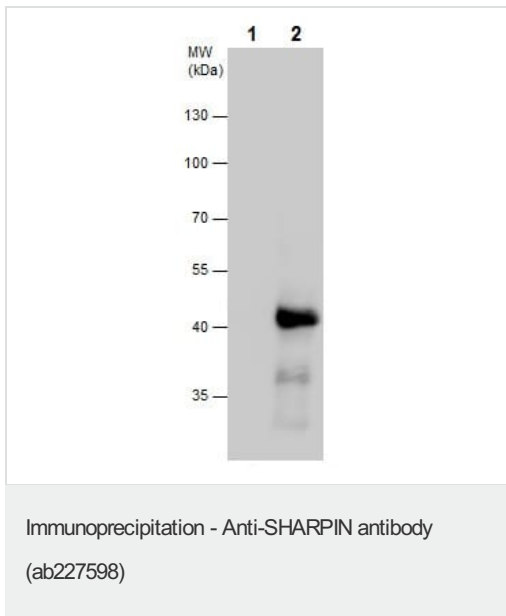
The application notes include recommended starting dilutions; optimal dilutions/concentrations should be determined by the end user.

Application	Abreviews	Notes
WB		1/500 - 1/3000. Predicted molecular weight: 40 kDa.
IP		1/100 - 1/800.

## Target

<b>Function</b>	May have a role in normal immune development and control of inflammation.
<b>Tissue specificity</b>	Highly expressed in skeletal muscle and placenta and at lower levels in brain, heart, colon without mucosa, thymus, spleen, kidney, liver, small intestine, lung and peripheral blood leukocytes.
<b>Sequence similarities</b>	Contains 1 RanBP2-type zinc finger.
<b>Cellular localization</b>	Cytoplasm. Enriched at synaptic sites in mature neurons where it colocalizes with SHANK1.

## Images

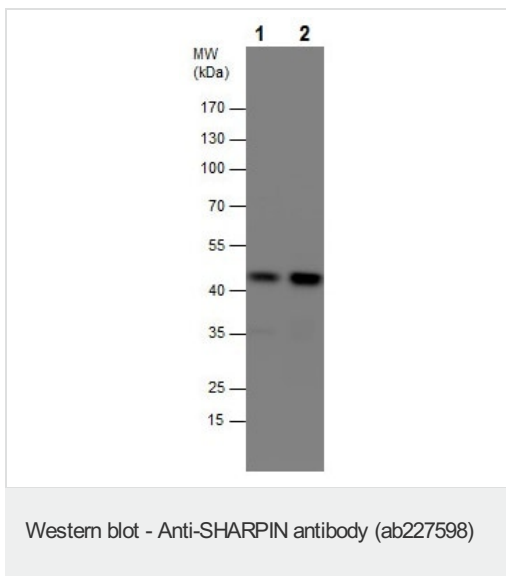


SHARPIN was immunoprecipitated from THP-1 (human monocytic leukemia cell line) whole cell extracts using 5 µg ab227598.

Western blot analysis was performed using ab227598. Anti-Rabbit IgG was used as a secondary reagent.

Lane 1: Control IgG IP in THP-1 whole cell extract.

Lane 2: ab227598 in THP-1 whole cell extract.



**All lanes :** Anti-SHARPIN antibody (ab227598) at 1/1000 dilution

**Lane 1 :** K562 (human chronic myelogenous leukemia cell line from bone marrow) whole cell extract

**Lane 2 :** THP-1 (human monocytic leukemia cell line) whole cell extract

**Predicted band size:** 40 kDa

10% SDS-PAGE gel.

**Please note:** All products are "FOR RESEARCH USE ONLY. NOT FOR USE IN DIAGNOSTIC PROCEDURES"

### Our Abpromise to you: Quality guaranteed and expert technical support

- Replacement or refund for products not performing as stated on the datasheet
- Valid for 12 months from date of delivery
- Response to your inquiry within 24 hours
- We provide support in Chinese, English, French, German, Japanese and Spanish
- Extensive multi-media technical resources to help you
- We investigate all quality concerns to ensure our products perform to the highest standards

If the product does not perform as described on this datasheet, we will offer a refund or replacement. For full details of the Abpromise, please visit <https://www.abcam.com/abpromise> or contact our technical team.

## Terms and conditions

---

- Guarantee only valid for products bought direct from Abcam or one of our authorized distributors