

Product datasheet

Anti-SHC4/SHCD antibody ab221996

1 Image

Overview

<b>Product name</b>	Anti-SHC4/SHCD antibody
<b>Description</b>	Rabbit polyclonal to SHC4/SHCD
<b>Host species</b>	Rabbit
<b>Tested applications</b>	<b>Suitable for:</b> ICC/IF
<b>Species reactivity</b>	<b>Reacts with:</b> Human
<b>Immunogen</b>	Recombinant fragment corresponding to Human SHC4/SHCD aa 76-132. Sequence: SQESPTPLCTLIPRMA SMKLANPATLLSLKNFCLGTKE VPRLKLQESRDP GSSGPSS  Database link: <a href="#">Q6S5L8</a> <div style="float: right; margin-top: 10px;"> <a href="#">Run BLAST with</a> <a href="#">Run BLAST with</a> </div>
<b>Positive control</b>	ICC/IF: SK-MEL-30 cells.
<b>General notes</b>	This product was previously labelled as SHC4

Properties

<b>Form</b>	Liquid
<b>Storage instructions</b>	Shipped at 4°C. Store at +4°C short term (1-2 weeks). Upon delivery aliquot. Store at -20°C long term. Avoid freeze / thaw cycle.
<b>Storage buffer</b>	pH: 7.20 Preservative: 0.02% Sodium azide Constituents: 40% Glycerol, PBS
<b>Purity</b>	Immunogen affinity purified
<b>Clonality</b>	Polyclonal
<b>Isotype</b>	IgG

Applications

Our [Abpromise guarantee](#) covers the use of **ab221996** in the following tested applications.

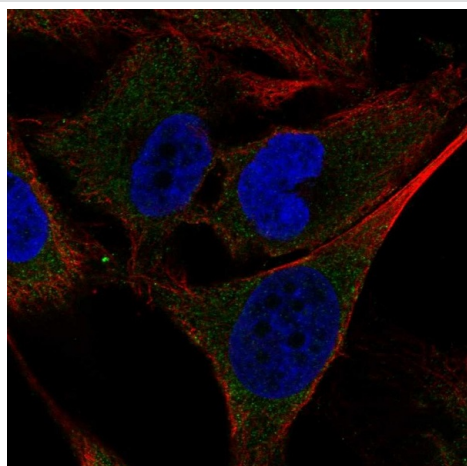
The application notes include recommended starting dilutions; optimal dilutions/concentrations should be determined by the end user.

Application	Abreviews	Notes
ICC/IF		Use a concentration of 1 - 4 µg/ml. Fixation/Permeabilization: PFA/Triton X-100.

## Target

<b>Function</b>	Activates both Ras-dependent and Ras-independent migratory pathways in melanomas. Contributes to the early phases of agrin-induced tyrosine phosphorylation of CHRN1.
<b>Tissue specificity</b>	Only expressed in melanomas. Weakly expressed in normal melanocytes and benign nevi. Highly expressed at the transition from radial growth phase to vertical growth phase and metastatic melanomas, when tumor cells acquire migratory competence and invasive potential.
<b>Sequence similarities</b>	Contains 1 PID domain. Contains 1 SH2 domain.
<b>Post-translational modifications</b>	Phosphorylated; the phosphorylation is enhanced by EGF. Phosphorylation at Tyr-424 is required for the interaction with GRB2.
<b>Cellular localization</b>	Cell junction > synapse > postsynaptic cell membrane. Colocalized with MUSK at the neuromuscular junction.

## Images



PFA-fixed, Triton X-100 permeabilized SK-MEL-30 cells stained for SHC4/SHCD (green) using ab221996 at 4 µg/ml in ICC/IF.

Immunocytochemistry/ Immunofluorescence - Anti-SHC4/SHCD antibody (ab221996)

**Please note:** All products are "FOR RESEARCH USE ONLY. NOT FOR USE IN DIAGNOSTIC PROCEDURES"

**Our Abpromise to you: Quality guaranteed and expert technical support**

- Replacement or refund for products not performing as stated on the datasheet
- Valid for 12 months from date of delivery
- Response to your inquiry within 24 hours
  
- We provide support in Chinese, English, French, German, Japanese and Spanish
- Extensive multi-media technical resources to help you
- We investigate all quality concerns to ensure our products perform to the highest standards

If the product does not perform as described on this datasheet, we will offer a refund or replacement. For full details of the Abpromise, please visit <https://www.abcam.com/abpromise> or contact our technical team.

### **Terms and conditions**

---

- Guarantee only valid for products bought direct from Abcam or one of our authorized distributors