

Product datasheet

Sheep Anti-Rat IgG H&L (Biotin) ab6851

3 References 1 Image

Overview

<b>Product name</b>	Sheep Anti-Rat IgG H&L (Biotin)
<b>Host species</b>	Sheep
<b>Target species</b>	Rat
<b>Tested applications</b>	<b>Suitable for:</b> WB, ELISA, Immunomicroscopy, Dot blot, ICC/IF, IHC-P, IHC-Fr
<b>Immunogen</b>	Rat IgG whole molecule
<b>Conjugation</b>	Biotin

Properties

<b>Form</b>	Liquid
<b>Storage instructions</b>	Shipped at 4°C. Store at +4°C short term (1-2 weeks). Upon delivery aliquot. Store at -20°C or -80°C. Avoid freeze / thaw cycle.
<b>Storage buffer</b>	pH: 7.2 Preservative: 0.01% Sodium azide Constituents: 0.878% Sodium chloride, 1% BSA, 0.424% Potassium phosphate
<b>Purity</b>	Affinity purified
<b>Purification notes</b>	Biotinamidocaproate N-Hydroxysuccinimide Ester (BAC). Biotin/Protein Ratio: 10-20 BAC molecules per Rabbit IgG molecule.
<b>Conjugation notes</b>	This product was prepared from monospecific antiserum by immunoaffinity chromatography using Rat IgG coupled to agarose beads followed by solid phase adsorption(s) to remove any unwanted reactivities
<b>Clonality</b>	Polyclonal

Applications

Our [Abpromise guarantee](#) covers the use of **ab6851** in the following tested applications.

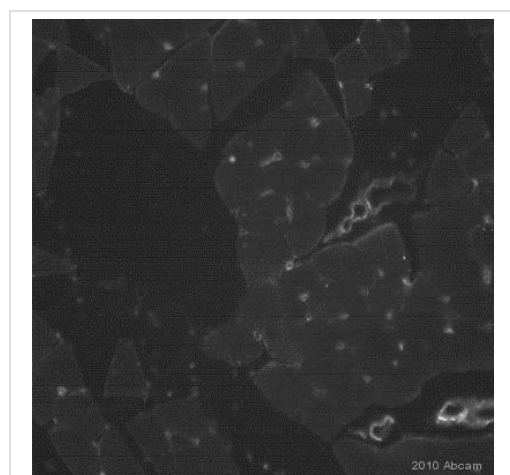
The application notes include recommended starting dilutions; optimal dilutions/concentrations should be determined by the end user.

Application	Abreviews	Notes
WB		

Application	Abreviews	Notes
ELISA		
Immunomicroscopy		
Dot blot		
ICC/IF		
IHC-P		
IHC-Fr		

**Application notes** immunoblotting, ELISA, immunohistochemistry, immunomicroscopy as well as other antibody based assays using streptavidin or avidin conjugates requiring lot-to-lot consistency

## Images



Ab6851 was used at dilution 1/100 with the primary antibody [ab56299](#) in IHC-P. See the review on [ab56299](#).

Immunohistochemistry (Formalin/PFA-fixed paraffin-embedded sections) - Sheep Anti-Rat IgG H&L (Biotin) (ab6851)

**Please note:** All products are "FOR RESEARCH USE ONLY. NOT FOR USE IN DIAGNOSTIC PROCEDURES"

## Our Abpromise to you: Quality guaranteed and expert technical support

- Replacement or refund for products not performing as stated on the datasheet
- Valid for 12 months from date of delivery
- Response to your inquiry within 24 hours
- We provide support in Chinese, English, French, German, Japanese and Spanish
- Extensive multi-media technical resources to help you
- We investigate all quality concerns to ensure our products perform to the highest standards

If the product does not perform as described on this datasheet, we will offer a refund or replacement. For full details of the Abpromise, please visit <https://www.abcam.com/abpromise> or contact our technical team.

## **Terms and conditions**

---

- Guarantee only valid for products bought direct from Abcam or one of our authorized distributors