


Product datasheet

Anti-Shoc2 / Sur8 antibody - C-terminal ab229315

3 Images

Overview

<b>Product name</b>	Anti-Shoc2 / Sur8 antibody - C-terminal
<b>Description</b>	Rabbit polyclonal to Shoc2 / Sur8 - C-terminal
<b>Host species</b>	Rabbit
<b>Tested applications</b>	<b>Suitable for:</b> IHC-P, WB
<b>Species reactivity</b>	<b>Reacts with:</b> Mouse, Human <b>Predicted to work with:</b> Rat, Cow, Xenopus laevis, Zebrafish, Rhesus monkey 
<b>Immunogen</b>	Recombinant fragment within Human Shoc2/ Sur8 (C terminal). The exact sequence is proprietary. Database link: <a href="#">Q9UQ13</a>
<b>Positive control</b>	WB: A431 whole cell extract. IHC-P: Mouse spleen and brain tissue.

Properties

<b>Form</b>	Liquid
<b>Storage instructions</b>	Shipped at 4°C. Store at +4°C short term (1-2 weeks). Upon delivery aliquot. Store at -20°C long term. Avoid freeze / thaw cycle.
<b>Storage buffer</b>	pH: 7.00 Preservative: 0.025% Proclin Constituents: PBS, 20% Glycerol
<b>Purity</b>	Immunogen affinity purified
<b>Clonality</b>	Polyclonal
<b>Isotype</b>	IgG

Applications

Our [Abpromise guarantee](#) covers the use of **ab229315** in the following tested applications.

The application notes include recommended starting dilutions; optimal dilutions/concentrations should be determined by the end user.

Application	Abreviews	Notes
IHC-P		1/100 - 1/1000.

Application	Abreviews	Notes
WB		1/500 - 1/3000. Predicted molecular weight: 65 kDa.

## Target

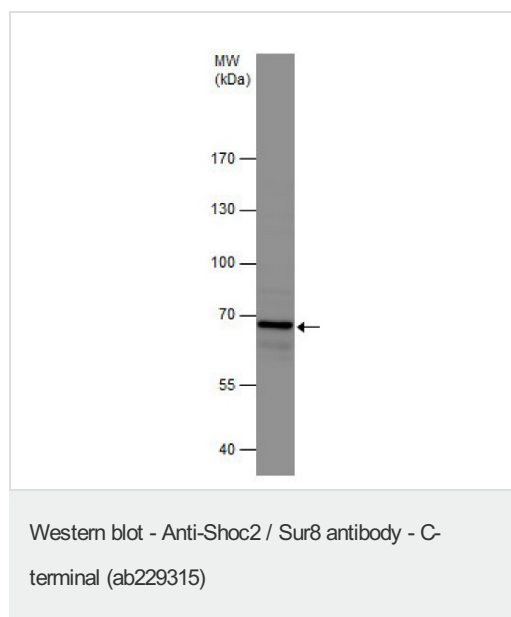
**Function** Regulatory subunit of protein phosphatase 1 (PP1c) that acts as a M-Ras/MRAS effector and participates in MAPK pathway activation. Upon M-Ras/MRAS activation, targets PP1c to specifically dephosphorylate the 'Ser-259' inhibitory site of RAF1 kinase and stimulate RAF1 activity at specialized signaling complexes.

**Involvement in disease** Defects in SHOC2 are the cause of Noonan syndrome-like with loose anagen hair (NSLAH) [MIM:607721]. NSLAH children display macrocephaly, high forehead, hypertelorism, palpebral ptosis, low-set and posteriorly rotated ears, short and webbed neck and pectus anomalies. Affected subjects also have easily pluckable, sparse, thin and slow-growing hair.

**Sequence similarities** Belongs to the SHOC2 family.  
Contains 20 LRR (leucine-rich) repeats.

**Cellular localization** Cytoplasm. Nucleus. Translocates from cytoplasm to nucleus upon growth factor stimulation.

## Images

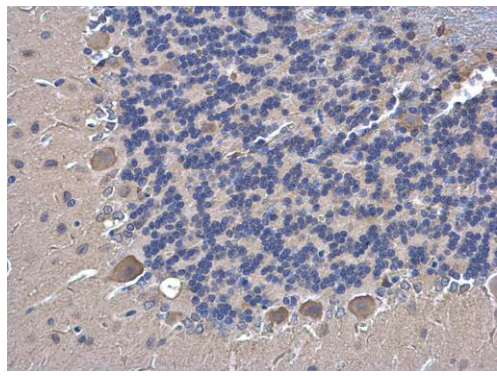


Anti-Shoc2 / Sur8 antibody - C-terminal (ab229315) at 1/1000 dilution + A431 (Human epidermoid carcinoma cell line) whole cell extracts at 30 µg

Developed using the ECL technique.

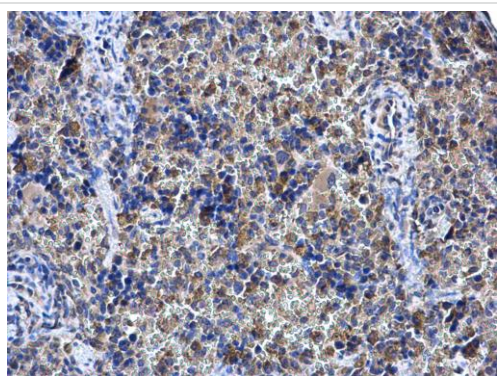
**Predicted band size: 65 kDa**

7.5% SDS-PAGE



Paraffin-embedded mouse brain tissue stained for Shoc2 / Sur8 with ab229315 at 1/500 dilution in immunohistochemical analysis.

Immunohistochemistry (Formalin/PFA-fixed paraffin-embedded sections) - Anti-Shoc2 / Sur8 antibody - C-terminal (ab229315)



Paraffin-embedded mouse spleen tissue stained for Shoc2 / Sur8 with ab229315 at 1/500 dilution in immunohistochemical analysis.

Immunohistochemistry (Formalin/PFA-fixed paraffin-embedded sections) - Anti-Shoc2 / Sur8 antibody - C-terminal (ab229315)

**Please note:** All products are "FOR RESEARCH USE ONLY. NOT FOR USE IN DIAGNOSTIC PROCEDURES"

#### **Our Abpromise to you: Quality guaranteed and expert technical support**

---

- Replacement or refund for products not performing as stated on the datasheet
- Valid for 12 months from date of delivery
- Response to your inquiry within 24 hours
- We provide support in Chinese, English, French, German, Japanese and Spanish

- Extensive multi-media technical resources to help you
- We investigate all quality concerns to ensure our products perform to the highest standards

If the product does not perform as described on this datasheet, we will offer a refund or replacement. For full details of the Abpromise, please visit <https://www.abcam.com/abpromise> or contact our technical team.

### **Terms and conditions**

---

- Guarantee only valid for products bought direct from Abcam or one of our authorized distributors