

Product datasheet

Anti-SHOX2 antibody ab82918

★★★★☆ 2 Abreviews 2 Images

Overview

Product name	Anti-SHOX2 antibody
Description	Rabbit polyclonal to SHOX2
Host species	Rabbit
Tested applications	Suitable for: WB, ELISA
Species reactivity	Reacts with: Human, Zebrafish Predicted to work with: Mouse, Rat, Rabbit, Horse, Chicken, Guinea pig, Cow, Cat, Dog
Immunogen	Synthetic peptide, corresponding to a region within internal sequence amino acids 179 - 228 (SEARVQVWFQNRRAKCRKQENQLHKGVLIGAASQFEACRVAPYVNVGAL R) of Human SHOX2, (NP_006875)
Positive control	721_B cell lysate

Properties

Form	Liquid
Storage instructions	Shipped at 4°C. Upon delivery aliquot and store at -20°C or -80°C. Avoid repeated freeze / thaw cycles.
Storage buffer	Preservative: 0.09% Sodium azide Constituents: 2% Sucrose, PBS
Purity	Immunogen affinity purified
Clonality	Polyclonal
Isotype	IgG

Applications

Our [Abpromise guarantee](#) covers the use of **ab82918** in the following tested applications.

The application notes include recommended starting dilutions; optimal dilutions/concentrations should be determined by the end user.

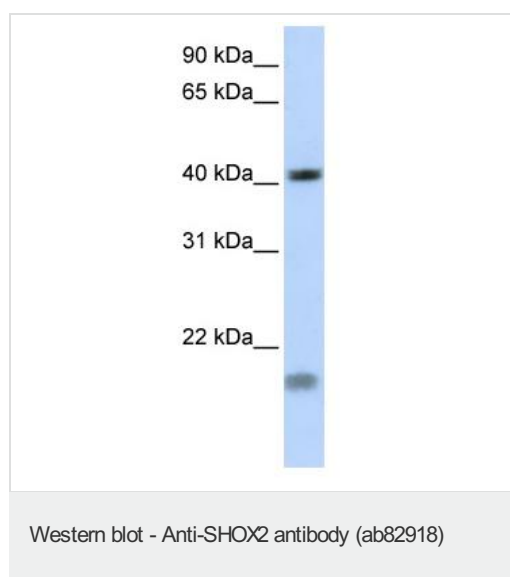
Application	Abreviews	Notes
WB	★★★★☆	Use a concentration of 1 µg/ml. Predicted molecular weight: 35 kDa. Good results were obtained when blocked with 5% non-fat dry milk in 0.05% PBS-T.

Application	Abreviews	Notes
ELISA		Use at an assay dependent concentration. ELISA titre using peptide based assay: 1/62500.

Target

Function	May be a growth regulator and have a role in specifying neural systems involved in processing somatosensory information, as well as in face and body structure formation.
Tissue specificity	Expressed in heart, skeletal muscle, liver, lung, bone marrow fibroblast, pancreas and placenta.
Sequence similarities	Belongs to the paired homeobox family. Bicoid subfamily. Contains 1 homeobox DNA-binding domain.
Developmental stage	Expressed during cranofacial development as well as in heart.
Cellular localization	Nucleus.

Images



Anti-SHOX2 antibody (ab82918) at 1 µg/ml + 721_B cell lysate at 10 µg

Secondary

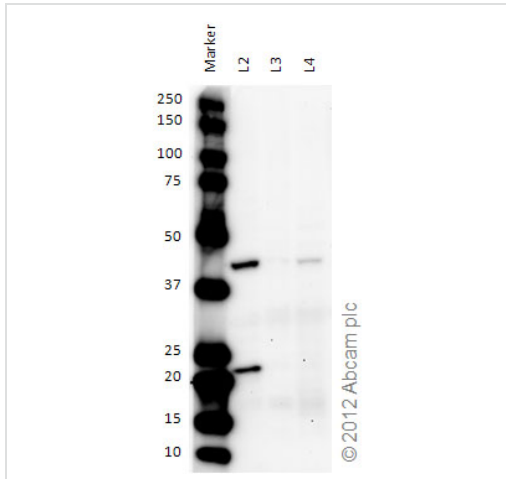
HRP conjugated anti-Rabbit IgG at 1/50000 dilution

Predicted band size: 35 kDa

Observed band size: 40 kDa

[why is the actual band size different from the predicted?](#)

Additional bands at: 20 kDa. We are unsure as to the identity of these extra bands.



Western blot - Anti-SHOX2 antibody (ab82918)

All lanes : Anti-SHOX2 antibody (ab82918) at 1 µg/ml

Lane 1 : Marker

Lane 2 : Zebrafish brain homogenate at 20 µg

Lane 3 : Zebrafish heart homogenate at 20 µg

Lane 4 : Zebrafish liver homogenate at 20 µg

Secondary

All lanes : Goat polyclonal to Rabbit IgG – H&L – Pre-Adsorbed (HRP) at 1/6000 dilution

Developed using the ECL technique.

Performed under reducing conditions.

Predicted band size: 35 kDa

Observed band size: 41 kDa [why is the actual band size different from the predicted?](#)

Exposure time: 5 minutes

Please note: All products are "FOR RESEARCH USE ONLY. NOT FOR USE IN DIAGNOSTIC PROCEDURES"

Our Abpromise to you: Quality guaranteed and expert technical support

- Replacement or refund for products not performing as stated on the datasheet
- Valid for 12 months from date of delivery
- Response to your inquiry within 24 hours
- We provide support in Chinese, English, French, German, Japanese and Spanish
- Extensive multi-media technical resources to help you
- We investigate all quality concerns to ensure our products perform to the highest standards

If the product does not perform as described on this datasheet, we will offer a refund or replacement. For full details of the Abpromise, please visit <https://www.abcam.com/abpromise> or contact our technical team.

Terms and conditions

- Guarantee only valid for products bought direct from Abcam or one of our authorized distributors