


## Product datasheet

# Anti-SHP1 antibody ab131537

[1 References](#) [3 Images](#)

### Overview

<b>Product name</b>	Anti-SHP1 antibody
<b>Description</b>	Rabbit polyclonal to SHP1
<b>Host species</b>	Rabbit
<b>Tested applications</b>	<b>Suitable for:</b> WB, IHC-P, ICC/IF
<b>Species reactivity</b>	<b>Reacts with:</b> Mouse, Human <b>Predicted to work with:</b> Rat 
<b>Immunogen</b>	Synthetic peptide conjugated to KLH, derived from around amino acids 534-538 (S-E-Y-G-N) of Human SHP1 (NP_002822.2). <a href="#">Run BLAST with</a> <a href="#">Run BLAST with</a>
<b>Positive control</b>	MCF cells; 293 cell extract; Human breast carcinoma tissue

### Properties

<b>Form</b>	Liquid
<b>Storage instructions</b>	Shipped at 4°C. Store at -20°C. Stable for 12 months at -20°C.
<b>Storage buffer</b>	pH: 7.40 Preservative: 0.02% Sodium azide Constituents: 49% PBS, 50% Glycerol, 0.88% Sodium chloride Note: PBS without Mg <sup>2+</sup> and Ca <sup>2+</sup>
<b>Purity</b>	Immunogen affinity purified
<b>Clonality</b>	Polyclonal
<b>Isotype</b>	IgG

### Applications

Our [Abpromise guarantee](#) covers the use of **ab131537** in the following tested applications.

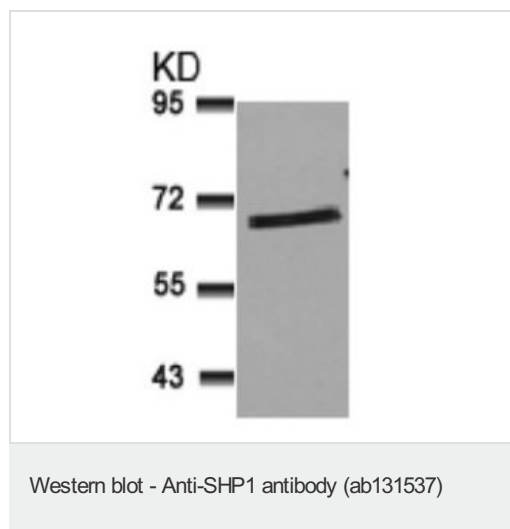
The application notes include recommended starting dilutions; optimal dilutions/concentrations should be determined by the end user.

Application	Abreviews	Notes
WB		1/500 - 1/1000. Predicted molecular weight: 68 kDa.
IHC-P		1/50 - 1/100.
ICC/IF		1/100 - 1/200.

## Target

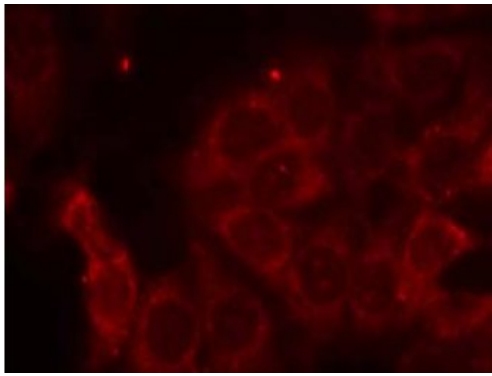
<b>Function</b>	Plays a key role in hematopoiesis. This PTPase activity may directly link growth factor receptors and other signaling proteins through protein-tyrosine phosphorylation. The SH2 regions may interact with other cellular components to modulate its own phosphatase activity against interacting substrates. Together with MTUS1, induces UBE2V2 expression upon angiotensin II stimulation.
<b>Tissue specificity</b>	Isoform 1 is expressed in hematopoietic cells. Isoform 2 is expressed in non-hematopoietic cells.
<b>Sequence similarities</b>	Belongs to the protein-tyrosine phosphatase family. Non-receptor class 2 subfamily. Contains 2 SH2 domains. Contains 1 tyrosine-protein phosphatase domain.
<b>Post-translational modifications</b>	Phosphorylated on serine and tyrosine residues.
<b>Cellular localization</b>	Cytoplasm. Nucleus. In neurons, translocates into the nucleus after treatment with angiotensin II.

## Images



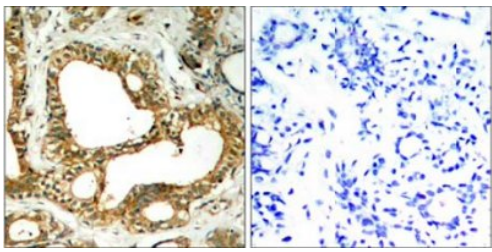
Anti-SHP1 antibody (ab131537) at 1/500 dilution + 293 cell extract

**Predicted band size:** 68 kDa



Immunocytochemistry/ Immunofluorescence - Anti-SHP1 antibody (ab131537)

Immunofluorescence analysis of methanol-fixed MCF cells labelling SHP1 with ab131537 at 1/100 dilution.



Immunohistochemistry (Formalin/PFA-fixed paraffin-embedded sections) - Anti-SHP1 antibody (ab131537)

Immunohistochemical analysis of paraffin-embedded Human breast carcinoma tissue labelling SHP1 with ab131537 at 1/50 dilution. Right panel was preincubated with blocking peptide.

**Please note:** All products are "FOR RESEARCH USE ONLY. NOT FOR USE IN DIAGNOSTIC PROCEDURES"

### Our Abpromise to you: Quality guaranteed and expert technical support

---

- Replacement or refund for products not performing as stated on the datasheet
- Valid for 12 months from date of delivery
- Response to your inquiry within 24 hours
- We provide support in Chinese, English, French, German, Japanese and Spanish
- Extensive multi-media technical resources to help you
- We investigate all quality concerns to ensure our products perform to the highest standards

If the product does not perform as described on this datasheet, we will offer a refund or replacement. For full details of the Abpromise, please visit <https://www.abcam.com/abpromise> or contact our technical team.

## Terms and conditions

---

- Guarantee only valid for products bought direct from Abcam or one of our authorized distributors