

Product datasheet

Anti-SHP1 antibody [Y476] ab32559

Recombinant **RabMAb**

★★★★★ 3 Abreviews 7 References 7 Images

Overview

Product name	Anti-SHP1 antibody [Y476]
Description	Rabbit monoclonal [Y476] to SHP1
Host species	Rabbit
Specificity	The antibody is predicted to detect isoforms 1, 2 and 3 of human SHP1 based on sequence analysis.
Tested applications	Suitable for: WB, IHC-P
Species reactivity	Reacts with: Mouse, Rat, Human
Immunogen	Synthetic peptide within Human SHP1 aa 550 to the C-terminus (C terminal). The exact sequence is proprietary. Database link: P29350
Positive control	A431 cell lysate, Jurkat cell lysate, K562 cell lysate
General notes	Our RabMAb [®] technology is a patented hybridoma-based technology for making rabbit monoclonal antibodies. For details on our patents, please refer to RabMAb[®] patents . We are constantly working hard to ensure we provide our customers with best in class antibodies. As a result of this work we are pleased to now offer this antibody in purified format. We are in the process of updating our datasheets. The purified format is designated 'PUR' on our product labels. If you have any questions regarding this update, please contact our Scientific Support team. This product is a recombinant rabbit monoclonal antibody .

Properties

Form	Liquid
Storage instructions	Shipped at 4°C. Store at +4°C short term (1-2 weeks). Upon delivery aliquot. Store at -20°C. Stable for 12 months at -20°C.
Storage buffer	pH: 7.20 Preservative: 0.01% Sodium azide Constituents: 59% PBS, 40% Glycerol, 0.05% BSA
Purity	Protein A purified

Clonality	Monoclonal
Clone number	Y476
Isotype	IgG

Applications

Our [Abpromise guarantee](#) covers the use of **ab32559** in the following tested applications.

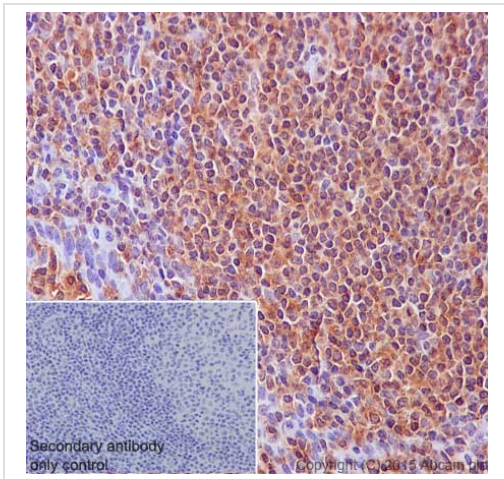
The application notes include recommended starting dilutions; optimal dilutions/concentrations should be determined by the end user.

Application	Abreviews	Notes
WB	★★★★★	1/1000. Detects a band of approximately 65 kDa (predicted molecular weight: 68 kDa).
IHC-P		1/100.

Target

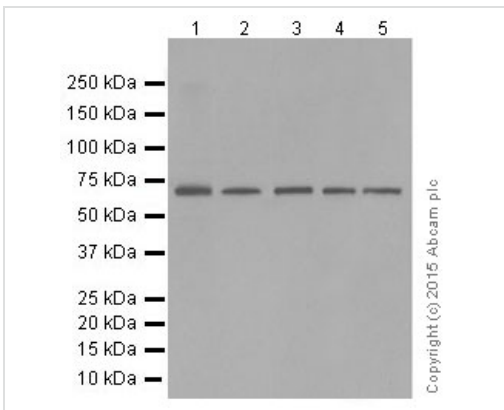
Function	Plays a key role in hematopoiesis. This PTPase activity may directly link growth factor receptors and other signaling proteins through protein-tyrosine phosphorylation. The SH2 regions may interact with other cellular components to modulate its own phosphatase activity against interacting substrates. Together with MTUS1, induces UBE2V2 expression upon angiotensin II stimulation.
Tissue specificity	Isoform 1 is expressed in hematopoietic cells. Isoform 2 is expressed in non-hematopoietic cells.
Sequence similarities	Belongs to the protein-tyrosine phosphatase family. Non-receptor class 2 subfamily. Contains 2 SH2 domains. Contains 1 tyrosine-protein phosphatase domain.
Post-translational modifications	Phosphorylated on serine and tyrosine residues.
Cellular localization	Cytoplasm. Nucleus. In neurons, translocates into the nucleus after treatment with angiotensin II.

Images



Immunohistochemical staining of paraffin embedded human tonsil with purified ab32559 at a working dilution of 1/100. The secondary antibody used is HRP goat anti-rabbit IgG H&L (ab97051) at 1/500. The sample is counter-stained with hematoxylin. Antigen retrieval was performed using Tris-EDTA buffer, pH 9.0. PBS was used instead of the primary antibody as the negative control, and is shown in the inset.

Immunohistochemistry (Formalin/PFA-fixed paraffin-embedded sections) - Anti-SHP1 antibody [Y476] (ab32559)



Western blot - Anti-SHP1 antibody [Y476] (ab32559)

All lanes : Anti-SHP1 antibody [Y476] (ab32559) at 1/1000 dilution (purified)

Lane 1 : SP2/0 cell lysate

Lane 2 : mouse marrow

Lane 3 : rat brain

Lane 4 : C6 cell lysate

Lane 5 : rat cerebral cortex

Lysates/proteins at 20 µg per lane.

Secondary

All lanes : HRP goat anti-rabbit IgG (H+L) at 1/50000 dilution

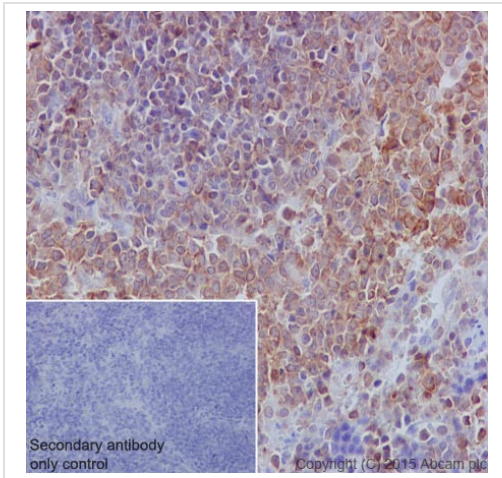
Predicted band size: 68 kDa

Observed band size: 65 kDa

[why is the actual band size different from the predicted?](#)

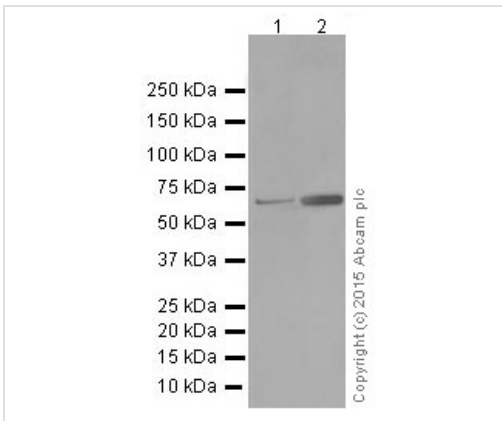
Blocking buffer: 5% NFDm/TBST

Dilution buffer: 5% NFDm/TBST



Immunohistochemical staining of paraffin embedded rat spleen with purified ab32559 at a working dilution of 1/100. The secondary antibody used is HRP goat anti-rabbit IgG H&L (ab97051) at 1/500. The sample is counter-stained with hematoxylin. Antigen retrieval was performed using Tris-EDTA buffer, pH 9.0. PBS was used instead of the primary antibody as the negative control, and is shown in the inset.

Immunohistochemistry (Formalin/PFA-fixed paraffin-embedded sections) - Anti-SHP1 antibody [Y476] (ab32559)



Western blot - Anti-SHP1 antibody [Y476] (ab32559)

All lanes : Anti-SHP1 antibody [Y476] (ab32559) at 1/1000 dilution (purified)

Lane 1 : A431 cell lysate

Lane 2 : Jurkat cell lysate

Lysates/proteins at 20 µg per lane.

Secondary

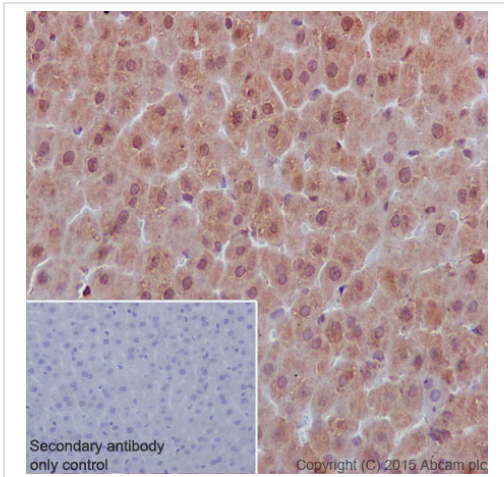
All lanes : HRP goat anti-rabbit IgG (H+L) at 1/50000 dilution

Predicted band size: 68 kDa

Observed band size: 65 kDa [why is the actual band size different from the predicted?](#)

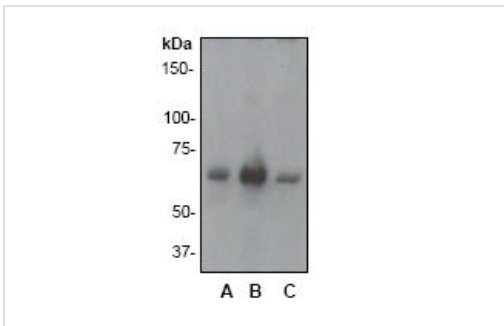
Blocking buffer: 5% NFDm/TBST

Dilution buffer: 5% NFDm/TBST



Immunohistochemical staining of paraffin embedded mouse liver with purified ab32559 at a working dilution of 1/100. The secondary antibody used is HRP goat anti-rabbit IgG H&L ([ab97051](#)) at 1/500. The sample is counter-stained with hematoxylin. Antigen retrieval was performed using Tris-EDTA buffer, pH 9.0. PBS was used instead of the primary antibody as the negative control, and is shown in the inset.

Immunohistochemistry (Formalin/PFA-fixed paraffin-embedded sections) - Anti-SHP1 antibody [Y476] (ab32559)



All lanes : Anti-SHP1 antibody [Y476] (ab32559) at 1/1000 dilution (unpurified)

Lane 1 : A- A431 cell lysate

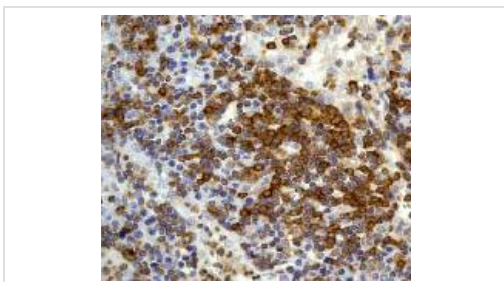
Lane 2 : B- Jurkat cell lysate

Lane 3 : C- K562 cell lysate

Predicted band size: 68 kDa

Observed band size: 65 kDa [why is the actual band size different from the predicted?](#)

Western blot - Anti-SHP1 antibody [Y476] (ab32559)



Unpurified ab32559, at a 1/50 dilution, staining human lymph node by immunohistochemistry, Paraffin embedded tissue.

Immunohistochemistry (Formalin/PFA-fixed paraffin-embedded sections) - Anti-SHP1 antibody [Y476] (ab32559)

Our Abpromise to you: Quality guaranteed and expert technical support

- Replacement or refund for products not performing as stated on the datasheet
- Valid for 12 months from date of delivery
- Response to your inquiry within 24 hours

- We provide support in Chinese, English, French, German, Japanese and Spanish
- Extensive multi-media technical resources to help you
- We investigate all quality concerns to ensure our products perform to the highest standards

If the product does not perform as described on this datasheet, we will offer a refund or replacement. For full details of the Abpromise, please visit <https://www.abcam.com/abpromise> or contact our technical team.

Terms and conditions

- Guarantee only valid for products bought direct from Abcam or one of our authorized distributors