

Product datasheet

Anti-Sialoadhesin/CD169 antibody [SP213] - C-terminal  
ab227672

Recombinant RabMAb

8 Images

Overview

|                            |   |
|----------------------------|---|
| <b>Product name</b>        | Anti-Sialoadhesin/CD169 antibody [SP213] - C-terminal   |
| <b>Description</b>         | Rabbit monoclonal [SP213] to Sialoadhesin/CD169 - C-terminal  |
| <b>Host species</b>        | Rabbit  |
| <b>Tested applications</b> | <b>Suitable for:</b> Flow Cyt, IHC-P  |
| <b>Species reactivity</b>  | <b>Reacts with:</b> Human   |
| <b>Immunogen</b>           | Synthetic peptide within Human Sialoadhesin/CD169 aa 1650 to the C-terminus. The exact sequence is proprietary. Near the C-terminal.<br>Database link: <a href="#">Q9BZZ2</a> |
| <b>Positive control</b>    | IHC-P: Human liver, bone marrow, colon, lung, and adrenal gland tissue; FC: Human PBMC treated with 20ng/ml IFN-gamma for 24 hours cells.                                     |
| <b>General notes</b>       | This product was previously labelled as Sialoadhesin<br><br>This product is a <a href="#">recombinant rabbit monoclonal antibody</a> .  |

Properties

|                             |   |
|-----------------------------|---|
| <b>Form</b>                 | Liquid  |
| <b>Storage instructions</b> | Shipped at 4°C. Store at +4°C short term (1-2 weeks). Upon delivery aliquot. Store at -20°C long term. Avoid freeze / thaw cycle. |
| <b>Storage buffer</b>       | pH: 7.6<br>Preservative: 0.1% Sodium azide<br>Constituents: PBS, 1% BSA   |
| <b>Purity</b>               | Protein A/G purified  |
| <b>Purification notes</b>   | Purified from TCS by protein A/G.   |
| <b>Clonality</b>            | Monoclonal  |
| <b>Clone number</b>         | SP213   |
| <b>Isotype</b>              | IgG   |

## Applications

---

Our [Abpromise guarantee](#) covers the use of **ab227672** in the following tested applications.

The application notes include recommended starting dilutions; optimal dilutions/concentrations should be determined by the end user.

| Application | Abreviews | Notes  |
|-------------|-----------|--|
| Flow Cyt    |           | 1/20.  |
| IHC-P       |           | 1/100.<br>Antigen retrieval: Boil tissue section in 10mM citrate buffer, pH 6.0 for 10 minutes followed by cooling at room temperature for 20 minutes. |

---

## Target

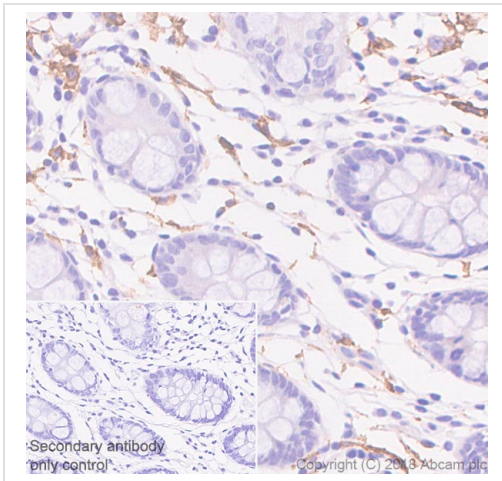
---

|                              |   |
|------------------------------|---|
| <b>Function</b>              | Acts as an endocytic receptor mediating clathrin dependent endocytosis. Macrophage-restricted adhesion molecule that mediates sialic-acid dependent binding to lymphocytes, including granulocytes, monocytes, natural killer cells, B-cells and CD8 T-cells. Preferentially binds to alpha-2,3-linked sialic acid (By similarity). Binds to SPN/CD43 on T-cells (By similarity). May play a role in hemopoiesis. |
| <b>Tissue specificity</b>    | Expressed by macrophages in various tissues. High levels are found in spleen, lymph node, perivascular macrophages in brain and lower levels in bone marrow, liver Kupffer cells and lamina propria of colon and lung. Also expressed by inflammatory macrophages in rheumatoid arthritis.  |
| <b>Sequence similarities</b> | Belongs to the immunoglobulin superfamily. SIGLEC (sialic acid binding Ig-like lectin) family. Contains 16 Ig-like C2-type (immunoglobulin-like) domains. Contains 1 Ig-like V-type (immunoglobulin-like) domain.   |
| <b>Cellular localization</b> | Secreted and Cell membrane.   |

---

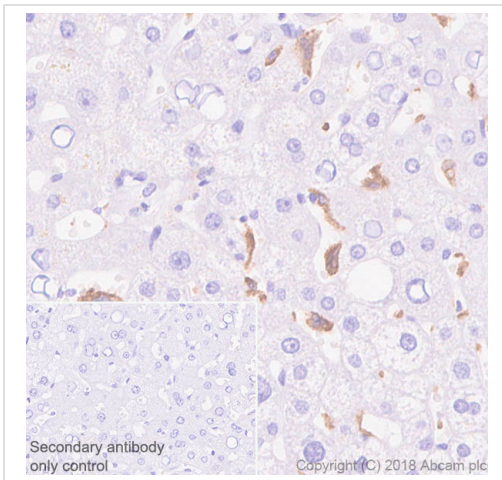
## Images

---



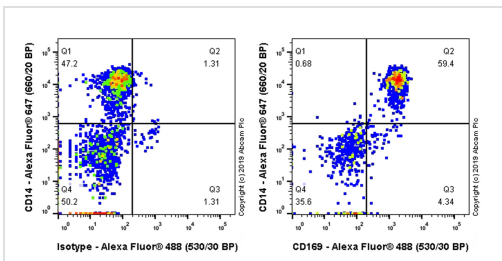
Immunohistochemistry (Formalin/PFA-fixed paraffin-embedded sections) - Anti-Sialoadhesin/CD169 antibody [SP213] - C-terminal (ab227672)

Immunohistochemistry (Formalin/PFA-fixed paraffin-embedded sections) analysis of Human colon tissue sections labeling Sialoadhesin/CD169 with ab227672 at 1/100 dilution (1.17 µg/ml). Heat mediated antigen retrieval was performed Heat mediated antigen retrieval with sodium citrate buffer (pH 6.0, epitope retrieval solution 1) for 10 mins. Rabbit specific IHC polymer detection kit HRP/DAB (ab209101) was used as the secondary antibody. Negative control: PBS instead of the primary antibody. Hematoxylin was used as a counterstain.



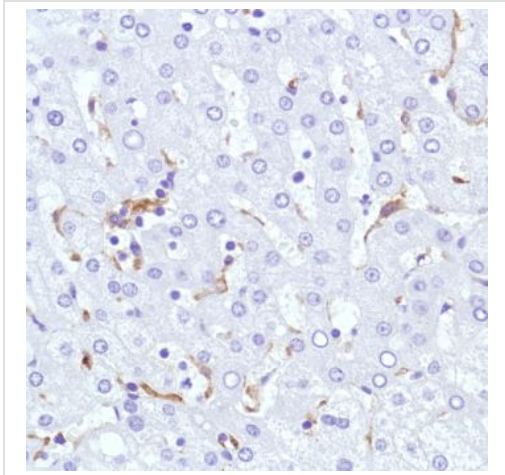
Immunohistochemistry (Formalin/PFA-fixed paraffin-embedded sections) - Anti-Sialoadhesin/CD169 antibody [SP213] - C-terminal (ab227672)

Immunohistochemistry (Formalin/PFA-fixed paraffin-embedded sections) analysis of Human liver tissue sections labeling Sialoadhesin/CD169 with ab227672 at 1/100 dilution (1.17 µg/ml). Heat mediated antigen retrieval was performed Heat mediated antigen retrieval with sodium citrate buffer (pH 6.0, epitope retrieval solution 1) for 10 mins. Rabbit specific IHC polymer detection kit HRP/DAB (ab209101) was used as the secondary antibody. Negative control: PBS instead of the primary antibody. Hematoxylin was used as a counterstain.



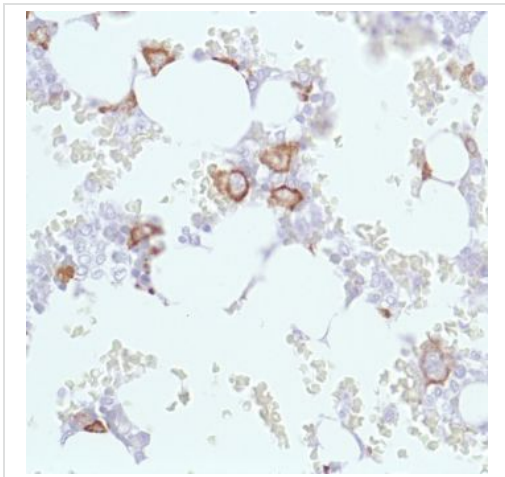
Flow Cytometry - Anti-Sialoadhesin/CD169 antibody [SP213] - C-terminal (ab227672)

Flow Cytometry analysis of Human PBMC treated with 20ng/ml IFN-gamma for 24 hours cells labeling Sialoadhesin/CD169 with purified ab227672 at 1/20 dilution (6 µg/ml) (red). Cells were fixed with 4% paraformaldehyde and permeabilised with 0.1% Tween-20. A Goat anti rabbit IgG (Alexa Fluor® 488, ab150081) secondary antibody was used at 1/2000 dilution. Isotype control - Rabbit monoclonal IgG (ab172730). Unlabeled control - Unlabelled cells.



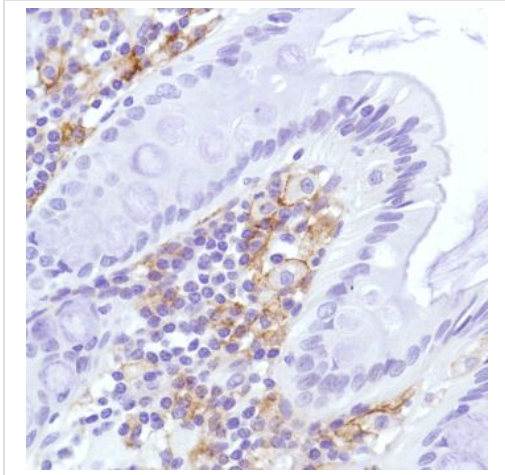
Formalin-fixed, paraffin-embedded human liver tissue stained for Sialoadhesin/CD169 with ab227672 at 1/100 dilution in immunohistochemical analysis.

Immunohistochemistry (Formalin/PFA-fixed paraffin-embedded sections) - Anti-Sialoadhesin/CD169 antibody [SP213] - C-terminal (ab227672)



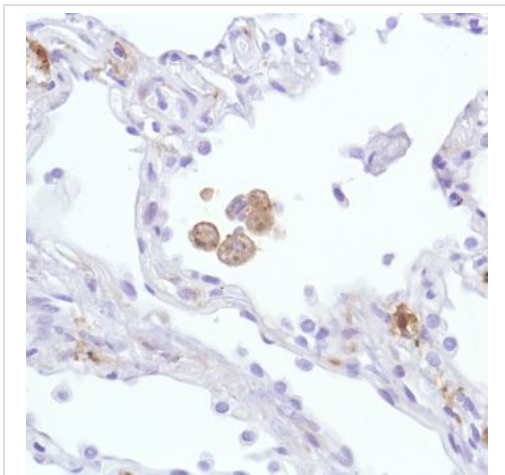
Formalin-fixed, paraffin-embedded human bone marrow tissue stained for Sialoadhesin/CD169 with ab227672 at 1/100 dilution in immunohistochemical analysis.

Immunohistochemistry (Formalin/PFA-fixed paraffin-embedded sections) - Anti-Sialoadhesin/CD169 antibody [SP213] - C-terminal (ab227672)



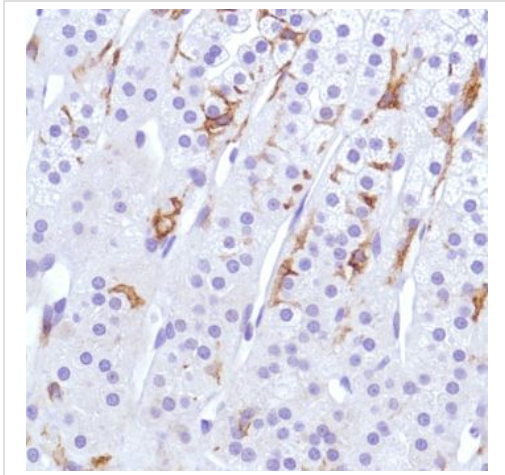
Formalin-fixed, paraffin-embedded human colon tissue stained for Sialoadhesin/CD169 with ab227672 at 1/100 dilution in immunohistochemical analysis.

Immunohistochemistry (Formalin/PFA-fixed paraffin-embedded sections) - Anti-Sialoadhesin/CD169 antibody [SP213] - C-terminal (ab227672)



Formalin-fixed, paraffin-embedded human lung tissue stained for Sialoadhesin/CD169 with ab227672 at 1/100 dilution in immunohistochemical analysis.

Immunohistochemistry (Formalin/PFA-fixed paraffin-embedded sections) - Anti-Sialoadhesin/CD169 antibody [SP213] - C-terminal (ab227672)



Formalin-fixed, paraffin-embedded human adrenal gland tissue stained for Sialoadhesin/CD169 with ab227672 at 1/100 dilution in immunohistochemical analysis.

Immunohistochemistry (Formalin/PFA-fixed paraffin-embedded sections) - Anti-Sialoadhesin/CD169 antibody [SP213] - C-terminal (ab227672)

**Please note:** All products are "FOR RESEARCH USE ONLY. NOT FOR USE IN DIAGNOSTIC PROCEDURES"

### **Our Abpromise to you: Quality guaranteed and expert technical support**

---

- Replacement or refund for products not performing as stated on the datasheet
- Valid for 12 months from date of delivery
- Response to your inquiry within 24 hours
  
- We provide support in Chinese, English, French, German, Japanese and Spanish
- Extensive multi-media technical resources to help you
- We investigate all quality concerns to ensure our products perform to the highest standards

If the product does not perform as described on this datasheet, we will offer a refund or replacement. For full details of the Abpromise, please visit <https://www.abcam.com/abpromise> or contact our technical team.

### **Terms and conditions**

---

- Guarantee only valid for products bought direct from Abcam or one of our authorized distributors