



Product datasheet

Anti-SIGLEC14 antibody ab233299

3 Images

Overview

<b>Product name</b>	Anti-SIGLEC14 antibody
<b>Description</b>	Rabbit polyclonal to SIGLEC14
<b>Host species</b>	Rabbit
<b>Specificity</b>	Expected cross reactivity with SIGLEC5, 100%.
<b>Tested applications</b>	<b>Suitable for:</b> IHC-P, WB
<b>Species reactivity</b>	<b>Reacts with:</b> Rat, Human
<b>Immunogen</b>	Recombinant fragment corresponding to Human SIGLEC14 aa 24-137. Expressed in E. coli. N-terminal His-tag and S-tag. Sequence:  QVQKSVTVQEGLCVLVPCSFSPWRSWYSSPLYVY WFRDGEIPYYAEVV ATNNPDRRVKPETQGRFLLGDVQKKNCLSLSIGDARM EDTGSYFFRVERG RDVKYSYQQNKLNL  Database link: <a href="#">Q08ET2</a>   <a href="#">Run BLAST with</a>  <a href="#">Run BLAST with</a>
<b>Positive control</b>	IHC-P: Human liver tissue. WB: Recombinant human SIGLEC14 protein. Rat small intestine lysate.

Properties

<b>Form</b>	Liquid
<b>Storage instructions</b>	Shipped at 4°C. Store at +4°C short term (1-2 weeks). Upon delivery aliquot. Store at -20°C long term. Avoid freeze / thaw cycle.
<b>Storage buffer</b>	pH: 7.4 Preservative: 0.02% Sodium azide Constituents: PBS, 50% Glycerol
<b>Purity</b>	Immunogen affinity purified
<b>Purification notes</b>	Antigen-specific affinity chromatography followed by Protein A affinity chromatography.
<b>Clonality</b>	Polyclonal
<b>Isotype</b>	IgG

## Applications

Our [Abpromise guarantee](#) covers the use of **ab233299** in the following tested applications.

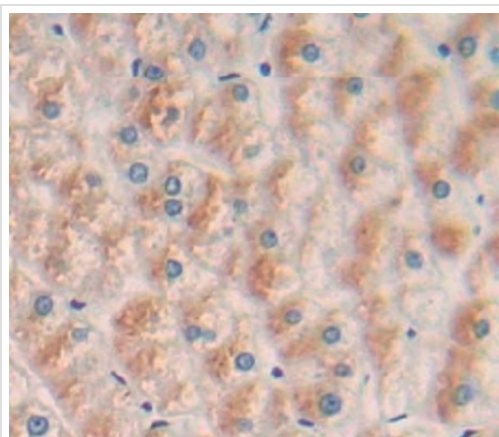
The application notes include recommended starting dilutions; optimal dilutions/concentrations should be determined by the end user.

Application	Abreviews	Notes
IHC-P		Use a concentration of 5 - 20 µg/ml.
WB		Use a concentration of 0.2 - 2 µg/ml.

## Target

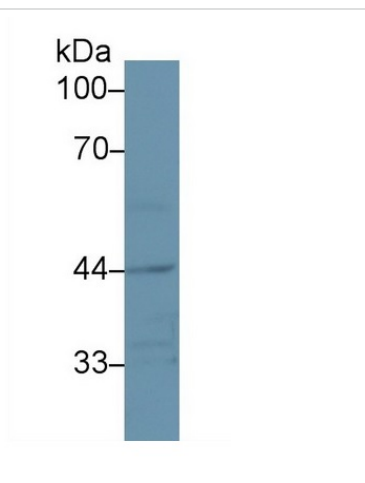
<b>Function</b>	Putative adhesion molecule. Sialic acid-binding paired receptor which may activate associated receptors.
<b>Tissue specificity</b>	Mainly expressed in hematopoietic tissues including bone marrow, spleen and fetal liver. Also detected in lung and testis.
<b>Sequence similarities</b>	Belongs to the immunoglobulin superfamily. SIGLEC (sialic acid binding Ig-like lectin) family. Contains 2 Ig-like C2-type (immunoglobulin-like) domains. Contains 1 Ig-like V-type (immunoglobulin-like) domain.
<b>Cellular localization</b>	Cell membrane.

## Images



Formalin-fixed, paraffin-embedded human liver tissue stained for SIGLEC14 with ab233299 at 20 µg/ml in immunohistochemical analysis. DAB staining.

Immunohistochemistry (Formalin/PFA-fixed paraffin-embedded sections) - Anti-SIGLEC14 antibody (ab233299)

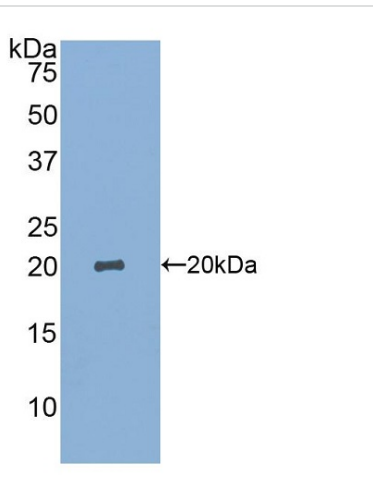


Western blot - Anti-SIGLEC14 antibody (ab233299)

Anti-SIGLEC14 antibody (ab233299) at 1 µg/ml + Rat small intestine tissue lysate

**Secondary**

HRP-Linked Goat anti-Rabbit IgG polyclonal at 0.2 µg/ml



Western blot - Anti-SIGLEC14 antibody (ab233299)

Anti-SIGLEC14 antibody (ab233299) at 1 µg/ml + Recombinant human SIGLEC14 protein

**Please note:** All products are "FOR RESEARCH USE ONLY. NOT FOR USE IN DIAGNOSTIC PROCEDURES"

**Our Abpromise to you: Quality guaranteed and expert technical support**

- Replacement or refund for products not performing as stated on the datasheet
- Valid for 12 months from date of delivery
- Response to your inquiry within 24 hours
- We provide support in Chinese, English, French, German, Japanese and Spanish
- Extensive multi-media technical resources to help you
- We investigate all quality concerns to ensure our products perform to the highest standards

If the product does not perform as described on this datasheet, we will offer a refund or replacement. For full details of the Abpromise,

please visit <https://www.abcam.com/abpromise> or contact our technical team.

## **Terms and conditions**

---

- Guarantee only valid for products bought direct from Abcam or one of our authorized distributors