

Product datasheet

Anti-SIGLEC5 antibody [1A5] ab97426

1 References 1 Image

Overview

| | |
|----------------------------|---|
| Product name | Anti-SIGLEC5 antibody [1A5] |
| Description | Mouse monoclonal [1A5] to SIGLEC5 |
| Host species | Mouse |
| Specificity | This antibody cross reacts with SEGLEC14. |
| Tested applications | Suitable for: IHC-Fr, ELISA, Flow Cyt, ICC/IF, IP, Neutralising, WB |
| Species reactivity | Reacts with: Human |
| Immunogen | Siglec-5-Fc protein, containing entire extracellular region of siglec-5 fused with the Fc region of human IgG1. |
| Positive control | Siglec 5 transfected CHO cells. |

Properties

| | |
|-----------------------------|--|
| Form | Liquid |
| Storage instructions | Shipped at 4°C. Upon delivery aliquot and store at -20°C. Avoid repeated freeze / thaw cycles. |
| Storage buffer | Constituent: PBS |
| Purity | Protein A/G purified |
| Clonality | Monoclonal |
| Clone number | 1A5 |
| Myeloma | Sp2 |
| Isotype | IgG1 |

Applications

Our [Abpromise guarantee](#) covers the use of **ab97426** in the following tested applications.

The application notes include recommended starting dilutions; optimal dilutions/concentrations should be determined by the end user.

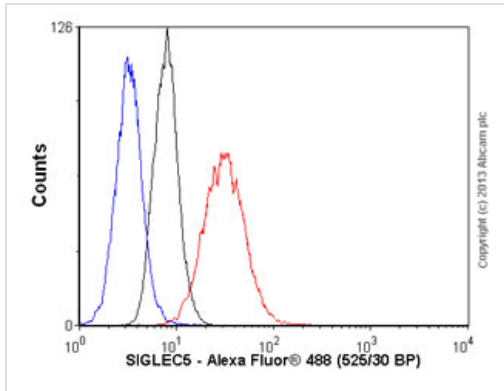
| Application | Abreviews | Notes |
|-------------|-----------|--|
| IHC-Fr | | Use at an assay dependent concentration. |

| Application | Abreviews | Notes |
|--------------|-----------|---|
| ELISA | | Use at an assay dependent concentration. |
| Flow Cyt | | Use 1µg for 10 ⁶ cells. ab170190 - Mouse monoclonal IgG1, is suitable for use as an isotype control with this antibody. |
| ICC/IF | | Use at an assay dependent concentration. |
| IP | | Use at an assay dependent concentration. |
| Neutralising | | Use at an assay dependent concentration. |
| WB | | Use at an assay dependent concentration. Predicted molecular weight: 61 kDa. |

Target

| | |
|------------------------------|--|
| Function | Putative adhesion molecule that mediates sialic-acid dependent binding to cells. Binds equally to alpha-2,3-linked and alpha-2,6-linked sialic acid. The sialic acid recognition site may be masked by cis interactions with sialic acids on the same cell surface. |
| Tissue specificity | Expressed by monocytic/myeloid lineage cells. Found at high levels in peripheral blood leukocytes, spleen, bone marrow and at lower levels in lymph node, lung, appendix, placenta, pancreas and thymus. Expressed by monocytes and neutrophils but absent from leukemic cell lines representing early stages of myelomonocytic differentiation. |
| Sequence similarities | Belongs to the immunoglobulin superfamily. SIGLEC (sialic acid binding Ig-like lectin) family. Contains 2 Ig-like C2-type (immunoglobulin-like) domains. Contains 1 Ig-like V-type (immunoglobulin-like) domain. |
| Domain | Contains 1 copy of a cytoplasmic motif that is referred to as the immunoreceptor tyrosine-based inhibitor motif (ITIM). This motif is involved in modulation of cellular responses. The phosphorylated ITIM motif can bind the SH2 domain of several SH2-containing phosphatases. |
| Cellular localization | Membrane. |

Images



Flow Cytometry - Anti-SIGLEC5 antibody [1A5]
(ab97426)

Overlay histogram showing THP1 cells stained with ab97426 (red line). The cells were fixed with 80% methanol (5 min) and incubated in 1x PBS / 10% normal goat serum / 0.3M glycine to block non-specific protein-protein interactions. The cells were then incubated with the antibody (ab97426, 1µg/1x10⁶ cells) for 30 min at 22°C. The secondary antibody used was Alexa Fluor® 488 goat anti-mouse IgG (H&L) (ab150113) at 1/2000 dilution for 30 min at 22°C. Isotype control antibody (black line) was mouse IgG1 [ICIGG1] (ab91353, 1µg/1x10⁶ cells) used under the same conditions. Unlabelled sample (blue line) was also used as a control. Acquisition of >5,000 events were collected using a 20mW Argon ion laser (488nm) and 525/30 bandpass filter. Please note that Abcam do not have any data for use of this antibody on non-fixed cells. We welcome any customer feedback.

Please note: All products are "FOR RESEARCH USE ONLY. NOT FOR USE IN DIAGNOSTIC PROCEDURES"

Our Abpromise to you: Quality guaranteed and expert technical support

- Replacement or refund for products not performing as stated on the datasheet
- Valid for 12 months from date of delivery
- Response to your inquiry within 24 hours
- We provide support in Chinese, English, French, German, Japanese and Spanish
- Extensive multi-media technical resources to help you
- We investigate all quality concerns to ensure our products perform to the highest standards

If the product does not perform as described on this datasheet, we will offer a refund or replacement. For full details of the Abpromise, please visit <https://www.abcam.com/abpromise> or contact our technical team.

Terms and conditions

- Guarantee only valid for products bought direct from Abcam or one of our authorized distributors