

Product datasheet

Anti-SIGLEC6 antibody ab199105

2 Images

Overview

| | |
|----------------------------|---|
| Product name | Anti-SIGLEC6 antibody |
| Description | Rabbit polyclonal to SIGLEC6 |
| Host species | Rabbit |
| Tested applications | Suitable for: IHC-P, WB |
| Species reactivity | Reacts with: Human |
| Immunogen | Synthetic peptide corresponding to Human SIGLEC6. (Near the C terminal; NP_001171018) Database link: O43699-6 |
| Positive control | Human placenta tissue lysate; Human thyroid cancer tissue. |
| General notes | <p>The Life Science industry has been in the grips of a reproducibility crisis for a number of years. Abcam is leading the way in addressing this with our range of recombinant monoclonal antibodies and knockout edited cell lines for gold-standard validation. Please check that this product meets your needs before purchasing.</p> <p>If you have any questions, special requirements or concerns, please send us an inquiry and/or contact our Support team ahead of purchase. Recommended alternatives for this product can be found below, along with publications, customer reviews and Q&As</p> |

Properties

| | |
|-----------------------------|---|
| Form | Liquid |
| Storage instructions | Shipped at 4°C. Store at +4°C short term (1-2 weeks). Upon delivery aliquot. Store at -20°C long term. Avoid freeze / thaw cycle. |
| Storage buffer | pH: 7.4 Preservative: 0.05% Sodium azide Constituents: 50% Glycerol (glycerin, glycerine), 49% PBS |
| Purity | Immunogen affinity purified |
| Clonality | Polyclonal |
| Isotype | IgG |

Applications

The Abpromise guarantee

Our [Abpromise guarantee](#) covers the use of ab199105 in the following tested applications.

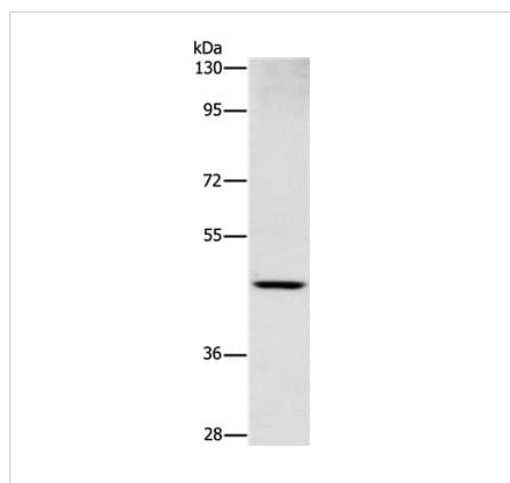
The application notes include recommended starting dilutions; optimal dilutions/concentrations should be determined by the end user.

| Application | Abreviews | Notes |
|-------------|-----------|---|
| IHC-P | | 1/50 - 1/200. |
| WB | | 1/500 - 1/2000. Predicted molecular weight: 44, 50 kDa. |

Target

| | |
|------------------------------|---|
| Function | Putative adhesion molecule that mediates sialic-acid dependent binding to cells. Binds to alpha-2,6-linked sialic acid. The sialic acid recognition site may be masked by cis interactions with sialic acids on the same cell surface. |
| Tissue specificity | Expressed at high levels in placenta (cyto- and syncytiotrophoblastic cells) and at lower levels in spleen, peripheral blood leukocytes (predominantly B-cells) and small intestine. |
| Sequence similarities | Belongs to the immunoglobulin superfamily. SIGLEC (sialic acid binding Ig-like lectin) family. Contains 2 Ig-like C2-type (immunoglobulin-like) domains. Contains 1 Ig-like V-type (immunoglobulin-like) domain. |
| Domain | Contains 1 copy of a cytoplasmic motif that is referred to as the immunoreceptor tyrosine-based inhibitor motif (ITIM). This motif is involved in modulation of cellular responses. The phosphorylated ITIM motif can bind the SH2 domain of several SH2-containing phosphatases. |
| Cellular localization | Secreted and Cell membrane. |

Images

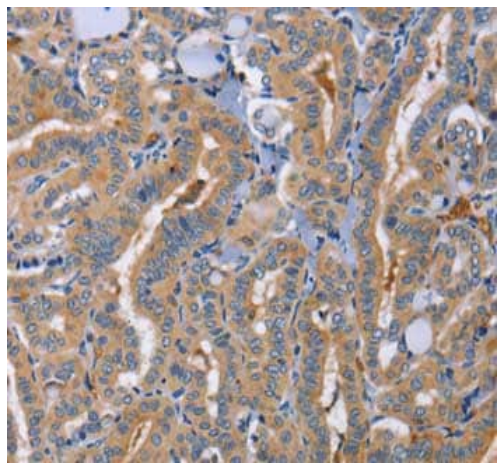


Anti-SIGLEC6 antibody (ab199105) at 1/1000 dilution + Human placenta tissue lysate at 40 µg

Predicted band size: 44, 50 kDa

Gel: 8% SDS-PAGE.

Western blot - Anti-SIGLEC6 antibody (ab199105)



Immunohistochemical analysis of paraffin-embedded Human thyroid cancer tissue labeling SIGLEC6 with ab199105 at 1/70 dilution.

Immunohistochemistry (Formalin/PFA-fixed paraffin-embedded sections) - Anti-SIGLEC6 antibody (ab199105)

Please note: All products are "FOR RESEARCH USE ONLY. NOT FOR USE IN DIAGNOSTIC PROCEDURES"

Our Abpromise to you: Quality guaranteed and expert technical support

- Replacement or refund for products not performing as stated on the datasheet
- Valid for 12 months from date of delivery
- Response to your inquiry within 24 hours

- We provide support in Chinese, English, French, German, Japanese and Spanish
- Extensive multi-media technical resources to help you
- We investigate all quality concerns to ensure our products perform to the highest standards

If the product does not perform as described on this datasheet, we will offer a refund or replacement. For full details of the Abpromise, please visit <https://www.abcam.com/abpromise> or contact our technical team.

Terms and conditions

- Guarantee only valid for products bought direct from Abcam or one of our authorized distributors