

Product datasheet

Anti-SIGLEC6 antibody ab224406

4 Images

Overview

Product name	Anti-SIGLEC6 antibody
Description	Rabbit polyclonal to SIGLEC6
Host species	Rabbit
Tested applications	Suitable for: IHC-P
Species reactivity	Reacts with: Human
Immunogen	Recombinant fragment corresponding to Human SIGLEC6 aa 53-176. Sequence: LPTTLPASYGYGYWFLEGADVPVATNDPDEEVQEETRG RFHLLWDPRRK NCSLSIRDARRRDNAAFFRLKSKWMKYGYTSSKLSVRV MALTHRPNISIPGTLESGHPSNLTCVPPWVCEQGT

Database link: [O43699](#)

 [Run BLAST with](#)

 [Run BLAST with](#)

Positive control IHC-P: Human placenta tissue.

General notes

Reproducibility is key to advancing scientific discovery and accelerating scientists' next breakthrough.

Abcam is leading the way with our range of recombinant antibodies, knockout-validated antibodies and knockout cell lines, all of which support improved reproducibility.

We are also planning to innovate the way in which we present recommended applications and species on our product datasheets, so that only applications & species that have been tested in our own labs, our suppliers or by selected trusted collaborators are covered by our Abpromise™ guarantee.

In preparation for this, we have started to update the applications & species that this product is Abpromise guaranteed for.

We are also updating the applications & species that this product has been “predicted to work with,” however this information is not covered by our Abpromise guarantee.

Applications & species from publications and Abreviews that have not been tested in our own labs or in those of our suppliers are not covered by the Abpromise guarantee.

Please check that this product meets your needs before purchasing. If you have any questions, special requirements or concerns, please send us an inquiry and/or contact our Support team ahead of purchase. Recommended alternatives for this product can be found below, as well as

customer reviews and Q&As.

Properties

Form	Liquid
Storage instructions	Shipped at 4°C. Store at +4°C short term (1-2 weeks). Upon delivery aliquot. Store at -20°C long term. Avoid freeze / thaw cycle.
Storage buffer	pH: 7.20 Preservative: 0.02% Sodium azide Constituents: 40% Glycerol (glycerin, glycerine), PBS
Purity	Immunogen affinity purified
Clonality	Polyclonal
Isotype	IgG

Applications

Our [Abpromise guarantee](#) covers the use of **ab224406** in the following tested applications.

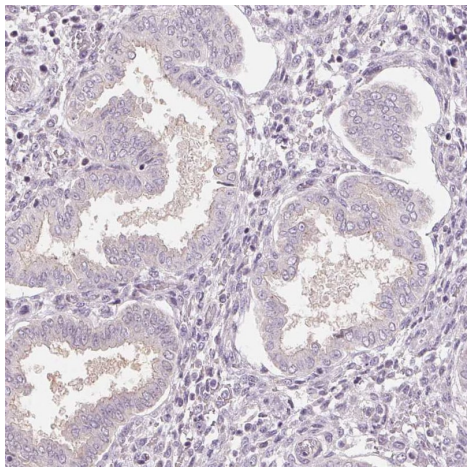
The application notes include recommended starting dilutions; optimal dilutions/concentrations should be determined by the end user.

Application	Abreviews	Notes
IHC-P		1/1000 - 1/2500. Perform heat mediated antigen retrieval with Tris/EDTA buffer pH 9.0 before commencing with IHC staining protocol.

Target

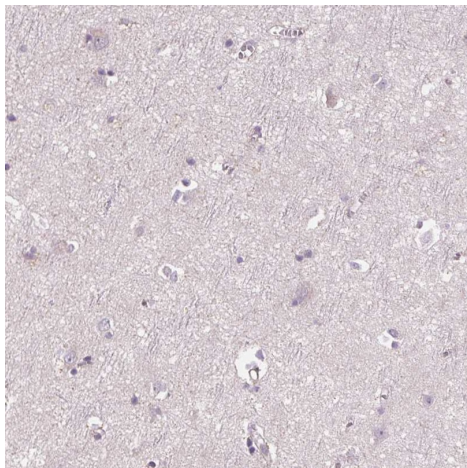
Function	Putative adhesion molecule that mediates sialic-acid dependent binding to cells. Binds to alpha-2,6-linked sialic acid. The sialic acid recognition site may be masked by cis interactions with sialic acids on the same cell surface.
Tissue specificity	Expressed at high levels in placenta (cyto- and syncytiotrophoblastic cells) and at lower levels in spleen, peripheral blood leukocytes (predominantly B-cells) and small intestine.
Sequence similarities	Belongs to the immunoglobulin superfamily. SIGLEC (sialic acid binding Ig-like lectin) family. Contains 2 Ig-like C2-type (immunoglobulin-like) domains. Contains 1 Ig-like V-type (immunoglobulin-like) domain.
Domain	Contains 1 copy of a cytoplasmic motif that is referred to as the immunoreceptor tyrosine-based inhibitor motif (ITIM). This motif is involved in modulation of cellular responses. The phosphorylated ITIM motif can bind the SH2 domain of several SH2-containing phosphatases.
Cellular localization	Secreted and Cell membrane.

Images



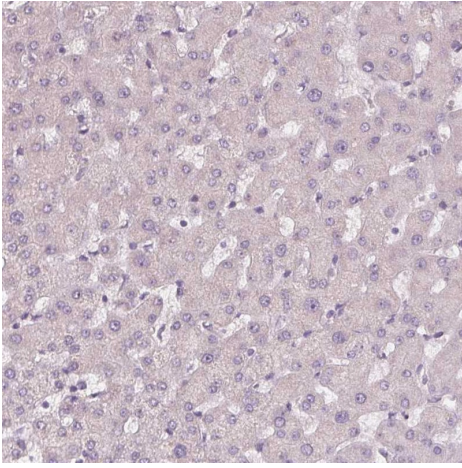
Paraffin-embedded human endometrium stained for SIGLEC6 using ab224406 at 1/1000 dilution in immunohistochemical analysis. Shows no positivity in glandular cells as expected.

Immunohistochemistry (Formalin/PFA-fixed paraffin-embedded sections) - Anti-SIGLEC6 antibody (ab224406)



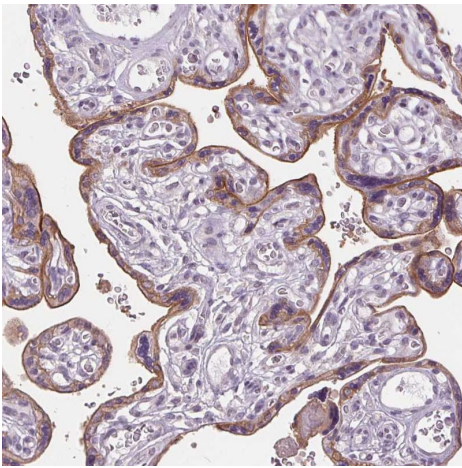
Paraffin-embedded human cerebral cortex stained for SIGLEC6 using ab224406 at 1/1000 dilution in immunohistochemical analysis. Shows no positivity in neurons as expected.

Immunohistochemistry (Formalin/PFA-fixed paraffin-embedded sections) - Anti-SIGLEC6 antibody (ab224406)



Immunohistochemistry (Formalin/PFA-fixed paraffin-embedded sections) - Anti-SIGLEC6 antibody (ab224406)

Paraffin-embedded human liver stained for SIGLEC6 using ab224406 at 1/1000 dilution in immunohistochemical analysis. Shows no positivity in hepatocytes as expected.



Immunohistochemistry (Formalin/PFA-fixed paraffin-embedded sections) - Anti-SIGLEC6 antibody (ab224406)

Paraffin-embedded human placenta stained for SIGLEC6 using ab224406 at 1/1000 dilution in immunohistochemical analysis. Shows moderate cytoplasmic and membranous positivity in trophoblastic cells.

Please note: All products are "FOR RESEARCH USE ONLY. NOT FOR USE IN DIAGNOSTIC PROCEDURES"

Our Abpromise to you: Quality guaranteed and expert technical support

- Replacement or refund for products not performing as stated on the datasheet
- Valid for 12 months from date of delivery
- Response to your inquiry within 24 hours
- We provide support in Chinese, English, French, German, Japanese and Spanish
- Extensive multi-media technical resources to help you
- We investigate all quality concerns to ensure our products perform to the highest standards

If the product does not perform as described on this datasheet, we will offer a refund or replacement. For full details of the Abpromise,

please visit <https://www.abcam.com/abpromise> or contact our technical team.

Terms and conditions

- Guarantee only valid for products bought direct from Abcam or one of our authorized distributors