

Product datasheet

Anti-SIK1 (phospho T182) + SIK2 (phospho T175) + SIK3 (phospho T163) antibody [EPR19196] ab199474

Recombinant RabMAb

★★★★★ 2 Abreviews 4 Images

Overview

Product name	Anti-SIK1 (phospho T182) + SIK2 (phospho T175) + SIK3 (phospho T163) antibody [EPR19196]
Description	Rabbit monoclonal [EPR19196] to SIK1 (phospho T182) + SIK2 (phospho T175) + SIK3 (phospho T163)
Host species	Rabbit
Specificity	Expected to react with Snf1k (when phosphorylated at T182) and SIK3 ((when phosphorylated at T163).
Tested applications	Suitable for: Dot blot, WB
Species reactivity	Reacts with: Human
Immunogen	Synthetic peptide within Human SIK2 aa 150-250. The exact sequence is proprietary. aa177 modified from C to S Database link: Q9H0K1
Positive control	WB: HEK-293T transfected with human Snf1k or Snf1k2 or SIK3 (WT) whole cell lysate.
General notes	This product was previously labelled as Snf1k2, Snf1k+Snf1k2+SIK3

This product is a recombinant monoclonal antibody, which offers several advantages including:

- High batch-to-batch consistency and reproducibility
- Improved sensitivity and specificity
- Long-term security of supply
- Animal-free production

For more information [see here](#).

Our RabMAb[®] technology is a patented hybridoma-based technology for making rabbit monoclonal antibodies. For details on our patents, please refer to [RabMAb[®] patents](#).

Properties

Form	Liquid
Storage instructions	Shipped at 4°C. Store at +4°C short term (1-2 weeks). Upon delivery aliquot. Store at -20°C long term. Avoid freeze / thaw cycle.

Storage buffer	Preservative: 0.01% Sodium azide Constituents: 59% PBS, 40% Glycerol, 0.05% BSA
Purity	Protein A purified
Clonality	Monoclonal
Clone number	EPR19196
Isotype	IgG

Applications

Our [Abpromise guarantee](#) covers the use of **ab199474** in the following tested applications.

The application notes include recommended starting dilutions; optimal dilutions/concentrations should be determined by the end user.

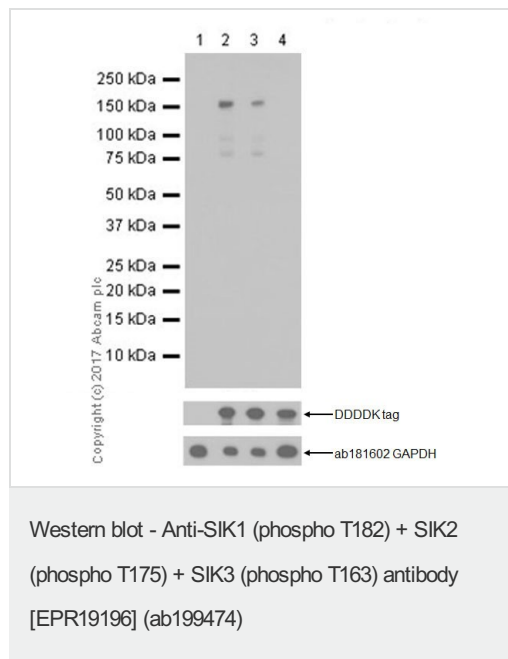
Application	Abreviews	Notes
Dot blot		1/1000.
WB	★★★★★	1/1000. Detects a band of approximately 85, 104, 140 kDa.

Target

Cellular localization

Snf1lk: Cytoplasm. Nucleus. Translocates to the cytoplasm on phosphorylation where it binds binding to YWHAZ. Snf1lk2: Cytoplasm. SIK3: Cytoplasm

Images



All lanes : Anti-SIK1 (phospho T182) + SIK2 (phospho T175) + SIK3 (phospho T163) antibody [EPR19196] (ab199474) at 1/1000 dilution

Lane 1 : HEK-293T (human epithelial cell line from embryonic kidney transformed with large T antigen) transfected with empty vector (control), whole cell lysate

Lane 2 : HEK-293T transfected with a human SIK3 (WT) expression vector, whole cell lysate

Lane 3 : HEK-293T transfected with a human SIK3 (WT) expression vector, then treated with alkaline phosphatase for 1 hour, whole cell lysate

Lane 4 : HEK-293T transfected with a human SIK3 T163A mutant expression vector, whole cell lysate

Lysates/proteins at 10 µg per lane.

Secondary

All lanes : Goat Anti-Rabbit IgG H&L (HRP) ([ab97051](#)) at 1/100000 dilution

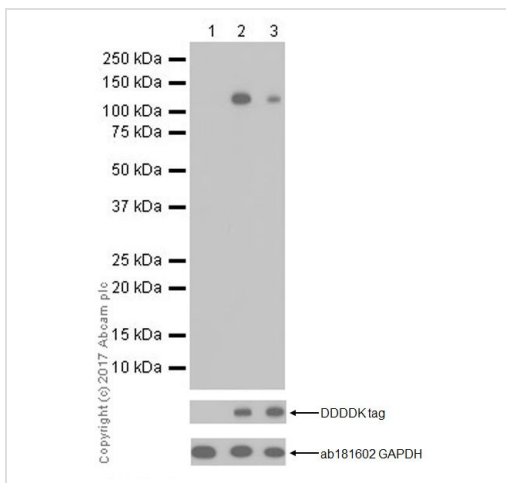
Observed band size: 140 kDa

[why is the actual band size different from the predicted?](#)

Exposure time: 1 minute

Blocking and dilution buffer and concentration: 5% NFDm/TBST.

The plasmids were kindly provided by our collaborator Dr. Yi Rao, Peking University.



Western blot - Anti-SIK1 (phospho T182) + SIK2 (phospho T175) + SIK3 (phospho T163) antibody [EPR19196] ([ab199474](#))

All lanes : Anti-SIK1 (phospho T182) + SIK2 (phospho T175) + SIK3 (phospho T163) antibody [EPR19196] ([ab199474](#)) at 1/1000 dilution

Lane 1 : HEK-293T (human epithelial cell line from embryonic kidney transformed with large T antigen) transfected with an empty vector (control), whole cell lysate

Lane 2 : HEK-293T transfected with a human SIK2 (WT) expression vector, whole cell lysate

Lane 3 : HEK-293T transfected with a human SIK2 (WT) expression vector, then treated with alkaline phosphatase for 1 hour, whole cell lysate

Lysates/proteins at 10 µg per lane.

Secondary

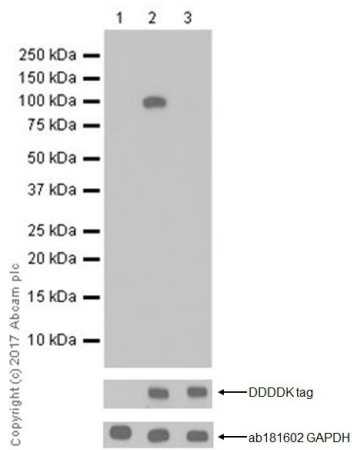
All lanes : Goat Anti-Rabbit IgG H&L (HRP) ([ab97051](#)) at 1/20000 dilution

Observed band size: 104 kDa [why is the actual band size different from the predicted?](#)

Exposure time: 30 seconds

Blocking and dilution buffer and concentration: 5% NFDm/TBST.

The plasmids were kindly provided by our collaborator Dr. Yi Rao, Peking University.



Western blot - Anti-SIK1 (phospho T182) + SIK2 (phospho T175) + SIK3 (phospho T163) antibody [EPR19196] (ab199474)

All lanes : Anti-SIK1 (phospho T182) + SIK2 (phospho T175) + SIK3 (phospho T163) antibody [EPR19196] (ab199474) at 1/5000 dilution

Lane 1 : HEK-293T (human epithelial cell line from embryonic kidney transformed with large T antigen) transfected with an empty vector (control), whole cell lysate

Lane 2 : HEK-293T transfected with a human SIK1 (WT) expression vector, whole cell lysate

Lane 3 : HEK-293T transfected with a human SIK1 (WT) expression vector, then treated with alkaline phosphatase for 1 hour, whole cell lysate

Lysates/proteins at 10 µg per lane.

Secondary

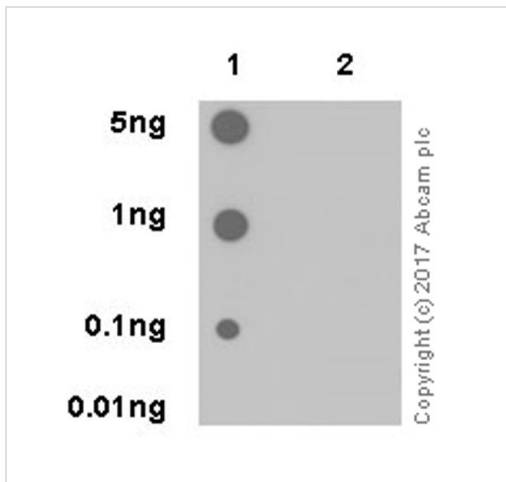
All lanes : Goat Anti-Rabbit IgG H&L (HRP) (ab97051) at 1/100000 dilution

Observed band size: 85 kDa [why is the actual band size different from the predicted?](#)

Exposure time: 3 minutes

Blocking and dilution buffer and concentration: 5% NFDN/TBST.

The plasmids were kindly provided by our collaborator Dr. Yi Rao, Peking University.



Dot blot analysis of Snf1lk2 (phospho T175) labeled with ab199474 at 1/1,000 dilution.

Lane 1: Snf1lk2 (phospho T175) peptide

Lane 2: Snf1lk2 non-phospho peptide

Goat Anti-Rabbit IgG H&L (HRP) ([ab97051](#)) at 1/100,000 dilution was used as secondary antibody.

Blocking/Dilution buffer: 5% NFD/MTBST.

Exposure time: 3 minutes.

Dot Blot - Anti-SIK1 (phospho T182) + SIK2 (phospho T175) + SIK3 (phospho T163) antibody [EPR19196] (ab199474)

Please note: All products are "FOR RESEARCH USE ONLY. NOT FOR USE IN DIAGNOSTIC PROCEDURES"

Our Abpromise to you: Quality guaranteed and expert technical support

- Replacement or refund for products not performing as stated on the datasheet
- Valid for 12 months from date of delivery
- Response to your inquiry within 24 hours
- We provide support in Chinese, English, French, German, Japanese and Spanish
- Extensive multi-media technical resources to help you
- We investigate all quality concerns to ensure our products perform to the highest standards

If the product does not perform as described on this datasheet, we will offer a refund or replacement. For full details of the Abpromise, please visit <https://www.abcam.com/abpromise> or contact our technical team.

Terms and conditions

- Guarantee only valid for products bought direct from Abcam or one of our authorized distributors