

## Product datasheet

# Anti-SIPA1L1 antibody ab91586

[3 Images](#)

### Overview

---

<b>Product name</b>	Anti-SIPA1L1 antibody
<b>Description</b>	Rabbit polyclonal to SIPA1L1
<b>Host species</b>	Rabbit
<b>Specificity</b>	ab91586 is specific for SIPA1L1 and will not recognize the other SIPA1 family proteins.
<b>Tested applications</b>	<b>Suitable for:</b> IHC-P, WB
<b>Species reactivity</b>	<b>Reacts with:</b> Rat, Human
<b>Immunogen</b>	Synthetic peptide corresponding to Human SIPA1L1 (N terminal). The antibody was raised against a 16 amino acid synthetic peptide from near the amino terminus of human SIPA1L1. It is located within amino acids 40 to 90. Database link: <a href="#">O43166</a>
<b>Positive control</b>	Rat and human brain tissue lysate
<b>General notes</b>	<p>Reproducibility is key to advancing scientific discovery and accelerating scientists' next breakthrough.</p> <p>Abcam is leading the way with our range of recombinant antibodies, knockout-validated antibodies and knockout cell lines, all of which support improved reproducibility.</p> <p>We are also planning to innovate the way in which we present recommended applications and species on our product datasheets, so that only applications &amp; species that have been tested in our own labs, our suppliers or by selected trusted collaborators are covered by our Abpromise™ guarantee.</p> <p>In preparation for this, we have started to update the applications &amp; species that this product is Abpromise guaranteed for.</p> <p>We are also updating the applications &amp; species that this product has been “predicted to work with,” however this information is not covered by our Abpromise guarantee.</p> <p>Applications &amp; species from publications and Abreviews that have not been tested in our own labs or in those of our suppliers are not covered by the Abpromise guarantee.</p> <p>Please check that this product meets your needs before purchasing. If you have any questions, special requirements or concerns, please send us an inquiry and/or contact our Support team ahead of purchase. Recommended alternatives for this product can be found below, as well as customer reviews and Q&amp;As.</p>

### Properties

## Properties

---

<b>Form</b>	Liquid
<b>Storage instructions</b>	Shipped at 4°C. Store at +4°C.
<b>Storage buffer</b>	pH: 7.2 Preservative: 0.02% Sodium azide Constituent: PBS
<b>Purity</b>	Immunogen affinity purified
<b>Clonality</b>	Polyclonal
<b>Isotype</b>	IgG

## Applications

---

Our [Abpromise guarantee](#) covers the use of **ab91586** in the following tested applications.

The application notes include recommended starting dilutions; optimal dilutions/concentrations should be determined by the end user.

Application	Abreviews	Notes
IF		Use a concentration of 20 µg/ml.
IHC-P		Use a concentration of 5 µg/ml.
WB		Use a concentration of 0.5 - 1 µg/ml. Predicted molecular weight: 200 kDa.

## Target

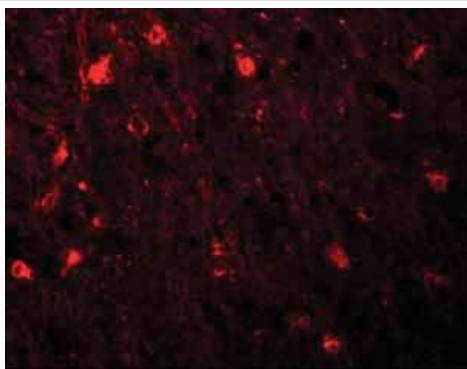
---

<b>Relevance</b>	SIPA1L1 (Signal-induced proliferation associated-like protein 1) is a member of the SIPA1 family of RapGAPs. SIPA1L1 was initially identified as a binding partner and degradation target of the E6 oncoprotein of high-risk papillomaviruses. Recently, it was discovered that Casein kinase I epsilon (CKIε), a Wnt-regulated kinase that regulates Wnt/b-catenin signaling, also can bind to the carboxy-terminus of SIPA1L1. CKIε phosphorylates SIPA1L1, thereby reducing its stability and alleviating its inhibition of Rap1, a protein required for Wnt8/CKIε-mediated gastrulation during embryogenesis, suggesting SIPA1L1 plays important roles in embryo development as well as control of cell proliferation.
------------------	--

<b>Cellular localization</b>	Intracellular
------------------------------	---------------

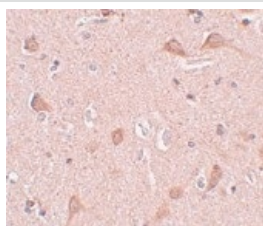
## Images

---



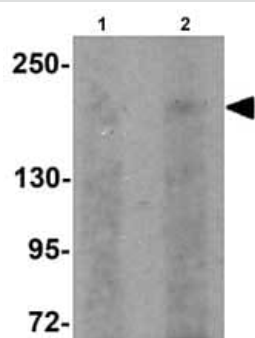
Immunofluorescence - Anti-SIPA1L1 antibody  
(ab91586)

Immunofluorescence of SIPA1L1 in Human brain tissue with  
ab91586 at 20 ug/mL.



Immunohistochemistry (Formalin/PFA-fixed paraffin-  
embedded sections) - Anti-SIPA1L1 antibody  
(ab91586)

Immunohistochemistry of Human brain tissue with ab91586 at 5  
 $\mu\text{g/mL}$ .



Western blot - Anti-SIPA1L1 antibody (ab91586)

**Lane 1 :** Anti-SIPA1L1 antibody (ab91586) at 0.5  $\mu\text{g/ml}$

**Lane 2 :** Anti-SIPA1L1 antibody (ab91586) at 1  $\mu\text{g/ml}$

**All lanes :** Rat brain tissue lysate

Lysates/proteins at 15  $\mu\text{g}$  per lane.

**Predicted band size:** 200 kDa

**Please note:** All products are "FOR RESEARCH USE ONLY. NOT FOR USE IN DIAGNOSTIC PROCEDURES"

## **Our Abpromise to you: Quality guaranteed and expert technical support**

---

- Replacement or refund for products not performing as stated on the datasheet
- Valid for 12 months from date of delivery
- Response to your inquiry within 24 hours
  
- We provide support in Chinese, English, French, German, Japanese and Spanish
- Extensive multi-media technical resources to help you
- We investigate all quality concerns to ensure our products perform to the highest standards

If the product does not perform as described on this datasheet, we will offer a refund or replacement. For full details of the Abpromise, please visit <https://www.abcam.com/abpromise> or contact our technical team.

## **Terms and conditions**

---

- Guarantee only valid for products bought direct from Abcam or one of our authorized distributors