




Product datasheet

Anti-Skeletrophin / Mib2 antibody ab233069

4 Images

Overview

Product name	Anti-Skeletrophin / Mib2 antibody
Description	Rabbit polyclonal to Skeletrophin / Mib2
Host species	Rabbit
Tested applications	Suitable for: WB, IHC-P
Species reactivity	Reacts with: Rat, Human Predicted to work with: Mouse 
Immunogen	Recombinant fragment (His-T7-tag) corresponding to Rat Skeletrophin/ Mib2 aa 407-663. (NM_001005901.2; Expressed in E.coli). Sequence: ENKSSLSVALDKLRTQKSDPEHPGRLVVEAALGNVARAL DLLRRHPEQVD TKNQGR TALQVAAYLGQVELV RLLLQARASVDLLDEEGNT ALHYTAMGNQ PEATRLLL SAGCGVDAQNGTRSTALHVAVQ RGFLEVVKIL CEHGCDVNLP DAHADTPLHSAISAGAGASSMEVLTEVPGIDVTATNSQGF TLLHHASLK GHVLAVRKILARARQLVDAKKEDGFTALHLAALNNHREVA QVLIREGRC D VNVRNRK <div style="text-align: right;">  Run BLAST with  Run BLAST with </div>
Positive control	WB: Recombinant rat Skeletrophin / Mib2 protein; HEK-293T and HeLa cell lysates. IHC-P: Rat brain tissue.
General notes	<p>Reproducibility is key to advancing scientific discovery and accelerating scientists' next breakthrough.</p> <p>Abcam is leading the way with our range of recombinant antibodies, knockout-validated antibodies and knockout cell lines, all of which support improved reproducibility.</p> <p>We are also planning to innovate the way in which we present recommended applications and species on our product datasheets, so that only applications & species that have been tested in our own labs, our suppliers or by selected trusted collaborators are covered by our Abpromise™ guarantee.</p> <p>In preparation for this, we have started to update the applications & species that this product is Abpromise guaranteed for.</p>

We are also updating the applications & species that this product has been “predicted to work with,” however this information is not covered by our Abpromise guarantee.

Applications & species from publications and Abreviews that have not been tested in our own labs or in those of our suppliers are not covered by the Abpromise guarantee.

Please check that this product meets your needs before purchasing. If you have any questions, special requirements or concerns, please send us an inquiry and/or contact our Support team ahead of purchase. Recommended alternatives for this product can be found below, as well as customer reviews and Q&As.

Properties

Form	Liquid
Storage instructions	Shipped at 4°C. Store at +4°C short term (1-2 weeks). Upon delivery aliquot. Store at -20°C long term. Avoid freeze / thaw cycle.
Storage buffer	pH: 7.40 Preservative: 0.02% Sodium azide Constituents: PBS, 50% Glycerol
Purity	Immunogen affinity purified
Purification notes	ab233069 was purified by antigen-specific affinity chromatography followed by Protein A affinity chromatography.
Clonality	Polyclonal
Isotype	IgG

Applications

Our [Abpromise guarantee](#) covers the use of **ab233069** in the following tested applications.

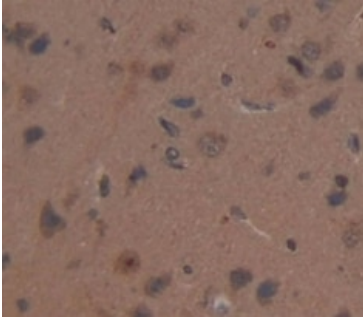
The application notes include recommended starting dilutions; optimal dilutions/concentrations should be determined by the end user.

Application	Abreviews	Notes
WB		Use a concentration of 0.2 - 2 µg/ml. Predicted molecular weight: 106 kDa.
IHC-P		Use a concentration of 5 - 20 µg/ml.

Target

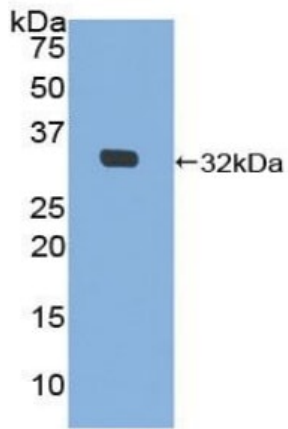
Relevance	Skeletrophin, also known as Mib2, is a homolog of the zebrafish protein Mindbomb. Skeletrophin is an E3 ubiquitin ligase, expressed mainly in skeletal muscle, which is downregulated in malignant melanoma.
Cellular localization	Cytoplasmic

Images



Immunohistochemistry (Formalin/PFA-fixed paraffin-embedded sections) - Anti-Skeletrophin / Mib2 antibody (ab233069)

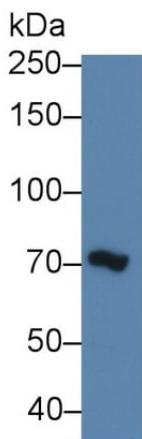
Formalin-fixed, paraffin-embedded rat brain tissue stained for Skeletrophin / Mib2 at 20 $\mu\text{g/ml}$ in immunohistochemical analysis. DAB staining.



Western blot - Anti-Skeletrophin / Mib2 antibody (ab233069)

Anti-Skeletrophin / Mib2 antibody (ab233069) at 2 $\mu\text{g/ml}$ + Recombinant rat Skeletrophin / Mib2 protein

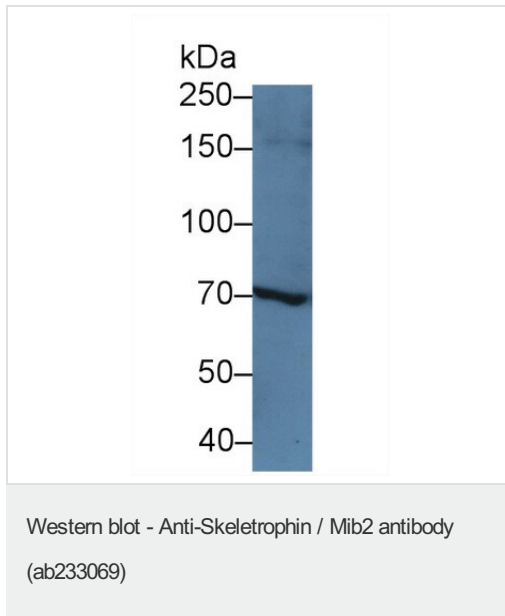
Predicted band size: 106 kDa



Western blot - Anti-Skeletrophin / Mib2 antibody (ab233069)

Anti-Skeletrophin / Mib2 antibody (ab233069) at 2 $\mu\text{g/ml}$ + HEK-293T (human epithelial cell line from embryonic kidney transformed with large T antigen) cell lysate

Predicted band size: 106 kDa



Anti-Skeletrophin / Mib2 antibody (ab233069) at 2 µg/ml + HeLa
(human epithelial cell line from cervix adenocarcinoma) cell lysate

Predicted band size: 106 kDa

Please note: All products are "FOR RESEARCH USE ONLY. NOT FOR USE IN DIAGNOSTIC PROCEDURES"

Our Abpromise to you: Quality guaranteed and expert technical support

- Replacement or refund for products not performing as stated on the datasheet
- Valid for 12 months from date of delivery
- Response to your inquiry within 24 hours
- We provide support in Chinese, English, French, German, Japanese and Spanish
- Extensive multi-media technical resources to help you
- We investigate all quality concerns to ensure our products perform to the highest standards

If the product does not perform as described on this datasheet, we will offer a refund or replacement. For full details of the Abpromise, please visit <https://www.abcam.com/abpromise> or contact our technical team.

Terms and conditions

- Guarantee only valid for products bought direct from Abcam or one of our authorized distributors