


Product datasheet

Anti-SLAIN1 antibody ab129502

2 Images

Overview

Product name	Anti-SLAIN1 antibody
Description	Rabbit polyclonal to SLAIN1
Host species	Rabbit
Tested applications	Suitable for: WB, IP
Species reactivity	Reacts with: Human Predicted to work with: Mouse, Rat, Rabbit, Horse, Guinea pig, Cow, Pig, Chimpanzee, Rhesus monkey, Orangutan, Elephant 
Immunogen	Synthetic peptide, corresponding to a region within amino acids 518-568 of Human SLAIN1 (NP_001035243.1).
Positive control	Whole cell lysate from 293T, Jurkat and HeLa cells.

Properties

Form	Liquid
Storage instructions	Shipped at 4°C. Store at +4°C.
Storage buffer	Preservative: 0.09% Sodium azide Constituent: 99% Tris citrate/phosphate pH 7 to 8.
Purity	Immunogen affinity purified
Clonality	Polyclonal
Isotype	IgG

Applications

Our [Abpromise guarantee](#) covers the use of **ab129502** in the following tested applications.

The application notes include recommended starting dilutions; optimal dilutions/concentrations should be determined by the end user.

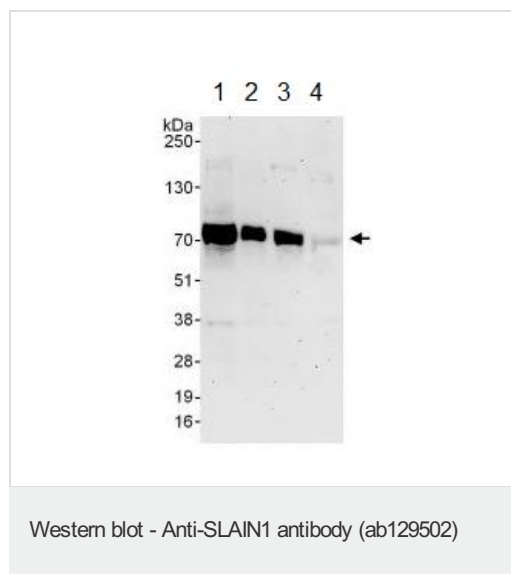
Application	Abreviews	Notes
WB		1/2000 - 1/10000. Predicted molecular weight: 61 kDa.

Application	Abreviews	Notes
IP		Use at 2-10 µg/mg of lysate.

Target

Tissue specificity	Expressed in embryonic stem cells.
Sequence similarities	Belongs to the SLAIN motif-containing family.

Images



All lanes : Anti-SLAIN1 antibody (ab129502) at 0.1 µg/ml

Lane 1 : Whole cell lysate from 293T cells at 50 µg

Lane 2 : Whole cell lysate from 293T cells at 15 µg

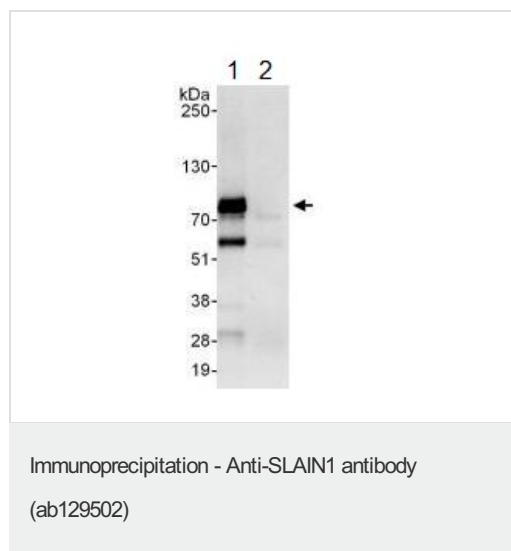
Lane 3 : Whole cell lysate from Jurkat cells at 50 µg

Lane 4 : Whole cell lysate from HeLa cells at 50 µg

Developed using the ECL technique.

Predicted band size: 61 kDa

Exposure time: 3 minutes



ab129502 at 1 µg/ml staining SLAIN1 by WB, following immunoprecipitation of whole cell lysate from 293T cells.

Lane 1; IP using ab129502 at 6 µg/mg lysate.

Lane 2; IP using control IgG.

1 mg of lysate was used for IP and 20% of IP was loaded. Detection utilised Chemiluminescence with a 30 second exposure.

Please note: All products are "FOR RESEARCH USE ONLY. NOT FOR USE IN DIAGNOSTIC PROCEDURES"

Our Abpromise to you: Quality guaranteed and expert technical support

- Replacement or refund for products not performing as stated on the datasheet
- Valid for 12 months from date of delivery
- Response to your inquiry within 24 hours

- We provide support in Chinese, English, French, German, Japanese and Spanish
- Extensive multi-media technical resources to help you
- We investigate all quality concerns to ensure our products perform to the highest standards

If the product does not perform as described on this datasheet, we will offer a refund or replacement. For full details of the Abpromise, please visit <https://www.abcam.com/abpromise> or contact our technical team.

Terms and conditions

- Guarantee only valid for products bought direct from Abcam or one of our authorized distributors