




## Product datasheet

# Anti-SLBP antibody ab221166

2 Images

### Overview

<b>Product name</b>	Anti-SLBP antibody
<b>Description</b>	Rabbit polyclonal to SLBP
<b>Host species</b>	Rabbit
<b>Tested applications</b>	<b>Suitable for:</b> ICC/IF, WB
<b>Species reactivity</b>	<b>Reacts with:</b> Human <b>Predicted to work with:</b> Mouse, Rat 
<b>Immunogen</b>	Recombinant fragment corresponding to Human SLBP aa 219-269. Sequence: ESSSEPQTSSQDDFDVYSGTPTKVRHMDSQVEDEFDLE ACLTEPLRDFSA M  Database link: <a href="#">Q14493</a>   <a href="#">Run BLAST with</a>  <a href="#">Run BLAST with</a>
<b>Positive control</b>	U-2 OS cells.
<b>General notes</b>	<p>Reproducibility is key to advancing scientific discovery and accelerating scientists' next breakthrough.</p> <p>Abcam is leading the way with our range of recombinant antibodies, knockout-validated antibodies and knockout cell lines, all of which support improved reproducibility.</p> <p>We are also planning to innovate the way in which we present recommended applications and species on our product datasheets, so that only applications &amp; species that have been tested in our own labs, our suppliers or by selected trusted collaborators are covered by our Abpromise™ guarantee.</p> <p>In preparation for this, we have started to update the applications &amp; species that this product is Abpromise guaranteed for.</p> <p>We are also updating the applications &amp; species that this product has been “predicted to work with,” however this information is not covered by our Abpromise guarantee.</p> <p>Applications &amp; species from publications and Abreviews that have not been tested in our own labs or in those of our suppliers are not covered by the Abpromise guarantee.</p> <p>Please check that this product meets your needs before purchasing. If you have any questions, special requirements or concerns, please send us an inquiry and/or contact our Support team ahead of purchase. Recommended alternatives for this product can be found below, as well as customer reviews and Q&amp;As.</p>

## Properties

<b>Form</b>	Liquid
<b>Storage instructions</b>	Shipped at 4°C. Store at +4°C short term (1-2 weeks). Upon delivery aliquot. Store at -20°C long term. Avoid freeze / thaw cycle.
<b>Storage buffer</b>	pH: 7.20 Preservative: 0.02% Sodium azide Constituents: 59% PBS, 40% Glycerol (glycerin, glycerine)
<b>Purity</b>	Immunogen affinity purified
<b>Clonality</b>	Polyclonal
<b>Isotype</b>	IgG

## Applications

Our [Abpromise guarantee](#) covers the use of **ab221166** in the following tested applications.

The application notes include recommended starting dilutions; optimal dilutions/concentrations should be determined by the end user.

Application	Abreviews	Notes
ICC/IF		Use a concentration of 0.25 - 2 µg/ml. Fixation/Permeabilization: PFA/Triton X-100.
WB		Use a concentration of 0.04 - 0.4 µg/ml. Predicted molecular weight: 31 kDa.

## Target

<b>Function</b>	RNA-binding protein involved in the histone pre-mRNA processing. Binds the stem-loop structure of replication-dependent histone pre-mRNAs and contributes to efficient 3'-end processing by stabilizing the complex between histone pre-mRNA and U7 small nuclear ribonucleoprotein (snRNP), via the histone downstream element (HDE). Plays an important role in targeting mature histone mRNA from the nucleus to the cytoplasm and to the translation machinery. Stabilizes mature histone mRNA and could be involved in cell-cycle regulation of histone gene expression. Involved in the mechanism by which growing oocytes accumulate histone proteins that support early embryogenesis. Binds to the 5' side of the stem-loop structure of histone pre-mRNAs.
<b>Tissue specificity</b>	Widely expressed.
<b>Sequence similarities</b>	Belongs to the SLBP family.
<b>Developmental stage</b>	Regulated during the cell cycle: protein levels increase 10 to 20 fold in the late G1 and decrease at the S/G2 border.
<b>Domain</b>	Amino acids 31-34, 96-99 and 241-244 are necessary for interaction with the Importin alpha/Importin beta receptor. The first 18 amino acids, amino acids 69-76 and 179-182 are necessary for interaction with TNPO3. Amino acids 31-34, 96-99 and 241-244 are necessary for nuclear localization.
<b>Post-translational</b>	Phosphorylated on Thr-61 and Thr-62 in the S-phase. Phosphorylation of Thr-62 by CDK1 primes

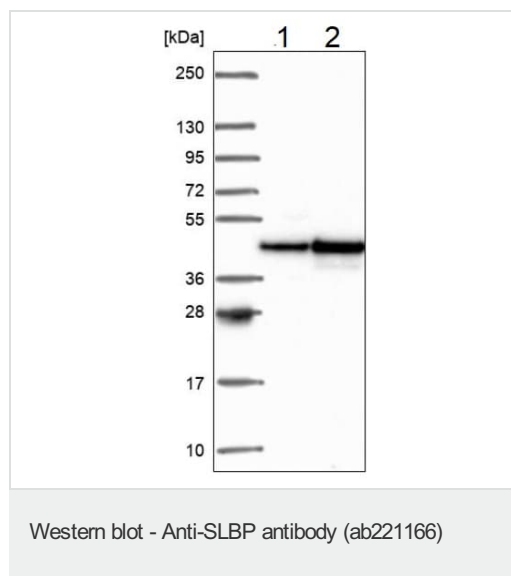
## modifications

phosphorylation of Thr-61 by CK2. Phosphorylation of Thr-62 is required for its degradation by the proteasome at the end of the S phase. Its degradation is not required for histone mRNA degradation at the end of the S phase. All the phosphorylated forms detected are present in the cytoplasm. Both unphosphorylated and phosphorylated forms bind the stem-loop structure of histone mRNAs.

## Cellular localization

Cytoplasm. Nucleus. Polyribosome-associated. Localizes predominantly in the nucleus at the G1/G2 phases and the beginning of S phase. Through the S phase, partially redistributes to the cytoplasm. Binding to histone mRNA is necessary for cytoplasmic localization. Shuttles between the nucleus and the cytoplasm. Imported in the nucleus by the Importin alpha/Importin beta receptor.

## Images

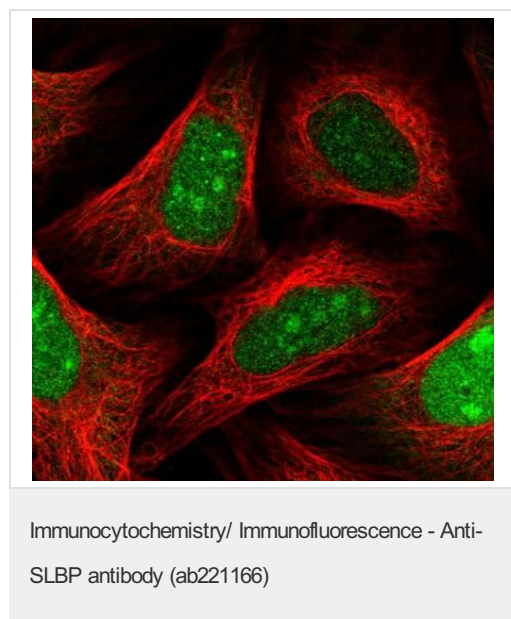


**All lanes :** Anti-SLBP antibody (ab221166) at 0.4 µg/ml

**Lane 1 :** RT4 (Human urinary bladder cancer cell line) whole cell lysate

**Lane 2 :** U-251 MG (formally U-373 MG) (Human brain glioma cell line) whole cell lysate

**Predicted band size:** 31 kDa



Immunocytochemical analysis of U-2 OS (Human bone osteosarcoma epithelial cell line) whole cells labeling SLBP (green) in the nucleus, nucleoli and cytosol with ab221166 at 2 µg/ml.

**Please note:** All products are "FOR RESEARCH USE ONLY. NOT FOR USE IN DIAGNOSTIC PROCEDURES"

## **Our Abpromise to you: Quality guaranteed and expert technical support**

---

- Replacement or refund for products not performing as stated on the datasheet
- Valid for 12 months from date of delivery
- Response to your inquiry within 24 hours
  
- We provide support in Chinese, English, French, German, Japanese and Spanish
- Extensive multi-media technical resources to help you
- We investigate all quality concerns to ensure our products perform to the highest standards

If the product does not perform as described on this datasheet, we will offer a refund or replacement. For full details of the Abpromise, please visit <https://www.abcam.com/abpromise> or contact our technical team.

## **Terms and conditions**

---

- Guarantee only valid for products bought direct from Abcam or one of our authorized distributors