

Product datasheet

Anti-SLC16A11 antibody ab230845

3 Images

Overview

Product name	Anti-SLC16A11 antibody
Description	Rabbit polyclonal to SLC16A11
Host species	Rabbit
Tested applications	Suitable for: IHC-P, WB, Flow Cyt
Species reactivity	Reacts with: Mouse, Human
Immunogen	Synthetic peptide within Human SLC16A11 aa 48-76 (N terminal) conjugated to keyhole limpet haemocyanin. The exact sequence is proprietary. Database link: Q8NCK7
Positive control	IHC-P: Human lung tissue. WB: Mouse brain and stomach lysates. Flow Cyt: WiDr cells.
General notes	<p>Reproducibility is key to advancing scientific discovery and accelerating scientists' next breakthrough.</p> <p>Abcam is leading the way with our range of recombinant antibodies, knockout-validated antibodies and knockout cell lines, all of which support improved reproducibility.</p> <p>We are also planning to innovate the way in which we present recommended applications and species on our product datasheets, so that only applications & species that have been tested in our own labs, our suppliers or by selected trusted collaborators are covered by our Abpromise™ guarantee.</p> <p>In preparation for this, we have started to update the applications & species that this product is Abpromise guaranteed for.</p> <p>We are also updating the applications & species that this product has been “predicted to work with,” however this information is not covered by our Abpromise guarantee.</p> <p>Applications & species from publications and Abreviews that have not been tested in our own labs or in those of our suppliers are not covered by the Abpromise guarantee.</p> <p>Please check that this product meets your needs before purchasing. If you have any questions, special requirements or concerns, please send us an inquiry and/or contact our Support team ahead of purchase. Recommended alternatives for this product can be found below, as well as customer reviews and Q&As.</p>

Properties

Form	Liquid
-------------	--------

Storage instructions	Shipped at 4°C. Store at +4°C short term (1-2 weeks). Upon delivery aliquot. Store at -20°C long term. Avoid freeze / thaw cycle.
Storage buffer	Preservative: 0.09% Sodium azide Constituent: PBS
Purity	Protein A purified
Clonality	Polyclonal
Isotype	IgG

Applications

Our [Abpromise guarantee](#) covers the use of **ab230845** in the following tested applications.

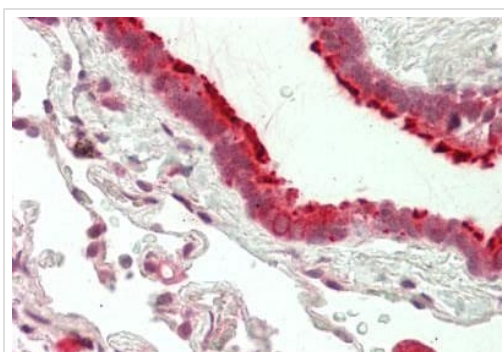
The application notes include recommended starting dilutions; optimal dilutions/concentrations should be determined by the end user.

Application	Abreviews	Notes
IHC-P		1/50 - 1/100.
WB		1/1000. Predicted molecular weight: 48 kDa.
Flow Cyt		1/10 - 1/50.

Target

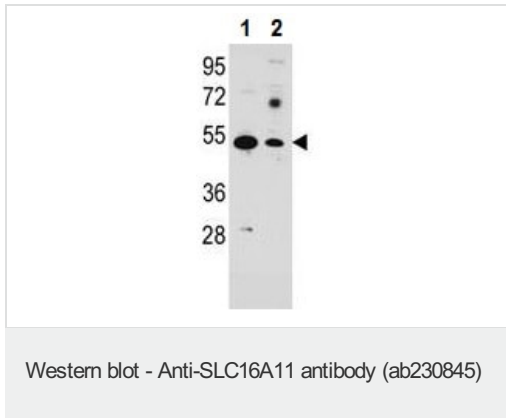
Function	Proton-linked monocarboxylate transporter. Catalyzes the rapid transport across the plasma membrane of many monocarboxylates.
Sequence similarities	Belongs to the major facilitator superfamily. Monocarboxylate porter (TC 2.A.1.13) family.
Cellular localization	Cell membrane.

Images



Formalin-fixed, paraffin-embedded human lung tissue stained for SLC16A11 using ab230845 at 1/50 dilution in immunohistochemical analysis.

Immunohistochemistry (Formalin/PFA-fixed paraffin-embedded sections) - Anti-SLC16A11 antibody (ab230845)



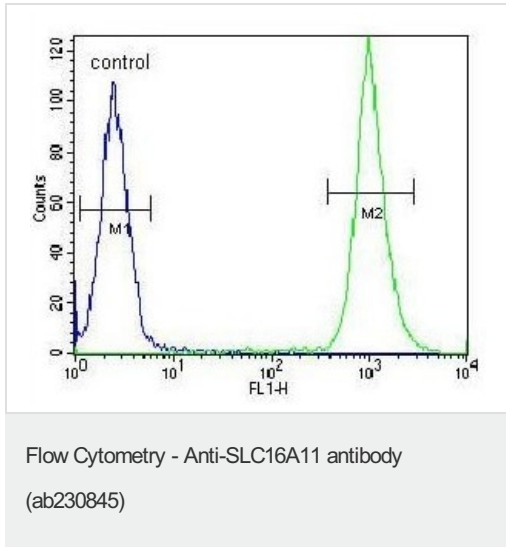
All lanes : Anti-SLC16A11 antibody (ab230845) at 1/1000 dilution

Lane 1 : Mouse brain lysate

Lane 2 : Mouse stomach lysate

Lysates/proteins at 35 µg per lane.

Predicted band size: 48 kDa



Flow cytometric analysis of WiDr cells labeling SLC16A11 with ab230845 at 1/10 dilution (green) compared with a negative control (blue). FITC-conjugated goat-anti-rabbit secondary antibodies were used for the analysis.

Please note: All products are "FOR RESEARCH USE ONLY. NOT FOR USE IN DIAGNOSTIC PROCEDURES"

Our Abpromise to you: Quality guaranteed and expert technical support

- Replacement or refund for products not performing as stated on the datasheet
- Valid for 12 months from date of delivery
- Response to your inquiry within 24 hours
- We provide support in Chinese, English, French, German, Japanese and Spanish
- Extensive multi-media technical resources to help you
- We investigate all quality concerns to ensure our products perform to the highest standards

If the product does not perform as described on this datasheet, we will offer a refund or replacement. For full details of the Abpromise, please visit <https://www.abcam.com/abpromise> or contact our technical team.

Terms and conditions

- Guarantee only valid for products bought direct from Abcam or one of our authorized distributors