




Product datasheet

Anti-SLC19A3 antibody ab237630

2 Images

Overview

Product name	Anti-SLC19A3 antibody
Description	Rabbit polyclonal to SLC19A3
Host species	Rabbit
Tested applications	Suitable for: WB, ICC/IF
Species reactivity	Reacts with: Human Predicted to work with: Cynomolgus monkey 
Immunogen	Recombinant fragment corresponding to Human SLC19A3 aa 191-282. Sequence: PMPKKSMMFFHAKPSREIKKSSSVNPVLEETHEGEAPG CEEQKPTSEILST SGKLNKGQLNSLKPSNVTVDVQWFQDLKECYSSK RLFYWS Database link: Q9BZV2  Run BLAST with  Run BLAST with
Positive control	WB: SH-SY5Y, HepG2, HEK-293 and HeLa whole cell lysate (ab150035). ICC/IF: HepG2 cells.

Properties

Form	Liquid
Storage instructions	Shipped at 4°C. Store at +4°C short term (1-2 weeks). Upon delivery aliquot. Store at -20°C long term. Avoid freeze / thaw cycle.
Storage buffer	pH: 7.40 Preservative: 0.03% Proclin Constituents: 50% Glycerol, PBS
Purity	Protein G purified
Purification notes	Purity greater than 95%.
Clonality	Polyclonal
Isotype	IgG

Applications

Our [Abpromise guarantee](#) covers the use of **ab237630** in the following tested applications.

The application notes include recommended starting dilutions; optimal dilutions/concentrations should be determined by the end user.

Application	Abreviews	Notes
WB		1/500 - 1/5000. Predicted molecular weight: 56 kDa.
ICC/IF		1/50 - 1/200.

Target

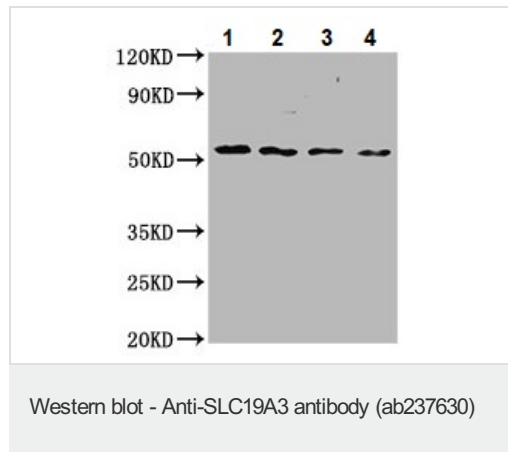
Relevance

SLC19A3 is a member of the reduced folate family of micronutrient transporter genes. It is a ubiquitously expressed transmembrane thiamine transporter that lacks folate transport activity yet mediates high affinity thiamine uptake propably via a proton anti-port mechanism. Mutations in this gene cause biotin-responsive basal ganglia disease (BBGD); a recessive disorder manifested in childhood that progresses to chronic encephalopathy, dystonia, quadriparesis, and death if untreated. Patients with BBGD have bilateral necrosis in the head of the caudate nucleus and in the putamen. Mutations in this gene also cause a Wernicke's-like encephalopathy.

Cellular localization

Plasma membrane

Images



All lanes : Anti-SLC19A3 antibody (ab237630) at 1/500 dilution

Lane 1 : SH-SY5Y (human neuroblastoma cell line from bone marrow) whole cell lysate

Lane 2 : HepG2 (human liver hepatocellular carcinoma cell line) whole cell lysate

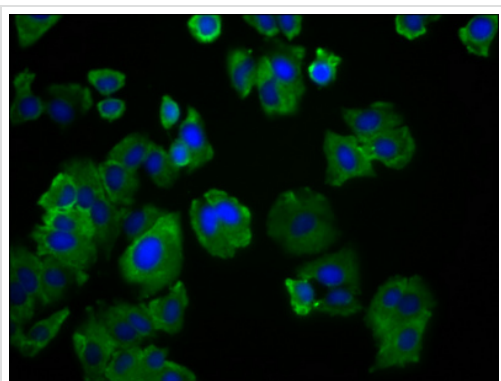
Lane 3 : HEK-293 (human epithelial cell line from embryonic kidney) whole cell lysate

Lane 4 : HeLa (human epithelial cell line from cervix adenocarcinoma) whole cell lysate

Secondary

All lanes : Goat polyclonal to rabbit IgG at 1/50000 dilution

Predicted band size: 56 kDa



Immunocytochemistry/ Immunofluorescence - Anti-SLC19A3 antibody (ab237630)

4% formaldehyde-fixed, 0.2% Triton X-100 permeabilized HepG2 (human liver hepatocellular carcinoma cell line) cells stained for SLC19A3 (green) using ab237630 at 1/166 dilution in ICC/IF, followed by Alexa Fluor 488[®] conjugated Goat Anti-Rabbit IgG (H+L). Counter-stained with DAPI.

Please note: All products are "FOR RESEARCH USE ONLY. NOT FOR USE IN DIAGNOSTIC PROCEDURES"

Our Abpromise to you: Quality guaranteed and expert technical support

- Replacement or refund for products not performing as stated on the datasheet
- Valid for 12 months from date of delivery
- Response to your inquiry within 24 hours
- We provide support in Chinese, English, French, German, Japanese and Spanish
- Extensive multi-media technical resources to help you
- We investigate all quality concerns to ensure our products perform to the highest standards

If the product does not perform as described on this datasheet, we will offer a refund or replacement. For full details of the Abpromise, please visit <https://www.abcam.com/abpromise> or contact our technical team.

Terms and conditions

- Guarantee only valid for products bought direct from Abcam or one of our authorized distributors