

Product datasheet

Anti-SLC22A2 antibody - C-terminal ab230629

2 Images

Overview

Product name	Anti-SLC22A2 antibody - C-terminal
Description	Rabbit polyclonal to SLC22A2 - C-terminal
Host species	Rabbit
Tested applications	Suitable for: WB, IHC-P
Species reactivity	Reacts with: Mouse, Rat, Human
Immunogen	Synthetic peptide corresponding to Human SLC22A2 (C terminal) conjugated to keyhole limpet haemocyanin. Database link: O15244
Positive control	IHC-P: Human kidney tissue. WB: A431, HepG2, SP2/0 and H9c2 whole cell lysates.
General notes	<p>Reproducibility is key to advancing scientific discovery and accelerating scientists' next breakthrough.</p> <p>Abcam is leading the way with our range of recombinant antibodies, knockout-validated antibodies and knockout cell lines, all of which support improved reproducibility.</p> <p>We are also planning to innovate the way in which we present recommended applications and species on our product datasheets, so that only applications & species that have been tested in our own labs, our suppliers or by selected trusted collaborators are covered by our Abpromise™ guarantee.</p> <p>In preparation for this, we have started to update the applications & species that this product is Abpromise guaranteed for.</p> <p>We are also updating the applications & species that this product has been "predicted to work with," however this information is not covered by our Abpromise guarantee.</p> <p>Applications & species from publications and Abreviews that have not been tested in our own labs or in those of our suppliers are not covered by the Abpromise guarantee.</p> <p>Please check that this product meets your needs before purchasing. If you have any questions, special requirements or concerns, please send us an inquiry and/or contact our Support team ahead of purchase. Recommended alternatives for this product can be found below, as well as customer reviews and Q&As.</p>

Properties

Form	Liquid
-------------	--------

Storage instructions	Shipped at 4°C. Store at +4°C short term (1-2 weeks). Upon delivery aliquot. Store at -20°C long term. Avoid freeze / thaw cycle.
Storage buffer	pH: 7.30 Preservative: 0.01% Sodium azide Constituents: PBS, 30% Glycerol
Purity	Immunogen affinity purified
Clonality	Polyclonal
Isotype	IgG

Applications

Our [Abpromise guarantee](#) covers the use of **ab230629** in the following tested applications.

The application notes include recommended starting dilutions; optimal dilutions/concentrations should be determined by the end user.

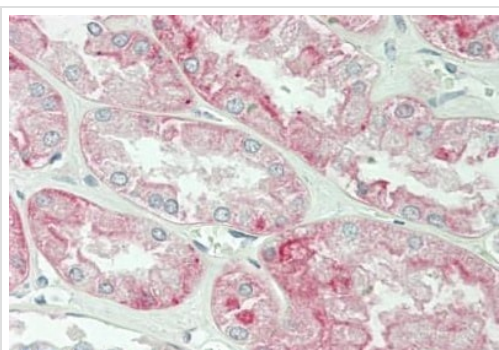
Application	Abreviews	Notes
WB		1/500 - 1/1000. Predicted molecular weight: 63 kDa.
IHC-P		1/100.

Target

Relevance SLC22A2 (solute carrier family 22 (organic cation transporter), member 2) is an organic cation transporter. Polyspecific organic cation transporters in the liver, kidney, intestine, and other organs are critical for elimination of many endogenous small organic cations as well as a wide array of drugs and environmental toxins. SLC22A2 is found primarily in the kidney, where it may mediate the first step in cation reabsorption. It plays important roles in the renal tubular secretion of cationic drugs.

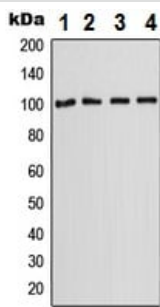
Cellular localization Plasma membrane

Images



Formalin-fixed, paraffin-embedded human kidney tissue stained for SLC22A2 using ab230629 at 1/100 dilution in immunohistochemical analysis.

Immunohistochemistry (Formalin/PFA-fixed paraffin-embedded sections) - Anti-SLC22A2 antibody - C-terminal (ab230629)



Western blot - Anti-SLC22A2 antibody - C-terminal (ab230629)

All lanes : Anti-SLC22A2 antibody - C-terminal (ab230629) at 1/500 dilution

Lane 1 : A431 (human epidermoid carcinoma cell line) whole cell lysate

Lane 2 : HepG2 (human liver hepatocellular carcinoma cell line) whole cell lysate

Lane 3 : SP2/0 whole cell lysate

Lane 4 : H9c2 (rat heart myoblast cell line) whole cell lysate

Predicted band size: 63 kDa

Please note: All products are "FOR RESEARCH USE ONLY. NOT FOR USE IN DIAGNOSTIC PROCEDURES"

Our Abpromise to you: Quality guaranteed and expert technical support

- Replacement or refund for products not performing as stated on the datasheet
- Valid for 12 months from date of delivery
- Response to your inquiry within 24 hours
- We provide support in Chinese, English, French, German, Japanese and Spanish
- Extensive multi-media technical resources to help you
- We investigate all quality concerns to ensure our products perform to the highest standards

If the product does not perform as described on this datasheet, we will offer a refund or replacement. For full details of the Abpromise, please visit <https://www.abcam.com/abpromise> or contact our technical team.

Terms and conditions

- Guarantee only valid for products bought direct from Abcam or one of our authorized distributors