

Product datasheet

Anti-SLC22A2 antibody [EPR11248] ab170871

Recombinant RabMAb

[3 References](#) [7 Images](#)

Overview

Product name	Anti-SLC22A2 antibody [EPR11248]
Description	Rabbit monoclonal [EPR11248] to SLC22A2
Host species	Rabbit
Specificity	Mouse and rat species are recommended based on WB results, we do not guarantee IHC-P for mouse and rat.
Tested applications	Suitable for: WB, IHC-P Unsuitable for: Flow Cyt, ICC or IP
Species reactivity	Reacts with: Mouse, Rat, Human
Immunogen	Synthetic peptide within Human SLC22A2 aa 100-200. The exact sequence is proprietary. Database link: O15244
Positive control	Human fetal kidney lysate, 293T, HepG2 and A431 lysates, Human kidney tissue and Human prostate tissue
General notes	<p>This product is a recombinant monoclonal antibody, which offers several advantages including:</p> <ul style="list-style-type: none"> - High batch-to-batch consistency and reproducibility - Improved sensitivity and specificity - Long-term security of supply - Animal-free production <p>For more information see here.</p> <p>Our RabMAb[®] technology is a patented hybridoma-based technology for making rabbit monoclonal antibodies. For details on our patents, please refer to RabMAb[®] patents.</p> <p>Reproducibility is key to advancing scientific discovery and accelerating scientists' next breakthrough.</p> <p>Abcam is leading the way with our range of recombinant antibodies, knockout-validated antibodies and knockout cell lines, all of which support improved reproducibility.</p> <p>We are also planning to innovate the way in which we present recommended applications and species on our product datasheets, so that only applications & species that have been tested in our own labs, our suppliers or by selected trusted collaborators are covered by our Abpromise[™] guarantee.</p> <p>In preparation for this, we have started to update the applications & species that this product is Abpromise guaranteed for.</p>

We are also updating the applications & species that this product has been “predicted to work with,” however this information is not covered by our Abpromise guarantee.

Applications & species from publications and Abreviews that have not been tested in our own labs or in those of our suppliers are not covered by the Abpromise guarantee.

Please check that this product meets your needs before purchasing. If you have any questions, special requirements or concerns, please send us an inquiry and/or contact our Support team ahead of purchase. Recommended alternatives for this product can be found below, as well as customer reviews and Q&As.

Properties

Form	Liquid
Storage instructions	Shipped at 4°C. Store at +4°C short term (1-2 weeks). Upon delivery aliquot. Store at -20°C long term. Avoid freeze / thaw cycle.
Storage buffer	pH: 7.2 Preservative: 0.01% Sodium azide Constituents: 9% PBS, 40% Glycerol (glycerin, glycerine), 0.05% BSA, 50% Tissue culture supernatant
Purity	Tissue culture supernatant
Clonality	Monoclonal
Clone number	EPR11248
Isotype	IgG

Applications

Our [Abpromise guarantee](#) covers the use of **ab170871** in the following tested applications.

The application notes include recommended starting dilutions; optimal dilutions/concentrations should be determined by the end user.

Application	Abreviews	Notes
WB		1/1000 - 1/5000. Predicted molecular weight: 63 kDa.
IHC-P		1/100 - 1/250. Perform heat mediated antigen retrieval with citrate buffer pH 6 before commencing with IHC staining protocol. Mouse and rat species are recommended based on WB results, we do not guarantee IHC-P for mouse and rat.

Application notes	Is unsuitable for Flow Cyt, ICC or IP.
--------------------------	--

Target

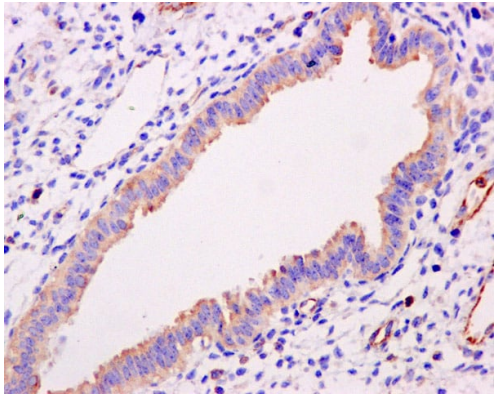
Relevance SLC22A2 (solute carrier family 22 (organic cation transporter), member 2) is an organic cation transporter. Polyspecific organic cation transporters in the liver, kidney, intestine, and other organs are critical for elimination of many endogenous small organic cations as well as a wide array of drugs and environmental toxins. SLC22A2 is found primarily in the kidney, where it may mediate the first step in cation reabsorption. It plays important roles in the renal tubular secretion

of cationic drugs.

Cellular localization

Plasma membrane

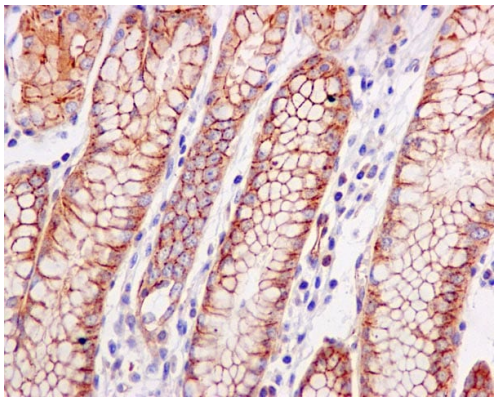
Images



Immunohistochemistry (Formalin/PFA-fixed paraffin-embedded sections) - Anti-SLC22A2 antibody [EPR11248] (ab170871)

ab170871 showing +ve staining in Human uterus tissue.

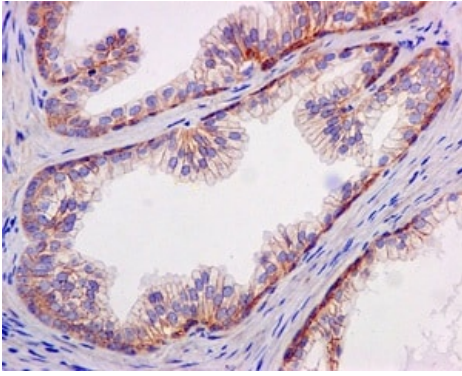
Perform heat mediated antigen retrieval with citrate buffer pH 6 before commencing with IHC staining protocol.



Immunohistochemistry (Formalin/PFA-fixed paraffin-embedded sections) - Anti-SLC22A2 antibody [EPR11248] (ab170871)

ab170871 showing +ve staining in Human normal stomach tissue.

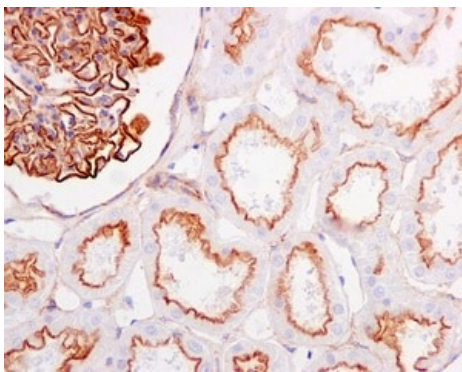
Perform heat mediated antigen retrieval with citrate buffer pH 6 before commencing with IHC staining protocol.



Immunohistochemistry (Formalin/PFA-fixed paraffin-embedded sections) - Anti-SLC22A2 antibody [EPR11248] (ab170871)

Immunohistochemical analysis of paraffin-embedded Human prostate tissue labeling SLC22A2 using ab170871 at a 1/100 dilution.

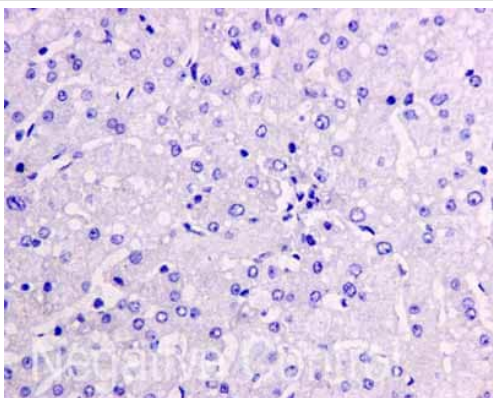
Perform heat mediated antigen retrieval with citrate buffer pH 6 before commencing with IHC staining protocol.



Immunohistochemistry (Formalin/PFA-fixed paraffin-embedded sections) - Anti-SLC22A2 antibody [EPR11248] (ab170871)

Immunohistochemical analysis of paraffin-embedded Human kidney tissue labeling SLC22A2 using ab170871 at a 1/100 dilution.

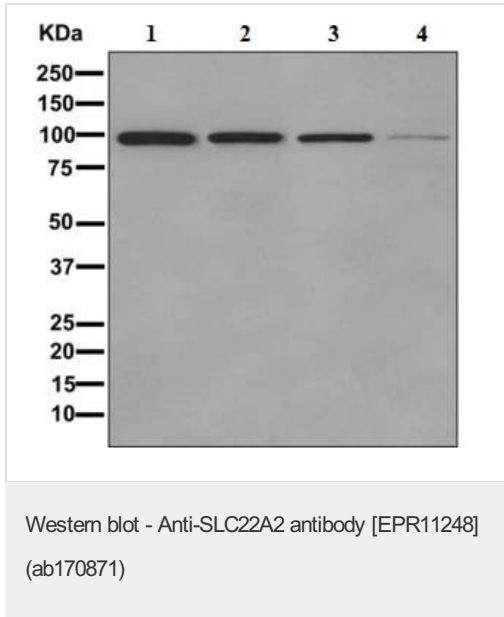
Perform heat mediated antigen retrieval with citrate buffer pH 6 before commencing with IHC staining protocol.



Immunohistochemistry (Formalin/PFA-fixed paraffin-embedded sections) - Anti-SLC22A2 antibody [EPR11248] (ab170871)

ab170871 showing -ve staining in Human normal liver tissue.

Perform heat mediated antigen retrieval with citrate buffer pH 6 before commencing with IHC staining protocol.



All lanes : Anti-SLC22A2 antibody [EPR11248] (ab170871) at 1/1000 dilution

Lane 1 : Human fetal kidney lysate

Lane 2 : 293T lysate

Lane 3 : HepG2 lysate

Lane 4 : A431 lysate

Lysates/proteins at 10 µg per lane.

Secondary

All lanes : HRP labeled goat anti-rabbit IgG at 1/2000 dilution

Predicted band size: 63 kDa

Why choose a recombinant antibody?

Research with confidence
Consistent and reproducible results

Long-term and scalable supply
Recombinant technology

Success from the first experiment
Confirmed specificity

Ethical standards compliant
Animal-free production

Anti-SLC22A2 antibody [EPR11248] (ab170871)

Please note: All products are "FOR RESEARCH USE ONLY. NOT FOR USE IN DIAGNOSTIC PROCEDURES"

Our Abpromise to you: Quality guaranteed and expert technical support

- Replacement or refund for products not performing as stated on the datasheet
- Valid for 12 months from date of delivery
- Response to your inquiry within 24 hours
- We provide support in Chinese, English, French, German, Japanese and Spanish
- Extensive multi-media technical resources to help you
- We investigate all quality concerns to ensure our products perform to the highest standards

If the product does not perform as described on this datasheet, we will offer a refund or replacement. For full details of the Abpromise, please visit <https://www.abcam.com/abpromise> or contact our technical team.

Terms and conditions

- Guarantee only valid for products bought direct from Abcam or one of our authorized distributors