




Product datasheet

Anti-SLC22A7/OAT2 antibody - C-terminal ab191018

★★★★★ 1 Abreviews 1 References 1 Image

Overview

Product name	Anti-SLC22A7/OAT2 antibody - C-terminal
Description	Rabbit polyclonal to SLC22A7/OAT2 - C-terminal
Host species	Rabbit
Specificity	No cross reactivity with other proteins.
Tested applications	Suitable for: WB
Species reactivity	Reacts with: Rat, Human Predicted to work with: Mouse 
Immunogen	Synthetic peptide corresponding to Human SLC22A7/OAT2 aa 514-530 (C terminal). Sequence: ETRQAQLPETIQDVERK Database link: Q9Y694  Run BLAST with  Run BLAST with
Positive control	Rat liver tissue lysate. Human placenta tissue, 293T and SMMC cell lysate.
General notes	This product was previously labelled as SLC22A7

Properties

Form	Liquid
Storage instructions	Shipped at 4°C. Store at +4°C short term (1-2 weeks). Upon delivery aliquot. Store at -20°C long term. Avoid freeze / thaw cycle.
Storage buffer	Preservatives: 0.025% Thimerosal (merthiolate), 0.025% Sodium azide Constituents: 2.5% BSA, 0.45% Sodium chloride, 0.1% Dibasic monohydrogen sodium phosphate
Purity	Immunogen affinity purified
Clonality	Polyclonal
Isotype	IgG

Applications

Our [Abpromise guarantee](#) covers the use of **ab191018** in the following tested applications.

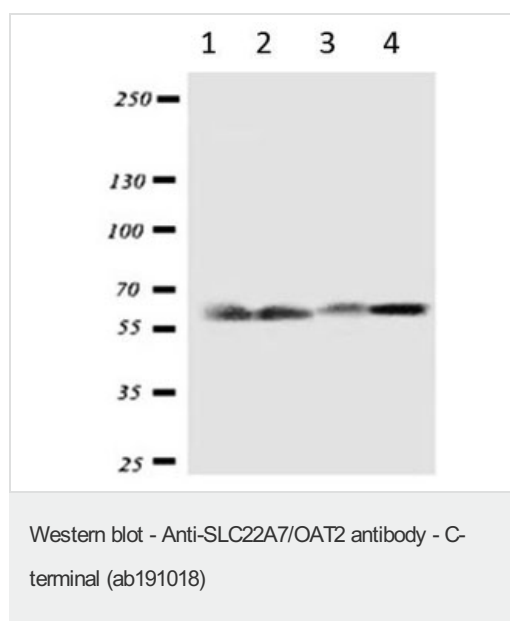
The application notes include recommended starting dilutions; optimal dilutions/concentrations should be determined by the end user.

Application	Abreviews	Notes
WB	★★★★☆	Use a concentration of 0.1 - 0.5 µg/ml.

Target

Function	Mediates sodium-independent multispecific organic anion transport. Transport of prostaglandin E2, prostaglandin F2, tetracycline, bumetanide, estrone sulfate, glutarate, dehydroepiandrosterone sulfate, allopurinol, 5-fluorouracil, paclitaxel, L-ascorbic acid, salicylate, ethotrexate, and alpha-ketoglutarate.
Tissue specificity	Expressed in liver and kidney.
Sequence similarities	Belongs to the major facilitator (TC 2.A.1) superfamily. Organic cation transporter (TC 2.A.1.19) family.
Cellular localization	Basolateral cell membrane. Apical side of the renal tubule.

Images



All lanes : Anti-SLC22A7/OAT2 antibody - C-terminal (ab191018) at 0.5 µg/ml

- Lane 1 :** Rat Liver Tissue Lysate
- Lane 2 :** Human Placenta Tissue Lysate
- Lane 3 :** 293T Cell Lysate
- Lane 4 :** SMMC Cell Lysate

Please note: All products are "FOR RESEARCH USE ONLY. NOT FOR USE IN DIAGNOSTIC PROCEDURES"

Our Abpromise to you: Quality guaranteed and expert technical support

- Replacement or refund for products not performing as stated on the datasheet
- Valid for 12 months from date of delivery
- Response to your inquiry within 24 hours

- We provide support in Chinese, English, French, German, Japanese and Spanish
- Extensive multi-media technical resources to help you
- We investigate all quality concerns to ensure our products perform to the highest standards

If the product does not perform as described on this datasheet, we will offer a refund or replacement. For full details of the Abpromise, please visit <https://www.abcam.com/abpromise> or contact our technical team.

Terms and conditions

- Guarantee only valid for products bought direct from Abcam or one of our authorized distributors